

4

3

2

1

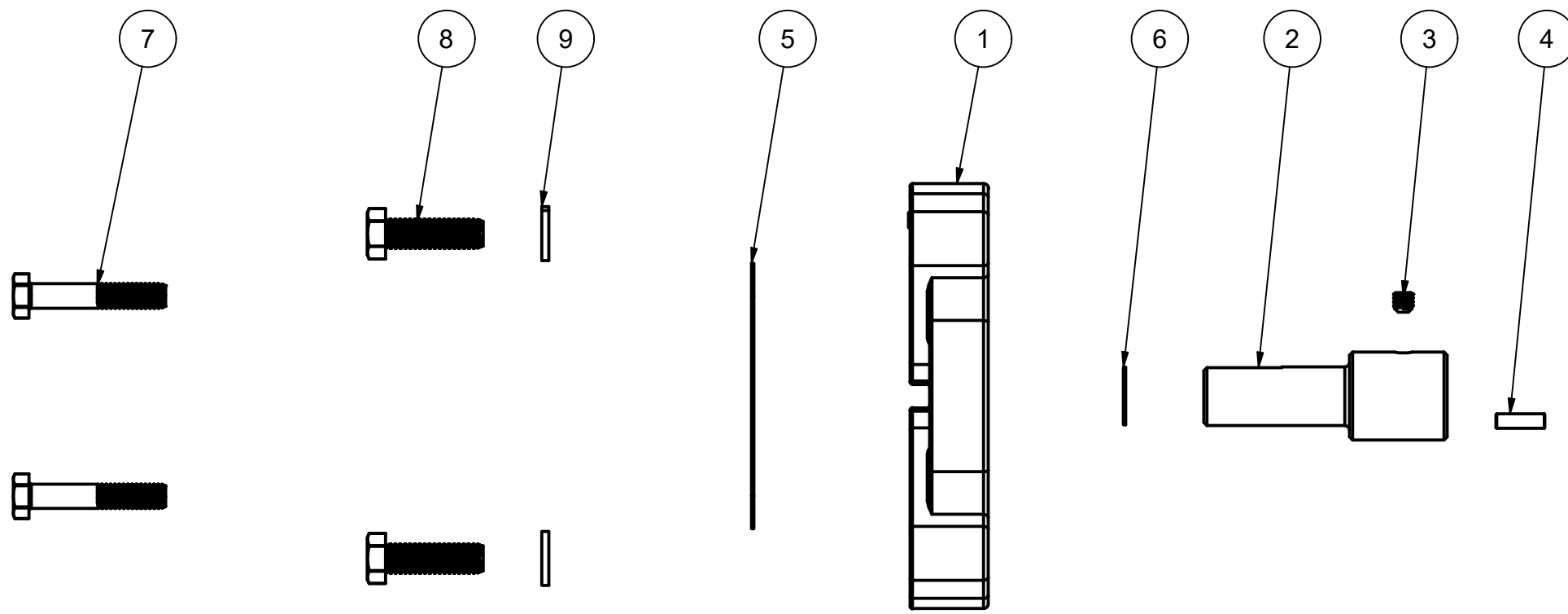
PARTS LIST			
ITEM	QTY	PART NUMBER	DESCRIPTION
1	1	12046	56C ADAPTER PLATE
2	1	12052	56C ADAPTER SHAFT
3	1	12053	1/4-20 1/4" SOCKET SET SCREW
4	1	12902A	3/16" SQ. X 5/8" KEY
5	1	15751	REAR BRACKET SHIM
6	1	15752	IMPELLER SHIM
7	4	17029	5/16-18 X 1.75" HHCS
8	4	17704	3/8-16 X 1 1/4" HHCS
9	4	V20018	3/8" LOCKWASHER

B

B

A

A



4

3

2

1

THIS DRAWING AND ALL INFORMATION CONTAINED THEREON ARE THE EXCLUSIVE PROPERTY OF BANJO CORPORATION.

UNLESS SPECIFICALLY NOTED, THIS DRAWING AND ITEMS SHOWN ON THIS DRAWING ARE SUBJECT TO CHANGE AT ANY TIME.



BANJO CORPORATION
 150 BANJO DRIVE, CRAWFORDSVILLE, IN 47933
 WEB SITE: WWW.BANJOCORP.COM
 E-MAIL: BANJOSALES@IDEXCORP.COM

DESCRIPTION
56C ADAPTER KIT FOR POLY PUMP

PART NUMBER
12756