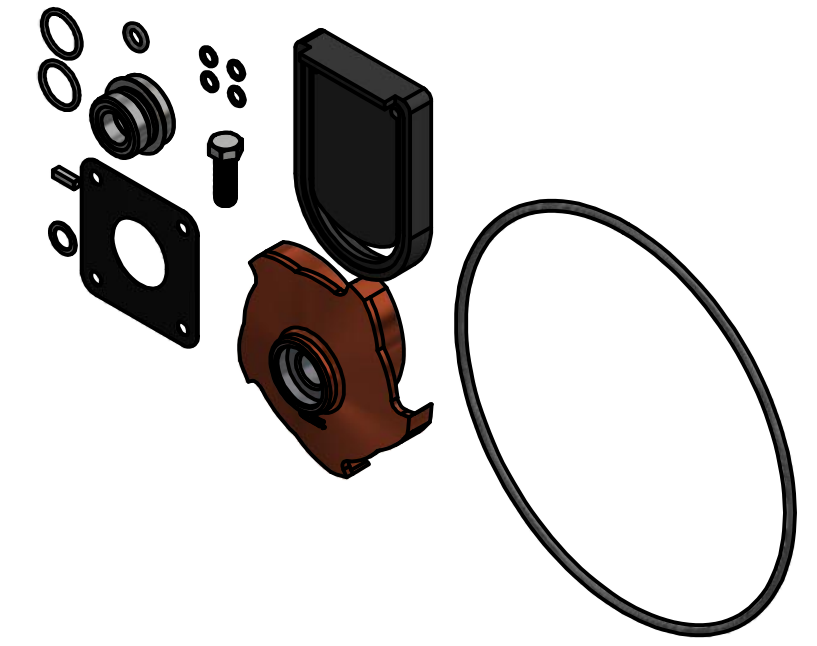
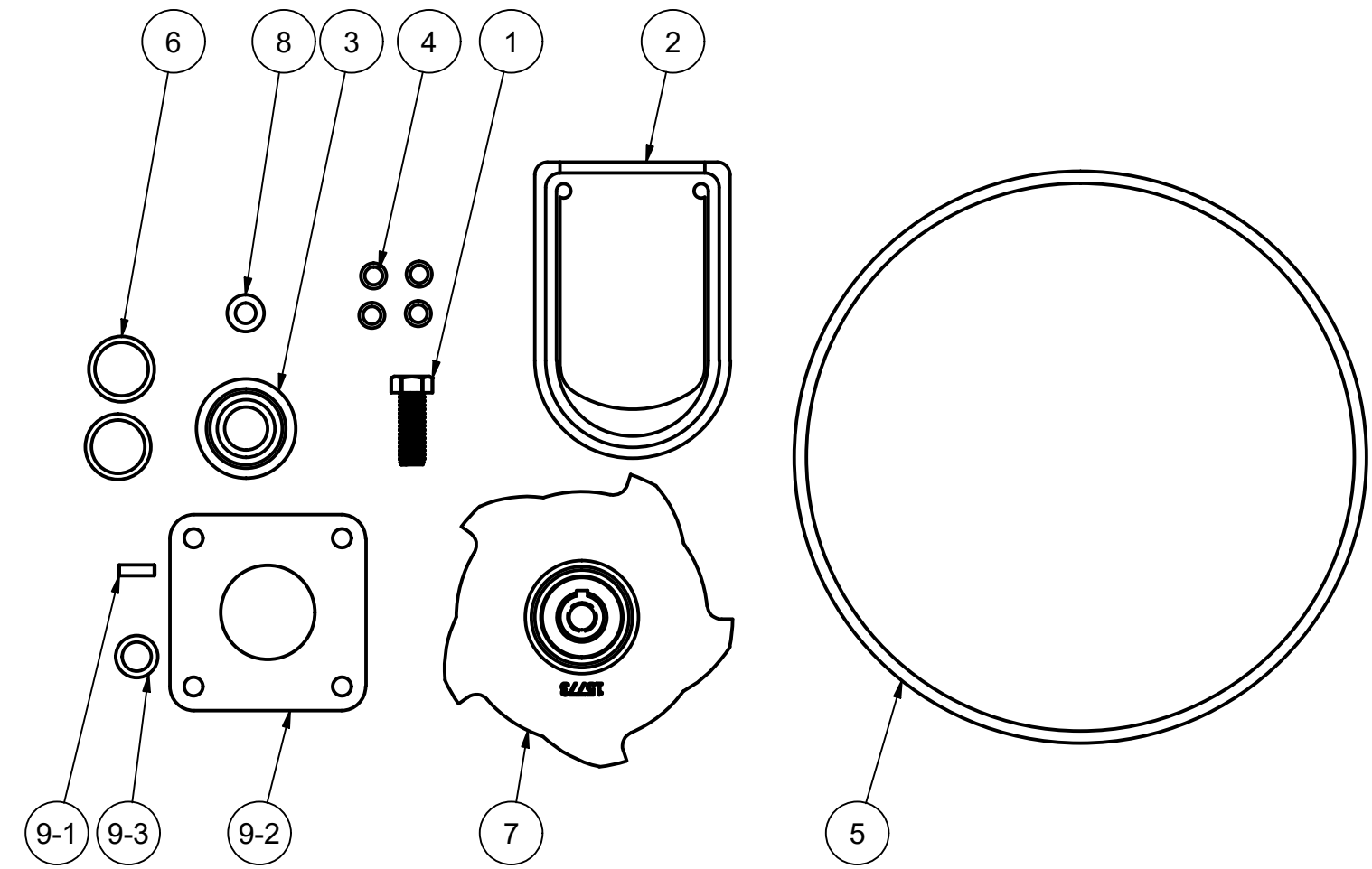


PARTS LIST			
ITEM	QTY	PART NUMBER	DESCRIPTION
1	1	12099	7/16-14 X 1 1/4" HHCS
2	1	12705	PUMP CHECKVALVE, EPDM
3	1	12713V	MECHANICAL SEAL ASSY
4	4	12717	AS568A -011 O-RING, EPDM
5	1	12719A	AS568A -375 O-RING, EPDM, BLACK
6	2	13778	AS568A -119 O-RING, EPDM, BLACK
7	1	15773	5 VANE IMPELLER, TRIMMED
8	1	A204	AS568A -204 O-RING, EPDM, BLACK
9	1	RK1001	O-RING KIT
9-1	1	12902A	3/16" SQ. X 5/8" KEY
9-2	1	15751	REAR BRACKET SHIM
9-3	1	15752	IMPELLER SHIM



THIS DRAWING AND ALL INFORMATION CONTAINED THEREON ARE THE EXCLUSIVE PROPERTY OF BANJO CORPORATION.

UNLESS SPECIFICALLY NOTED, THIS DRAWING AND ITEMS SHOWN ON THIS DRAWING ARE SUBJECT TO CHANGE AT ANY TIME.


BANJO CORPORATION
 150 BANJO DRIVE, CRAWFORDSVILLE, IN 47933
 WEB SITE: WWW.BANJOCORP.COM
 E-MAIL: BANJOSALES@IDEXCORP.COM

DESCRIPTION
222 SERIES REPAIR KIT

PART NUMBER
15000