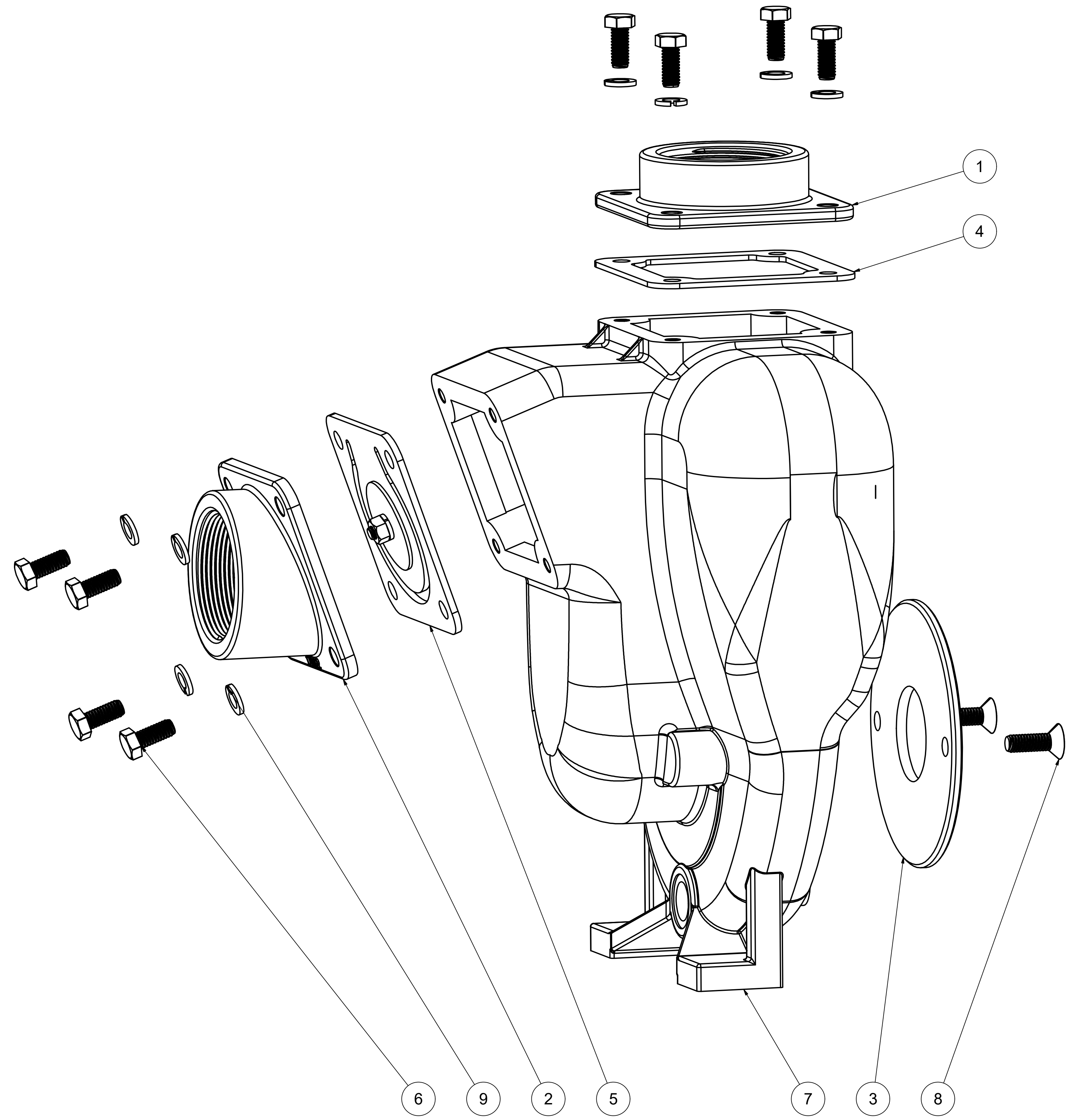



Parts List			
ITEM	QTY	PART NUMBER	DESCRIPTION
1	1	17000	2" OUTLET FLANGE
2	1	17002	2" INLET FLANGE
3	1	17011	WEAR PLATE
4	1	17013	OUTLET FLANGE GASKET
5	1	17016	CI PUMP CHECK VALVE ASSY
6	8	17019	5/16-18 X 3/4" HHCS
7	1	17026	2" PUMP HOUSING
8	2	17130	5/16-18 X 1" FHSCS
9	8	V10118	5/16" LOCKWASHER



TOLERANCE UNLESS OTHERWISE SPECIFIED DECIMALS 0.00 = +/- 0.010 DECIMALS 0.000 = +/- 0.005 FRACTIONS 1/8" = +/- 1/32 ANGLES = +/- 1			
BREAK ALL SHOWN CORNERS W/ 1/32 R UNLESS OTHERWISE SPECIFIED			
DRAWN	MJC	10/6/2008	BANJO CORPORATION 150 BANJO DRIVE, CRAWFORDSVILLE, IN 47933
CHECKED			
QA			2" CI PUMP HOUSING SUB-ASSY
MFG			
APPROVED			SIZE D DWG TYPE ENG DWG NO 17226 REV 000
SCALE			SHEET 1 OF 2