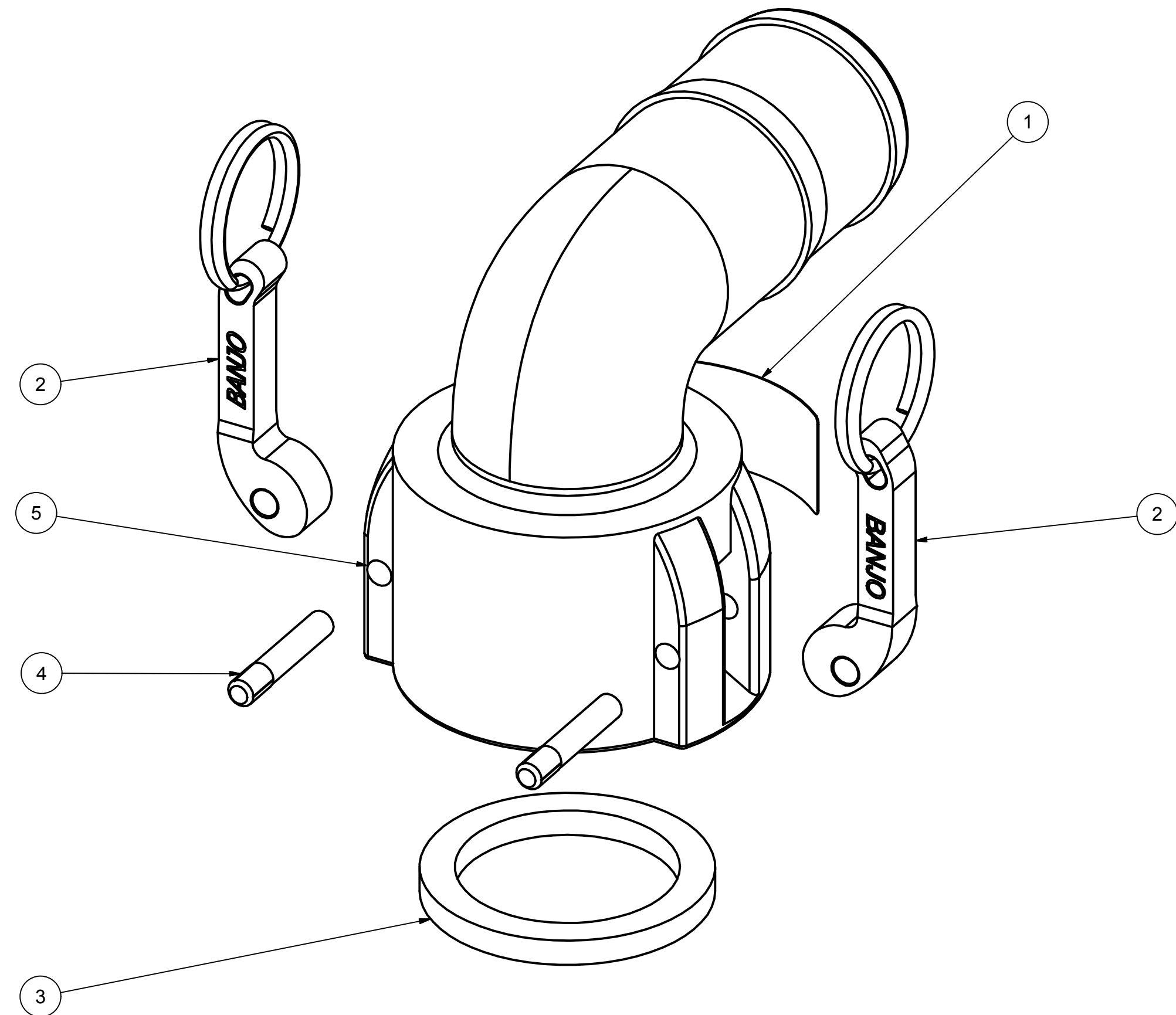
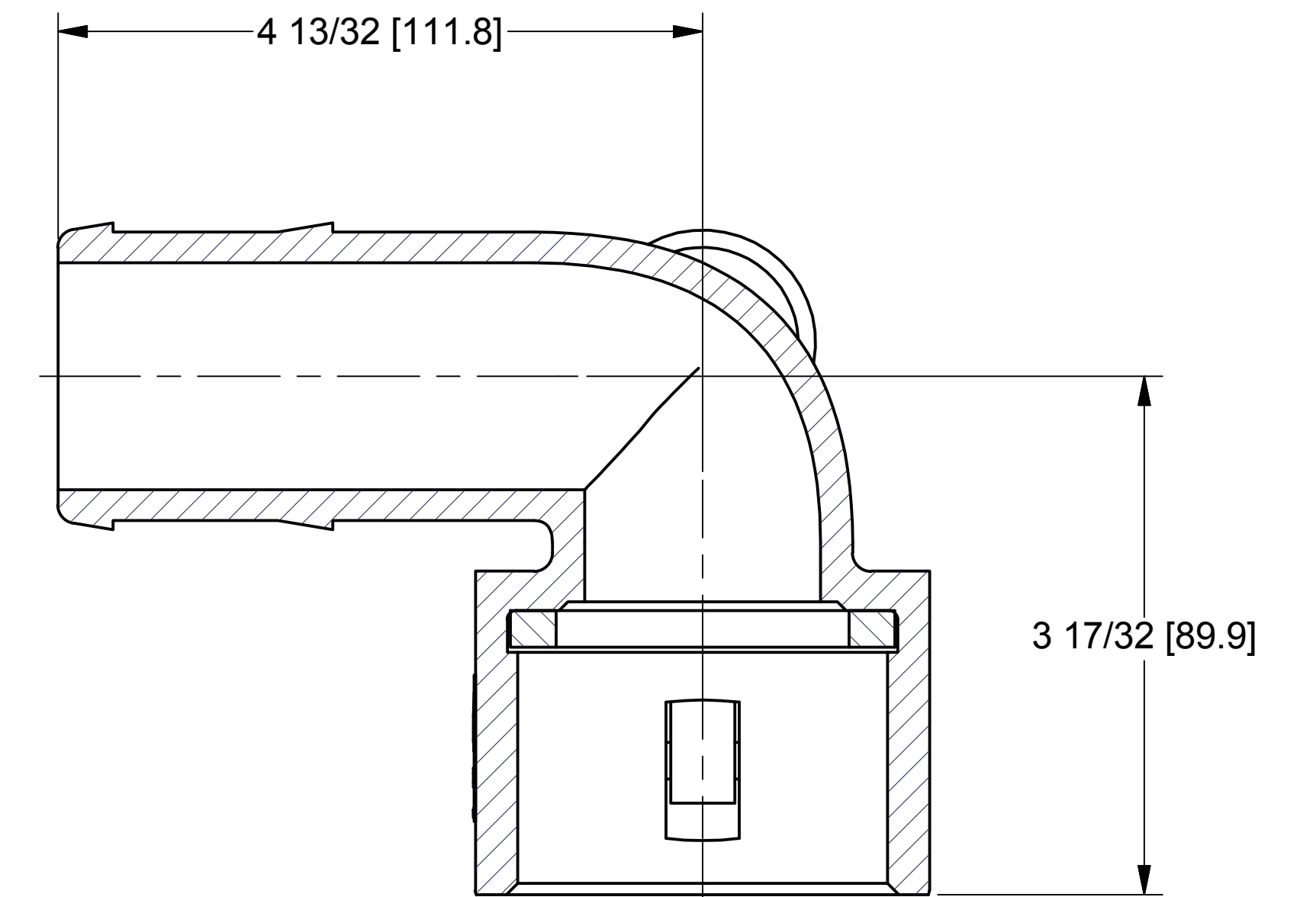
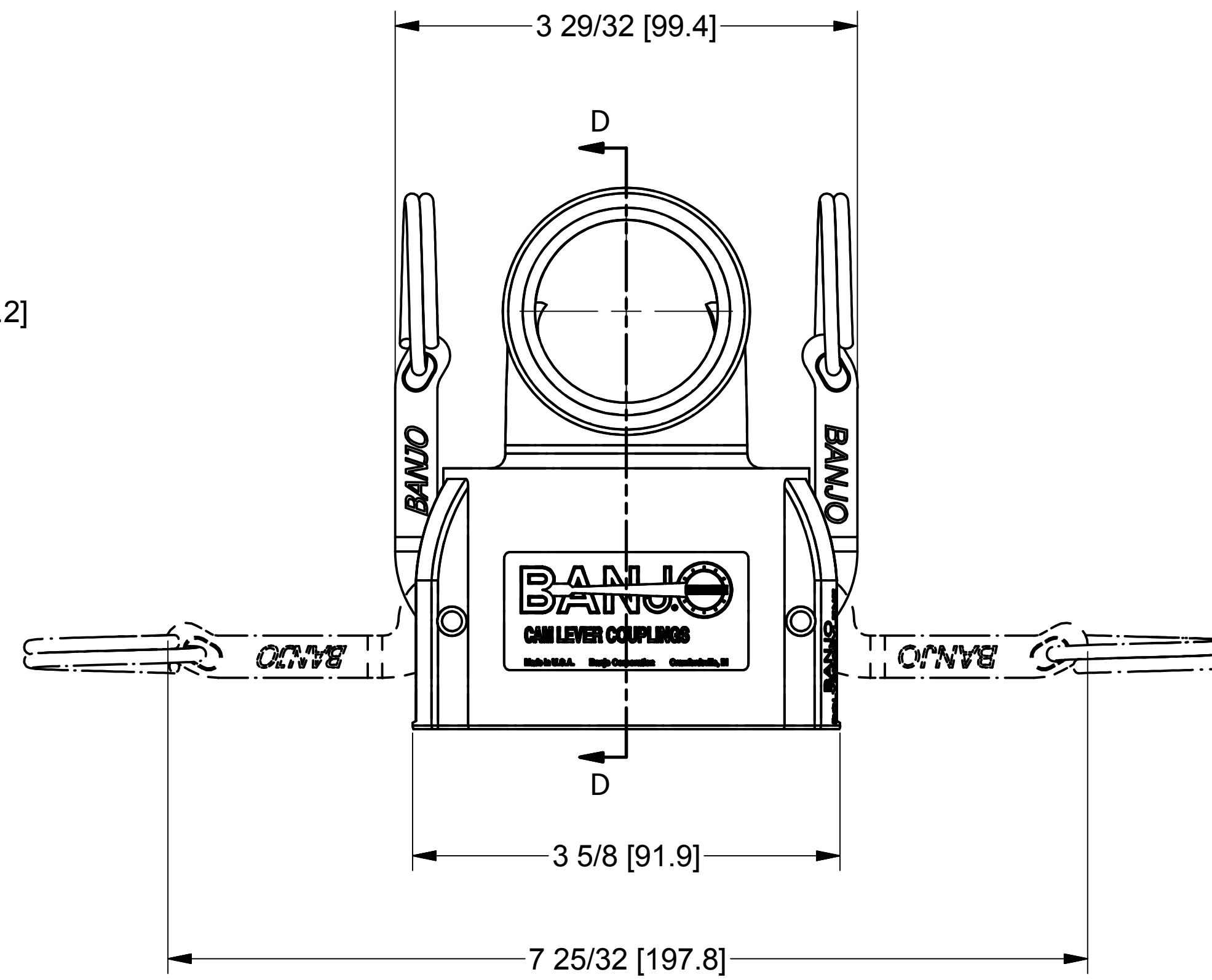
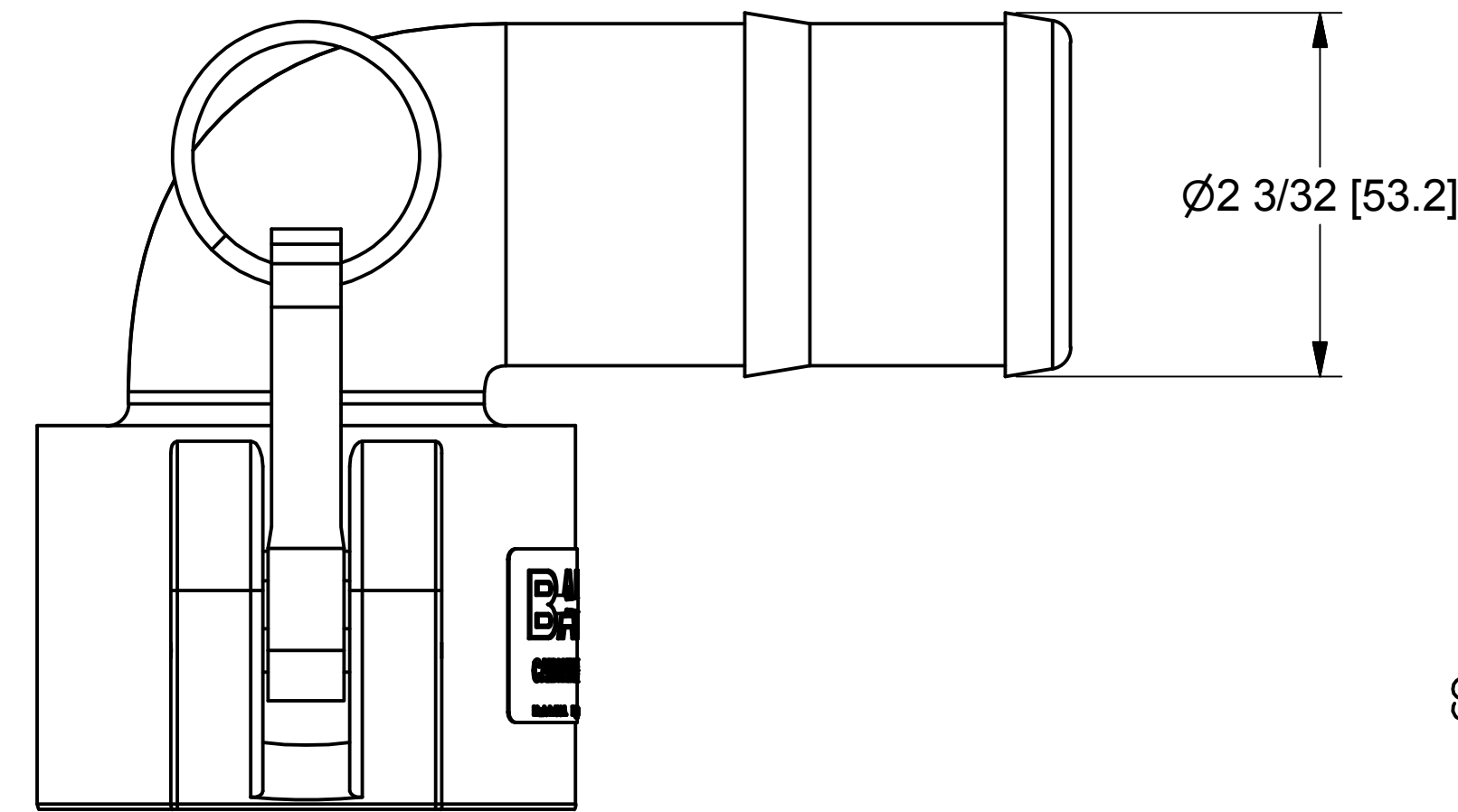


Parts List				
ITEM	QTY	PART NUMBER	DESCRIPTION	
1	1	150(200)D	CAM LEVER COUPLING DECAL	
2	2	150(200)K	1 1/2" & 2" CAM ARM	
3	1	200G	2" Coupling Gasket	
4	2	200P	CAM ARM PIN	
5	1	200XC-90	2" Female Coupling X 2" HB, 90°, Molded	



BANJO CORPORATION  
150 BANJO DRIVE, CRAWFORDSVILLE, IN 47933  
WEB SITE: WWW.BANJOCORP.COM  
E-MAIL: SALES1@BANJOCORP.COM

THIS DRAWING AND ALL INFORMATION CONTAINED THEREON ARE THE EXCLUSIVE PROPERTY OF BANJO CORPORATION.  
UNLESS SPECIFICALLY NOTED, THIS DRAWING AND ITEMS SHOWN ON THIS DRAWING ARE SUBJECT TO CHANGE AT ANY TIME.

DESCRIPTION  
2" Female Coupling X 2" HB, 90°  
PART NUMBER  
200C90