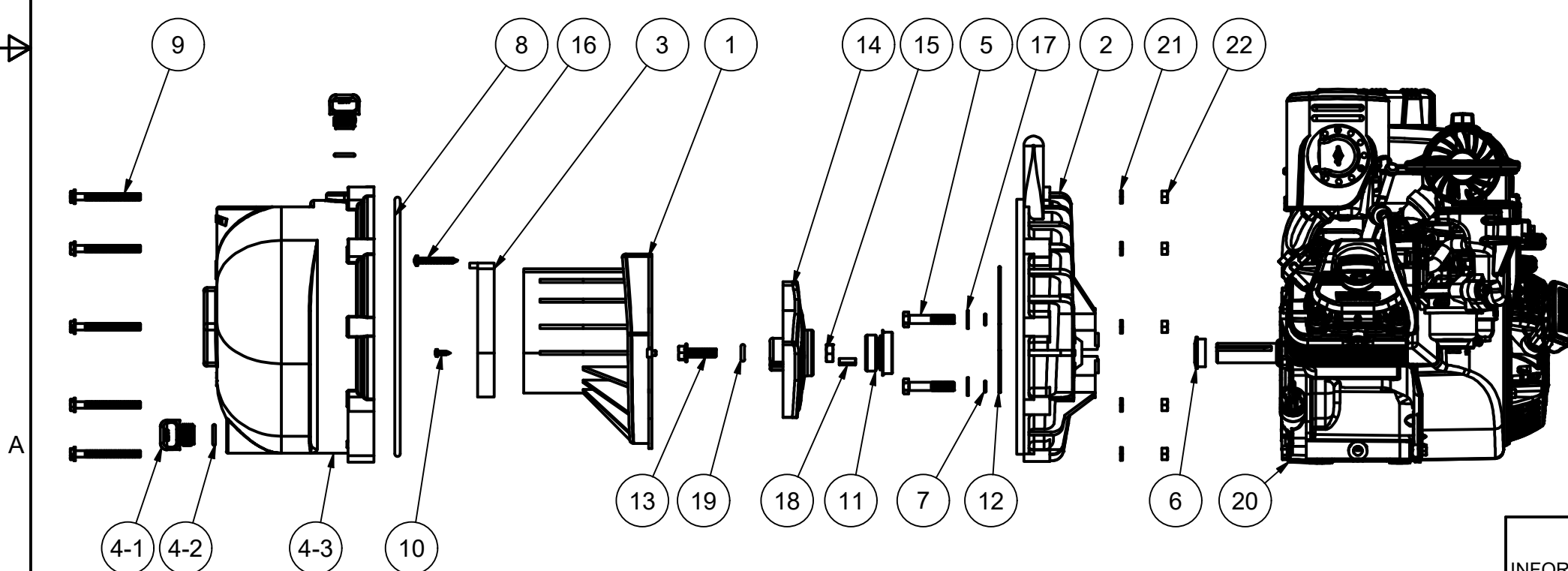



Parts List			
ITEM	QTY	PART NUMBER	DESCRIPTION
1	1	12702A	2" POLY PUMP VOLUTE
2	1	12703A	POLY PUMP REAR BRACKET
3	1	12705	PUMP CHECKVALVE, EPDM
4	1	12712A	2" POLY PUMP BODY
4-1	2	12777	1/2" DRAIN PLUG
4-2	2	UV15163	AS568A -114 O-RING, EPDM, BLACK
4-3	1	X12712A	2" POLY PUMP BODY
5	4	12715A	5/16-24 X 1 3/4" HHCS WITH TORQ-PATCH
6	1	12716	PUMP SLINGER
7	4	12717	AS568A -011 O-RING, EPDM
8	1	12719A	AS568A -375 O-RING, EPDM, BLACK
9	10	12720	1/4-20 X 2 1/2" SL IND HEX WASHER HEAD SCREW
10	2	12725	#6 X 1/2" PPH SMS
11	1	12733	MECHANICAL SEAL ASSY, BULK PACKED
12	1	12754	O'RING SEGMENT
13	1	12765A	5/16-24 X 1 1/8" HFS
14	1	12772	POLY 5 VANE IMPELLER
15	1	12775A	7/16-14 HEX NUT
16	1	12900	#10 X 1 1/2" PPH SMS
17	4	12901	5/16" FLAT WASHER
18	1	12902A	3/16" SQ. X 5/8" KEY
19	1	A204	AS568A -204 O-RING, EPDM, BLACK
20	1	E5VAN	VANGUARD 160/5HP (10V3)
21	10	V07018	1/4" LOCKWASHER
22	10	V07019	1/4"-20 S.S. HEX NUT



THIS DRAWING AND ALL INFORMATION CONTAINED THEREON ARE THE EXCLUSIVE PROPERTY OF BANJO CORPORATION.

UNLESS SPECIFICALLY NOTED, THIS DRAWING AND ITEMS SHOWN ON THIS DRAWING ARE SUBJECT TO CHANGE AT ANY TIME.



BANJO CORPORATION

150 BANJO DRIVE, CRAWFORDSVILLE, IN 47933
 WEB SITE: WWW.BANJOCORP.COM
 E-MAIL: BANJOSALES@IDEXCORP.COM

DESCRIPTION	2" POLY PUMP; VANGUARD 160/5HP (10V3)
PART NUMBER	200P5VAN