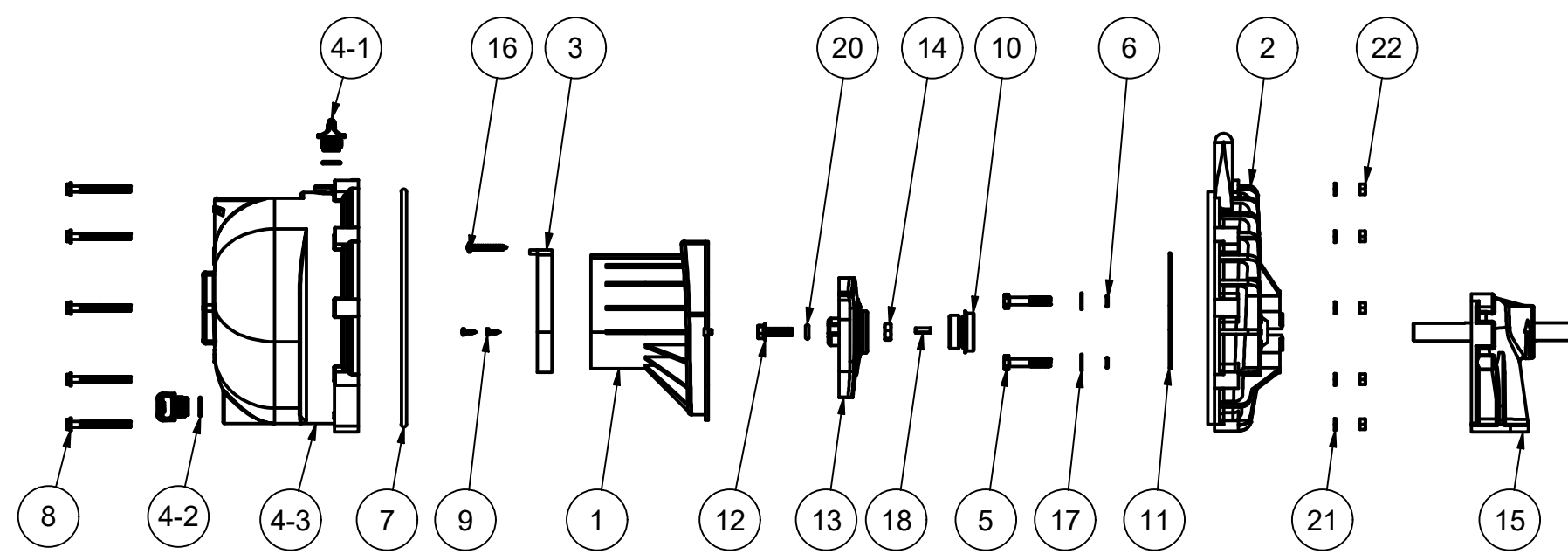


PARTS LIST			
ITEM	QTY	PART NUMBER	DESCRIPTION
1	1	12702A	2" POLY PUMP VOLUTE
2	1	12703A	POLY PUMP REAR BRACKET
3	1	12705	PUMP CHECKVALVE, EPDM
4	1	12712AP	2" POLY PUMP BODY
4-1	2	12777	1/2" DRAIN PLUG
4-2	2	UV15163	#114 O'RING, EPDM
4-3	1	X12712A	2" POLY PUMP BODY
5	4	12715A	5/16-24 X 1 3/4" HHCS WITH TORQ-PATCH
6	4	12717	AS568A -011 O-RING, EPDM
7	1	12719A	AS568A -375 O-RING, EPDM, BLACK
8	10	12720	1/4-20 X 2 1/2" SL IND HWHS
9	2	12725	#6 X 1/2" PPH SMS
10	1	12733	MECHANICAL SEAL ASSY
11	1	12754	O-RING SEGMENT
12	1	12765A	5/16-24 X 1 1/8" HFS
13	1	12771A	IMPELLER
14	1	12775A	7/16-14 HEX NUT
15	1	12882A	BEARING PEDESTAL
16	1	12900	#10 X 1 1/2" PPH SMS
17	4	12901	5/16" FLAT WASHER
18	1	12902A	3/16" SQ. X 5/8" KEY
19	1	12910	DECAL (N/S)
20	1	A204	AS568A -204 O-RING, EPDM, BLACK
21	10	V07018	1/4" LOCKWASHER
22	10	V07019	1/4-20 HEX NUT



THIS DRAWING AND ALL INFORMATION CONTAINED THEREON ARE THE EXCLUSIVE PROPERTY OF BANJO CORPORATION.

UNLESS SPECIFICALLY NOTED, THIS DRAWING AND ITEMS SHOWN ON THIS DRAWING ARE SUBJECT TO CHANGE AT ANY TIME.



BANJO CORPORATION

150 BANJO DRIVE, CRAWFORDSVILLE, IN 47933
 WEB SITE: WWW.BANJOCORP.COM
 E-MAIL: BANJOSALES@IDEXCORP.COM

DESCRIPTION	2" PEDESTAL PUMP W/BEARING PED
PART NUMBER	200PB