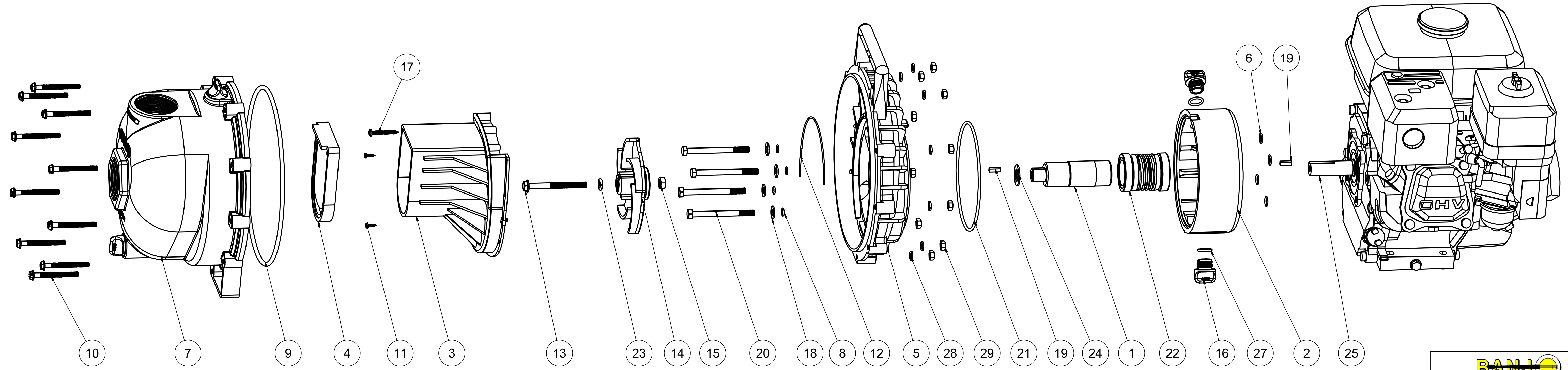


Parts List			
ITEM	QTY	PART NUMBER	DESCRIPTION
1	1	12155	ADAPTER SHAFT
2	1	12202W	2" POLY RESERVOIR
3	1	12702A	2" POLY PUMP VOLUTE
4	1	12705	PUMP CHECKVALVE, EPDM
5	1	12707W	2" W.S. REAR BRACKET
6	4	12709	#13 O-RING, EPDM
7	1	12712AP	2" POLY PUMP BODY
8	4	12717	#11 O'RING, EPDM
9	1	12719A	#375 O'RING, EPDM
10	10	12720	1/4-20 X 2 1/2" SL IND HWHS
11	2	12725	#6 X 1/2" PPH SMS
12	1	12754	O'RING SEGMENT
13	1	12766	5/16-24 X 3 1/4" HFS
14	1	12772	IMPELLER
15	1	12775A	7/16-14 HEX NUT
16	2	12777	1/2" DRAIN PLUG
17	1	12900	#10 X 1 1/2" PPH SMS
18	4	12901	5/16" FLAT WASHER
19	2	12902A	3/16" SQ. X 5/8" KEY
20	4	13034	5/16-24 X 3 1/2" HHCS
21	1	13719	#256 O'RING, EPDM
22	1	15035E	MECH. SEAL ASSY, EPDM
23	1	A204	#204 O'RING, EPDM
24	1	CV10175	GASKET
25	1	E5H	5.5 HP HONDA
26	1	KK-57	WET SEA; WARNING TAG (N/S)
27	2	UV15163	#114 O'RING, EPDM
28	10	V07018	1/4" LOCKWASHER
29	10	V07019	1/4-20 HEX NUT



THIS DRAWING AND ALL INFORMATION CONTAINED THEREON ARE THE EXCLUSIVE PROPERTY OF BANJO CORPORATION.

UNLESS SPECIFICALLY NOTED, THIS DRAWING AND ITEMS SHOWN ON THIS DRAWING ARE SUBJECT TO CHANGE AT ANY TIME.

BANJO CORPORATION
 150 BANJO DRIVE, CRAWFORDSVILLE, IN 47933
 WEB SITE: WWW.BANJOCORP.COM
 E-MAIL: SALES1@BANJOCORP.COM

DESCRIPTION
 2" POLY WET SEAL PUMP
 PART NUMBER
 200PH5W