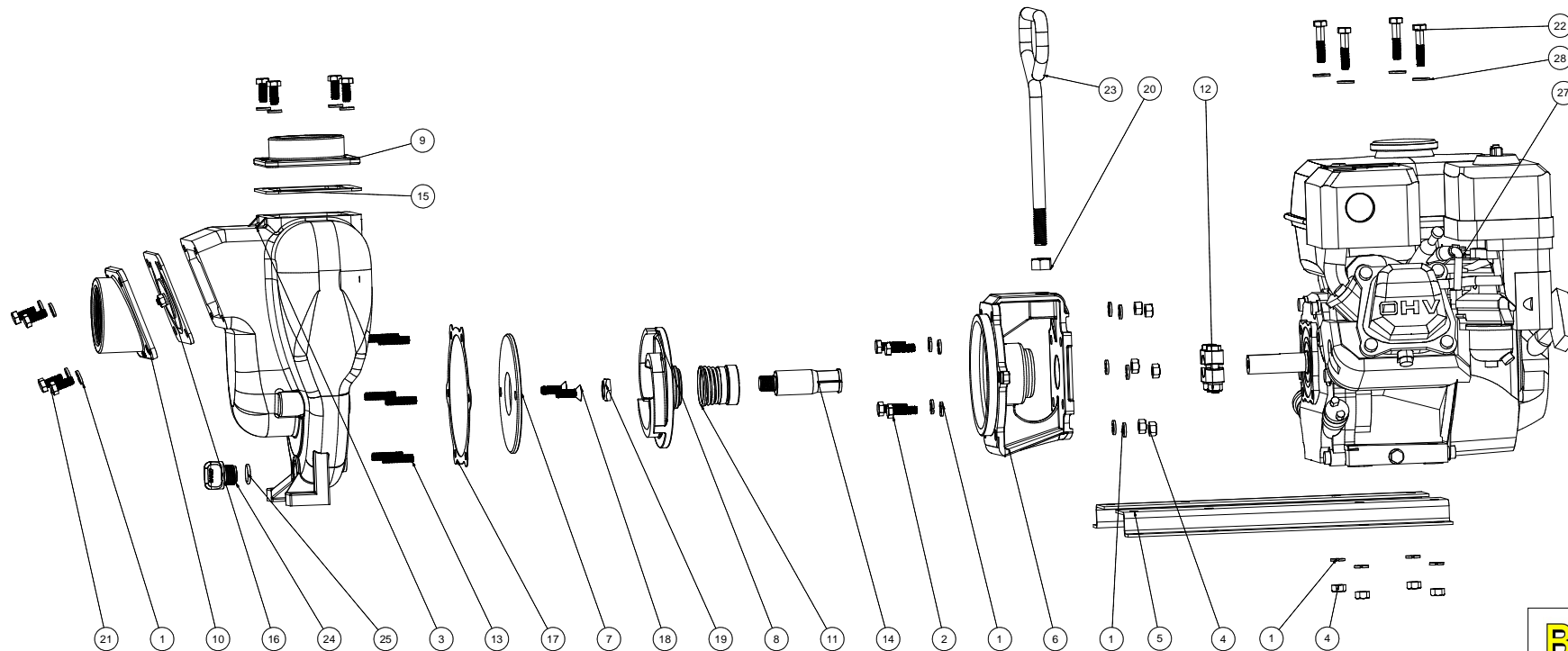


Parts List			
ITEM	QTY	PART NUMBER	DESCRIPTION
1	22	V10118	5/16" LOCKWASHER
2	4	17040	5/16-24 X 1" HHCS
3	1	17026	2" PUMP HOUSING
4	10	V10119	5/16" HEX NUT
5	1	17033	Z-RAIL (PAIR)
6	1	17004	GAS ENGINE ADAPTER
7	1	17011	WEAR PLATE
8	1	17008	PUMP IMPELLER
9	1	17000	2" OUTLET FLANGE
10	1	17002	2" INLET FLANGE
11	1	17135	MECH. SEAL ASSY
12	1	17123	CI PUMP KEYS CLAMP
13	6	17042	5/16-18 X 1 1/4" STUD
14	1	17006	ADAPTER SHAFT
15	1	17014	OUTLET FLANGE GASKET, FKM
16	1	17017	CI PUMP CHECK VALVE ASSY
17	1	17018	PUMP ADAPTER GASKET
18	2	17130	5/16-18 X 1" FHSCS
19	1	17009B	5/8-18 IMPELLER NUT
20	1	17010	1/2-13 HEX NUT
21	8	17019	5/16-18 X 3/4" HHCS
22	4	17034	5/16-18 X 1-1/2" HHCS
23	1	15022	2" PUMP HANDLE
24	1	12777	1/2" DRAIN PLUG
25	1	UV15163V	2-114 ORING
26	1	12910	PUMP DECAL (N/S)
27	1	E5H	5.5 HP HONDA
28	4	12901	5/16" FLAT WASHER



THIS DRAWING AND ALL INFORMATION CONTAINED THEREON ARE THE EXCLUSIVE PROPERTY OF BANJO CORPORATION.
UNLESS SPECIFICALLY NOTED, THIS DRAWING AND ITEMS SHOWN ON THIS DRAWING ARE SUBJECT TO CHANGE AT ANY TIME.

BANJO CORPORATION
 150 BANJO DRIVE, CRAWFORDSVILLE, IN 47933
 WEB SITE: WWW.BANJOCORP.COM
 E-MAIL: SALES1@BANJOCORP.COM

BANJO CORPORATION
 DESCRIPTION:
 2" CI PUMP W/ 5 HP HONDA
 PART NUMBER: 200PIH5V