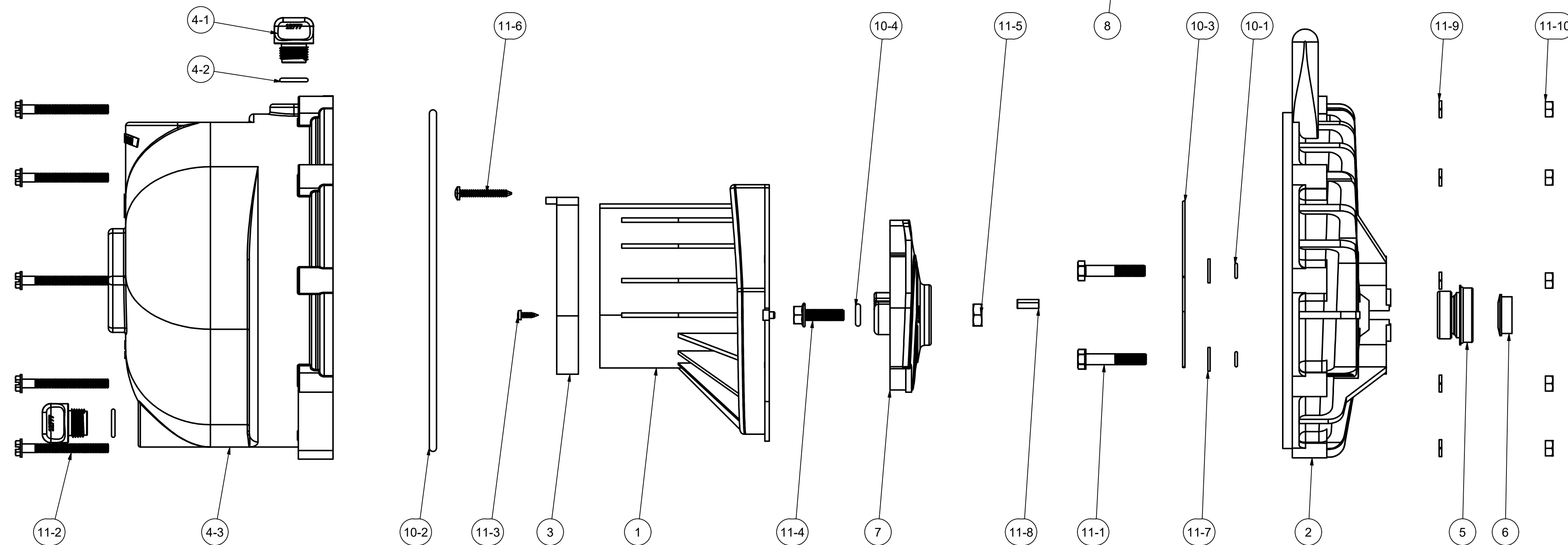


NOTE:
 BOTH 12771A & 12772 ARE INCLUDED.
 CUSTOMER MAY CHOOSE WHICH IMPELLER IS BEST TO USE.

PARTS LIST			
ITEM	QTY	PART NUMBER	DESCRIPTION
1	1	12702A	2" POLY PUMP VOLUTE
2	1	12703A	POLY PUMP REAR BRACKET
3	1	12705V	PUMP CHECKVALVE, FKM
4	1	12712AV	NEW 2" POLY PUMP BODY-FKM
4-1	2	12777	1/2" DRAIN PLUG
4-2	2	UV15163V	AS568A -114 O-RING, FKM, BROWN
4-3	1	X12712A	2" POLY PUMP BODY
5	1	12713V	MECHANICAL SEAL ASSY, IND. BOXED
6	1	12716	PUMP SLINGER
7	1	12771A	POLY 3 VANE IMPELLER
8	1	12772	POLY 5 VANE IMPELLER
9	1	12910	DECAL (N/S)
10	1	PUMPKIT002	FKM O-RING KIT FOR POLY PUMP
10-1	4	12717V	AS568A -011 O-RING, FKM, BROWN
10-2	1	12719AV	AS568A -375 O-RING, FKM, BROWN
10-3	1	12754V	O-RING SEGMENT
10-4	1	A204V	AS568A -204 O-RING, FKM, BROWN
11	1	PUMPKIT003	SS HARDWARE KIT FOR POLY PUMP
11-1	4	12715A	5/16-24 X 1 3/4" HHCS WITH TORQ-PATCH
11-2	10	12720	1/4-20 X 2 1/2" SL IND HEX WASHER HEAD SCREW
11-3	2	12725	#6 X 1/2" PPH SMS
11-4	1	12765A	5/16-24 X 1 1/8" HFS
11-5	1	12775A	7/16-14 HEX NUT
11-6	1	12900	#10 X 1 1/2" PPH SMS
11-7	4	12901	5/16" FLAT WASHER
11-8	1	12902A	3/16" SQ. X 5/8" KEY
11-9	10	V07018	1/4" LOCKWASHER
11-10	10	V07019	1/4"-20 S.S. HEX NUT
12	1	VL1005	FKM DECAL (N/S)



THIS DRAWING AND ALL INFORMATION CONTAINED THEREON ARE THE EXCLUSIVE PROPERTY OF BANJO CORPORATION.
 UNLESS SPECIFICALLY NOTED, THIS DRAWING AND ITEMS SHOWN ON THIS DRAWING ARE SUBJECT TO CHANGE AT ANY TIME.

BANJO CORPORATION
 150 BANJO DRIVE, CRAWFORDSVILLE, IN 47933
 WEB SITE: WWW.BANJO.CORP.COM
 E-MAIL: BANJOSALES@DEXCORP.COM
 DESCRIPTION
2" POLY WET SEAL PUMP W/ BEARING PED, FKM
 PART NUMBER
200PO-V