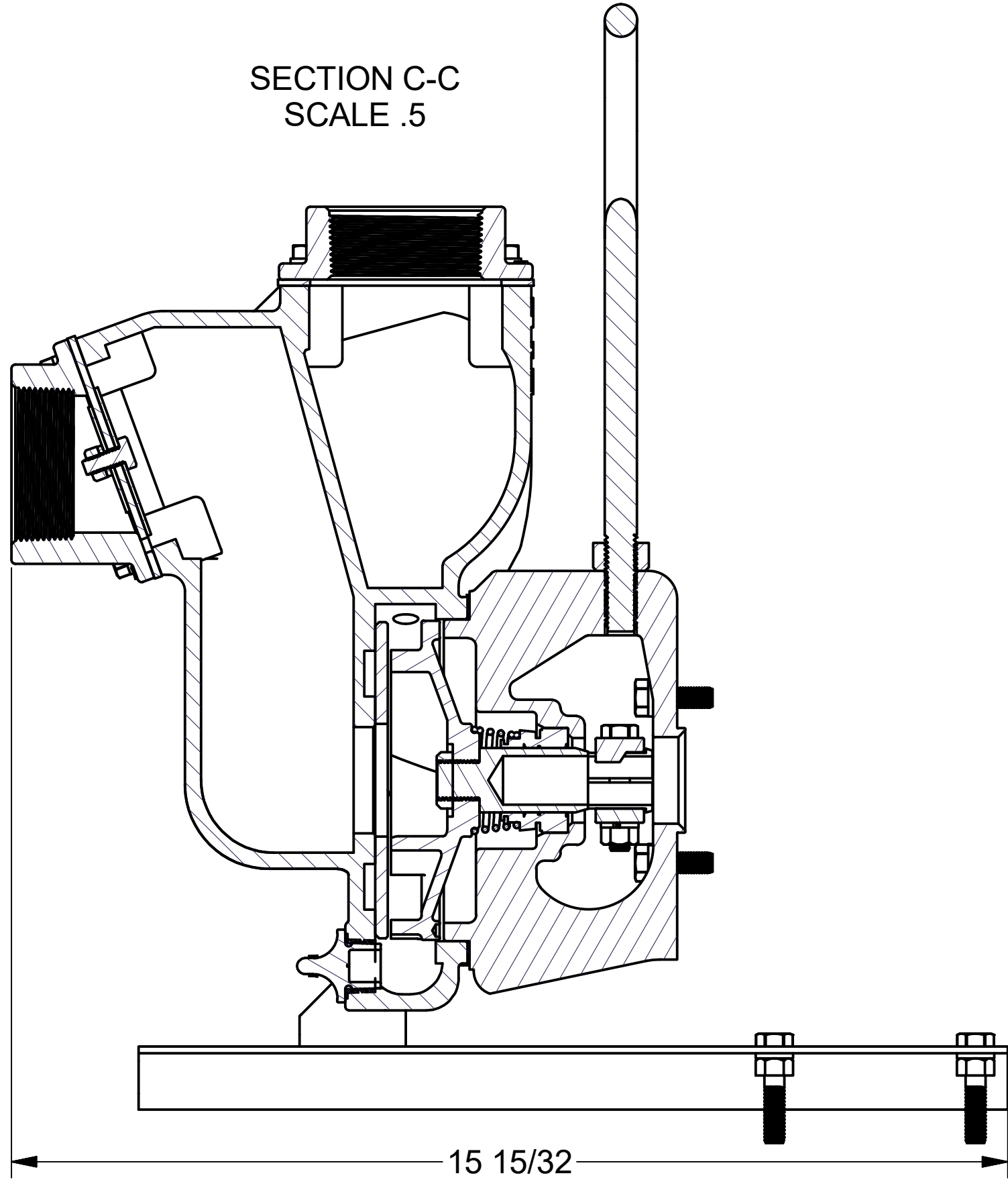
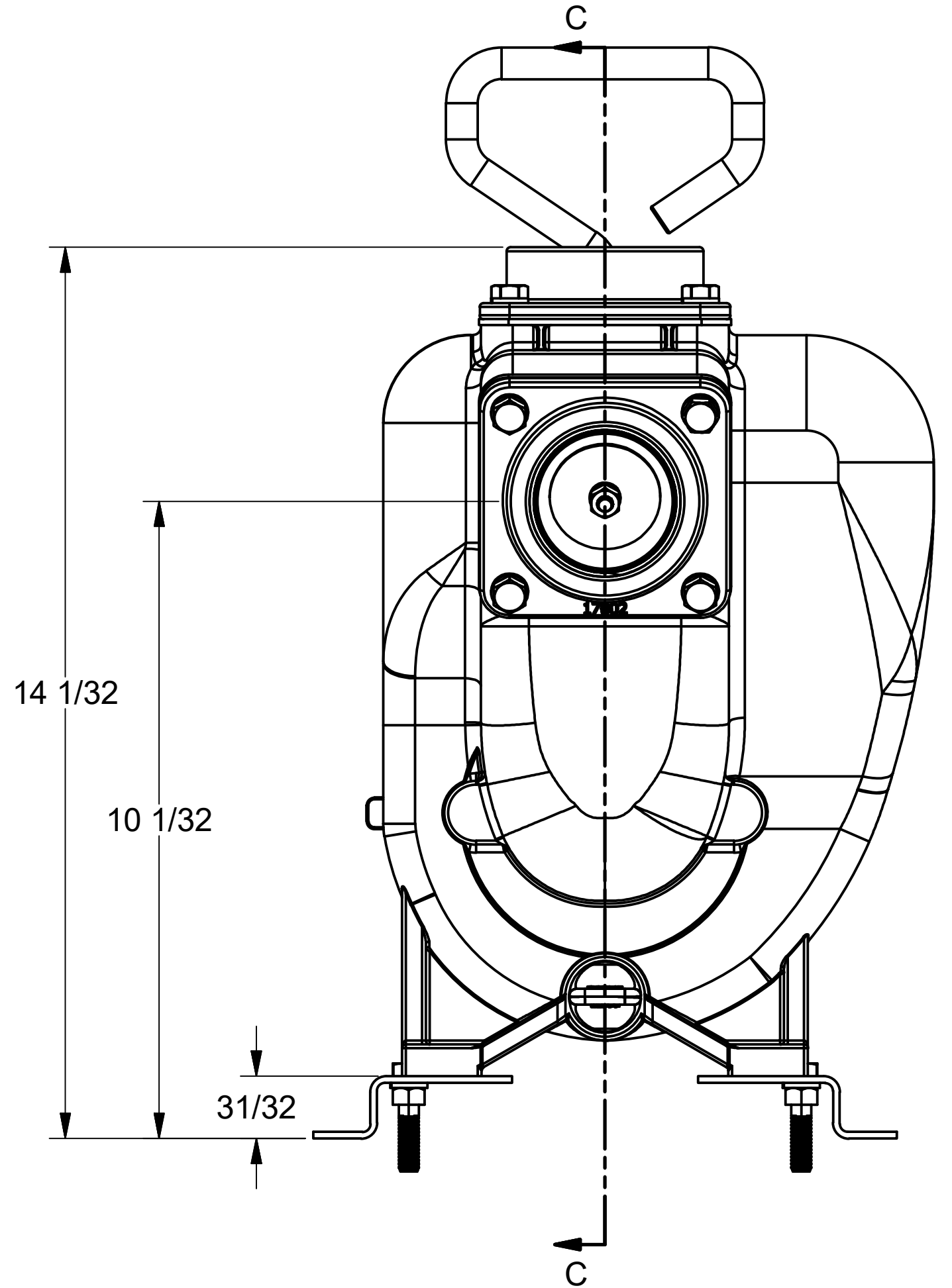
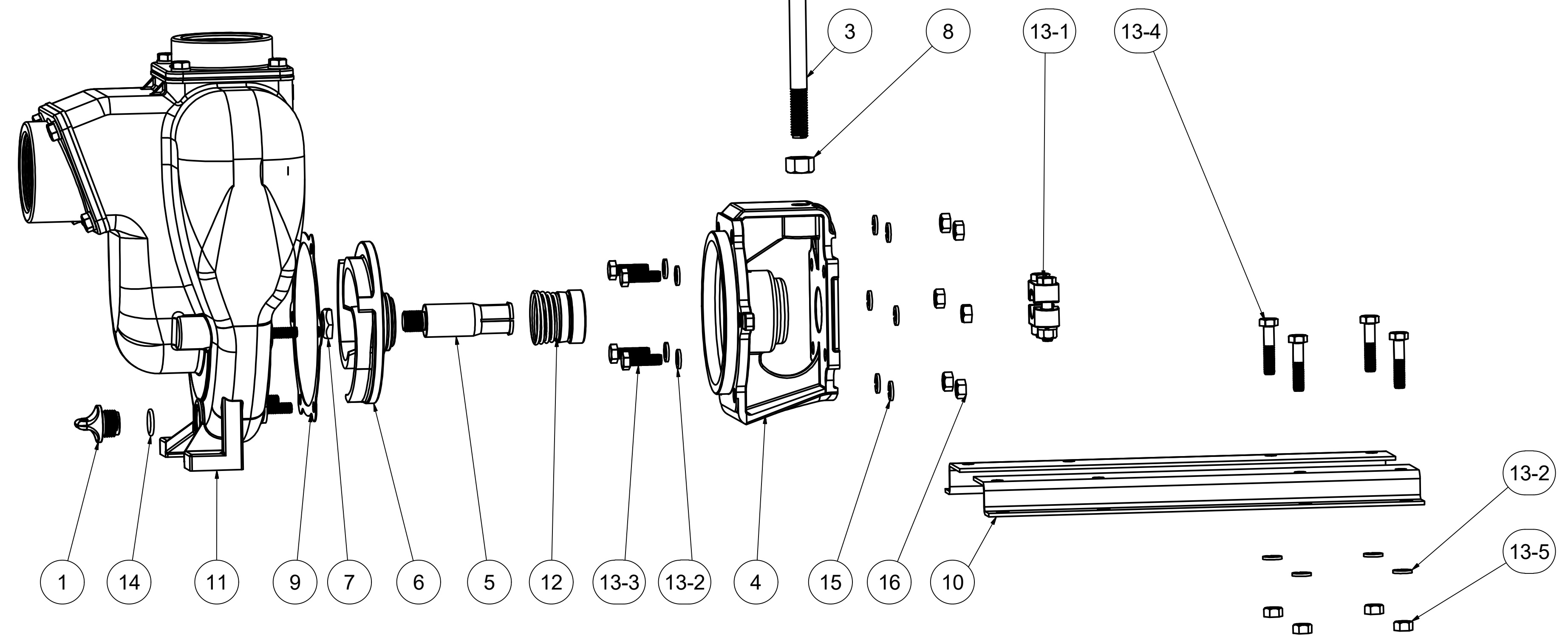


8 7 6 5 4 3 2 1



| Parts List |     |             |                       |
|------------|-----|-------------|-----------------------|
| ITEM       | QTY | PART NUMBER | DESCRIPTION           |
| 1          | 1   | 12777       | 1/2" DRAIN PLUG       |
| 2          | 1   | 12910       | DECAL (N/S)           |
| 3          | 1   | 15022       | 2" PUMP HANDLE        |
| 4          | 1   | 17004       | GAS ENGINE ADAPTER    |
| 5          | 1   | 17006       | ADAPTER SHAFT         |
| 6          | 1   | 17008       | PUMP IMPELLER         |
| 7          | 1   | 17009B      | 5/8-18 IMPELLER NUT   |
| 8          | 1   | 17010       | 1/2-13 HEX NUT        |
| 9          | 1   | 17018       | PUMP ADAPTER GASKET   |
| 10         | 1   | 17033       | Z-RAIL (PAIR)         |
| 11         | 1   | 17126       | 2" PUMP HOUSING ASSY  |
| 12         | 1   | 17135       | MECH. SEAL ASSY.      |
| 13         | 1   | PUMPKIT004  | KIT FOR 200POI        |
| 13-1       | 1   | 17123       | CI PUMP KEYED CLAMP   |
| 13-2       | 8   | V10118      | 5/16" LOCKWASHER      |
| 13-3       | 4   | 17040       | 5/16-24 X 1" HHCS     |
| 13-4       | 4   | 17034       | 5/16-18 X 1-1/2" HHCS |
| 13-5       | 4   | V10119      | 5/16" HEX NUT         |
| 14         | 1   | UV15163     | 2-114 O'RING          |
| 15         | 6   | V10118      | 5/16" LOCKWASHER      |
| 16         | 6   | V10119      | 5/16" HEX NUT         |



**BANJO CORPORATION**  
 150 BANJO DRIVE, CRAWFORDSVILLE, IN 47933  
 WEB SITE: WWW.BANJOCORP.COM  
 E-MAIL: SALES1@BANJOCORP.COM

THIS DRAWING AND ALL INFORMATION CONTAINED THEREON ARE THE EXCLUSIVE PROPERTY OF BANJO CORPORATION.

UNLESS SPECIFICALLY NOTED, THIS DRAWING AND ITEMS SHOWN ON THIS DRAWING ARE SUBJECT TO CHANGE AT ANY TIME.

|             |                 |
|-------------|-----------------|
| DESCRIPTION | 2" CI PUMP ONLY |
| PART NUMBER | 200POI          |

8 7 6 5 4 3 2 1