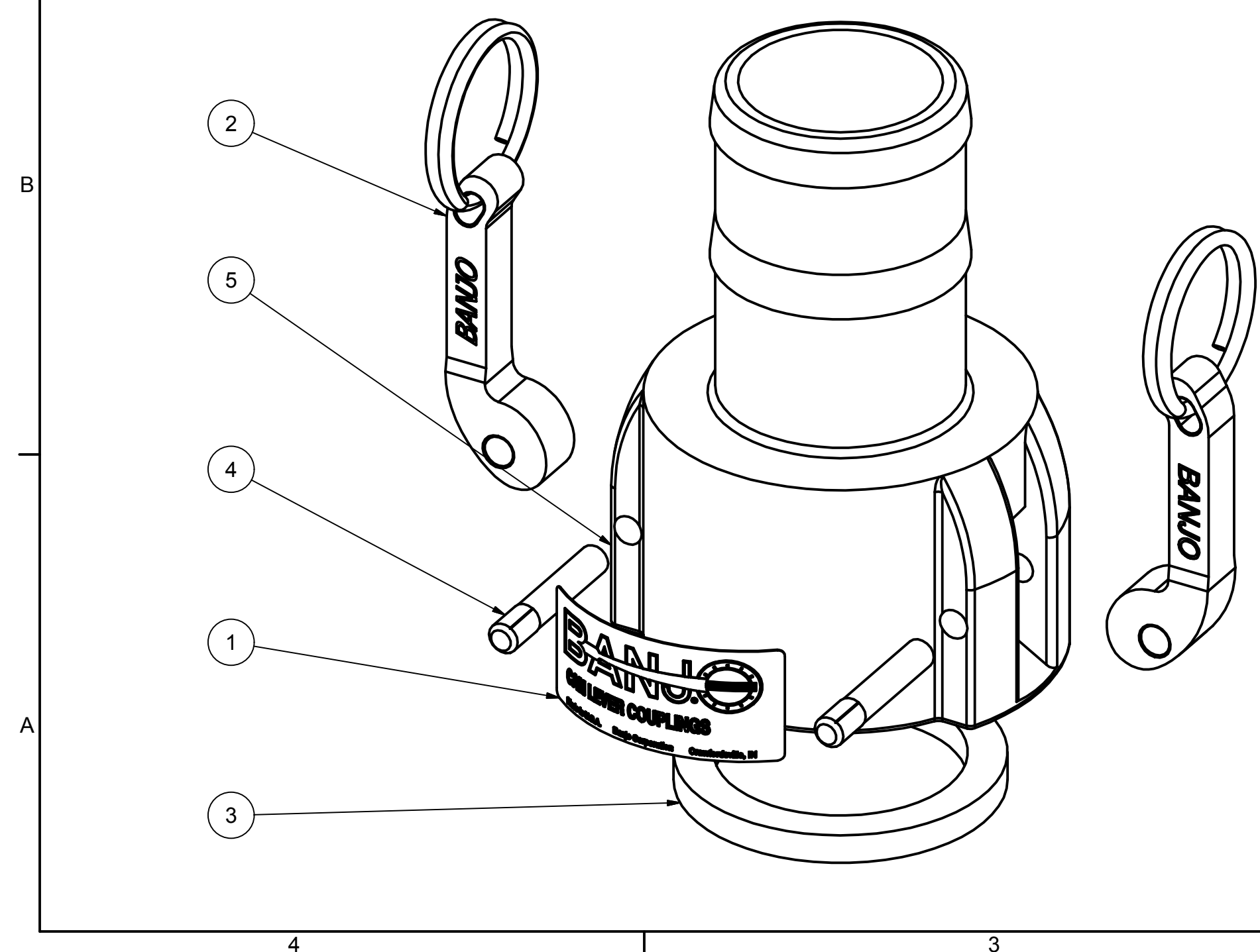
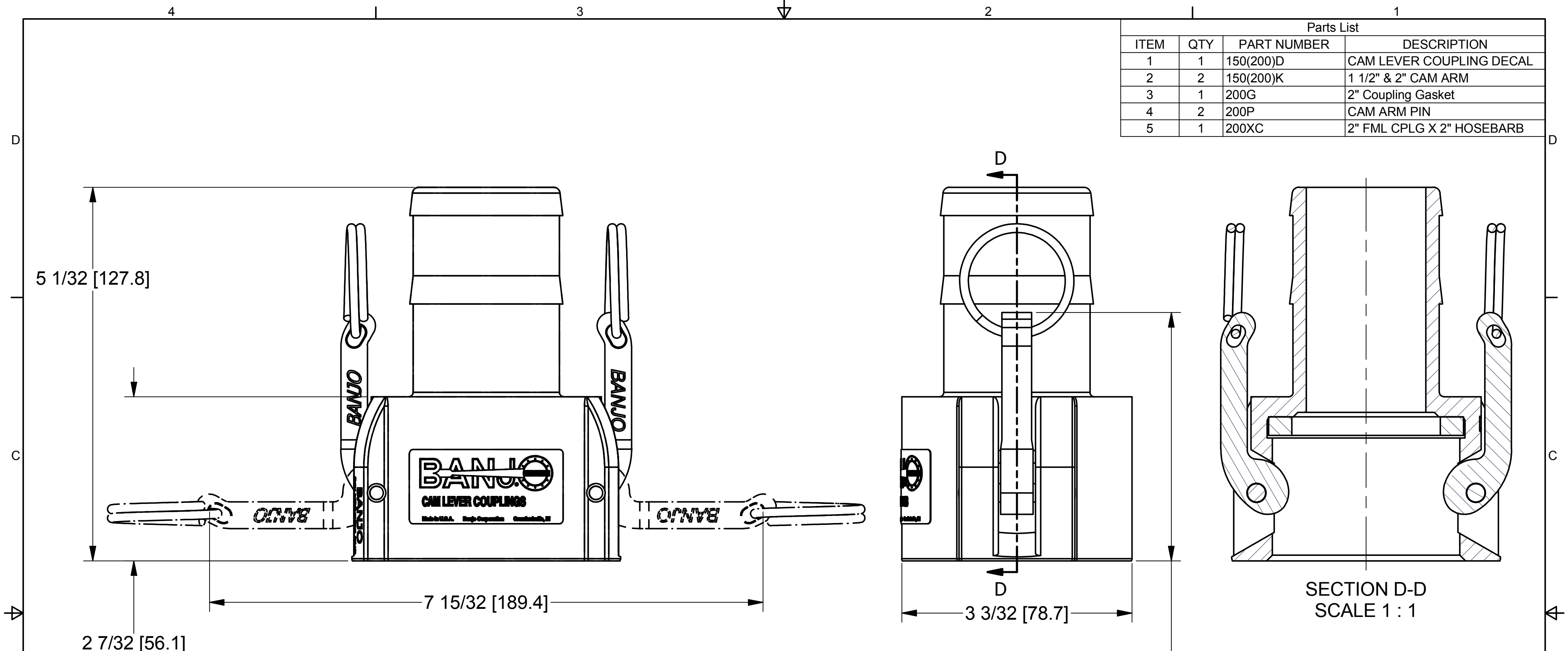


| Parts List |     |             |                           |
|------------|-----|-------------|---------------------------|
| ITEM       | QTY | PART NUMBER | DESCRIPTION               |
| 1          | 1   | 150(200)D   | CAM LEVER COUPLING DECAL  |
| 2          | 2   | 150(200)K   | 1 1/2" & 2" CAM ARM       |
| 3          | 1   | 200G        | 2" Coupling Gasket        |
| 4          | 2   | 200P        | CAM ARM PIN               |
| 5          | 1   | 200XC       | 2" FML CPLG X 2" HOSEBARB |



THIS DRAWING AND ALL INFORMATION CONTAINED THEREON ARE THE EXCLUSIVE PROPERTY OF BANJO CORPORATION.

**BANJO CORPORATION**  
 150 BANJO DRIVE, CRAWFORDSVILLE, IN 47933  
 WEB SITE: WWW.BANJOCORP.COM  
 E-MAIL: SALES1@BANJOCORP.COM

UNLESS SPECIFICALLY NOTED, THIS DRAWING AND ITEMS SHOWN ON THIS DRAWING ARE SUBJECT TO CHANGE AT ANY TIME.

DESCRIPTION  
**2" Female Coupler X 2" HB**

PART NUMBER  
**200C**