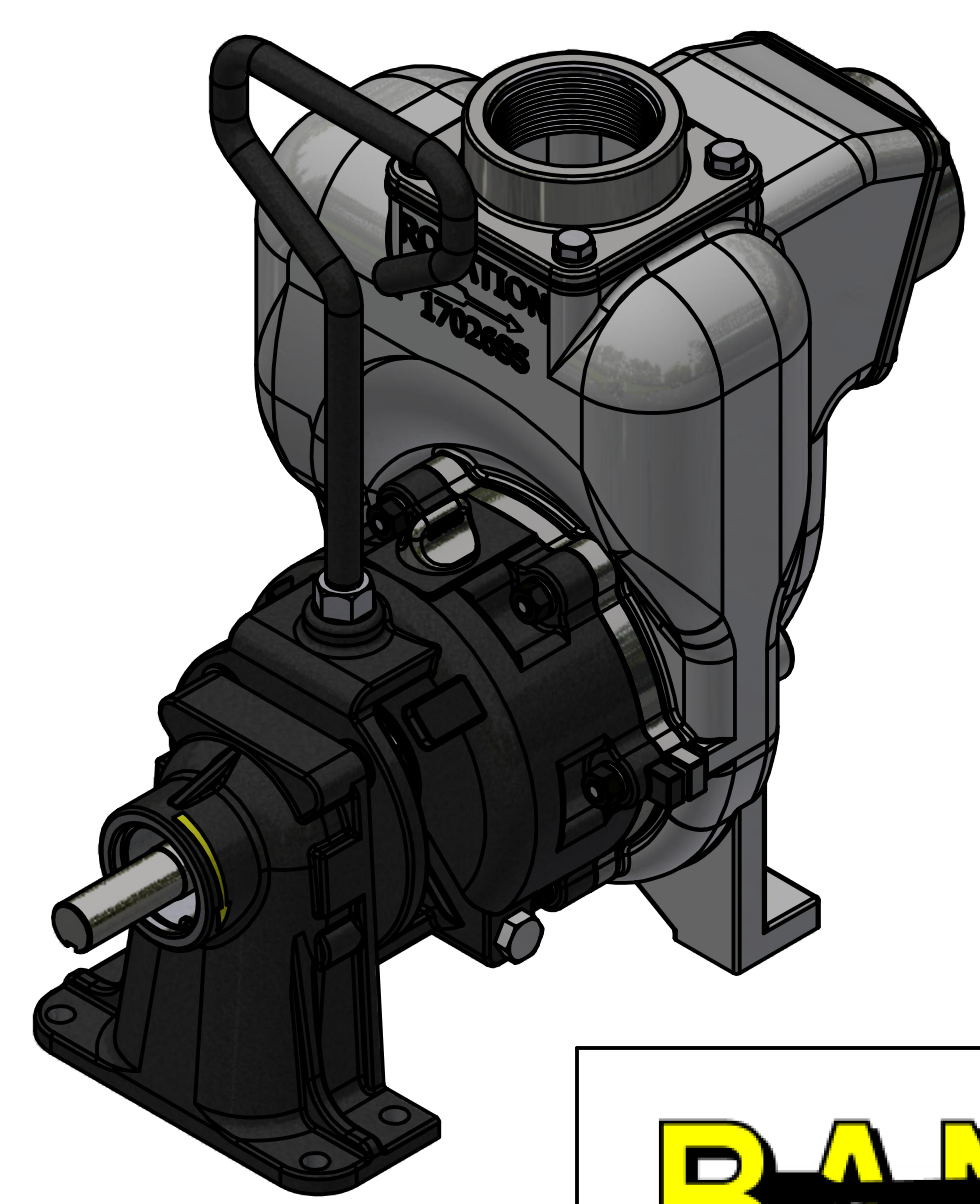
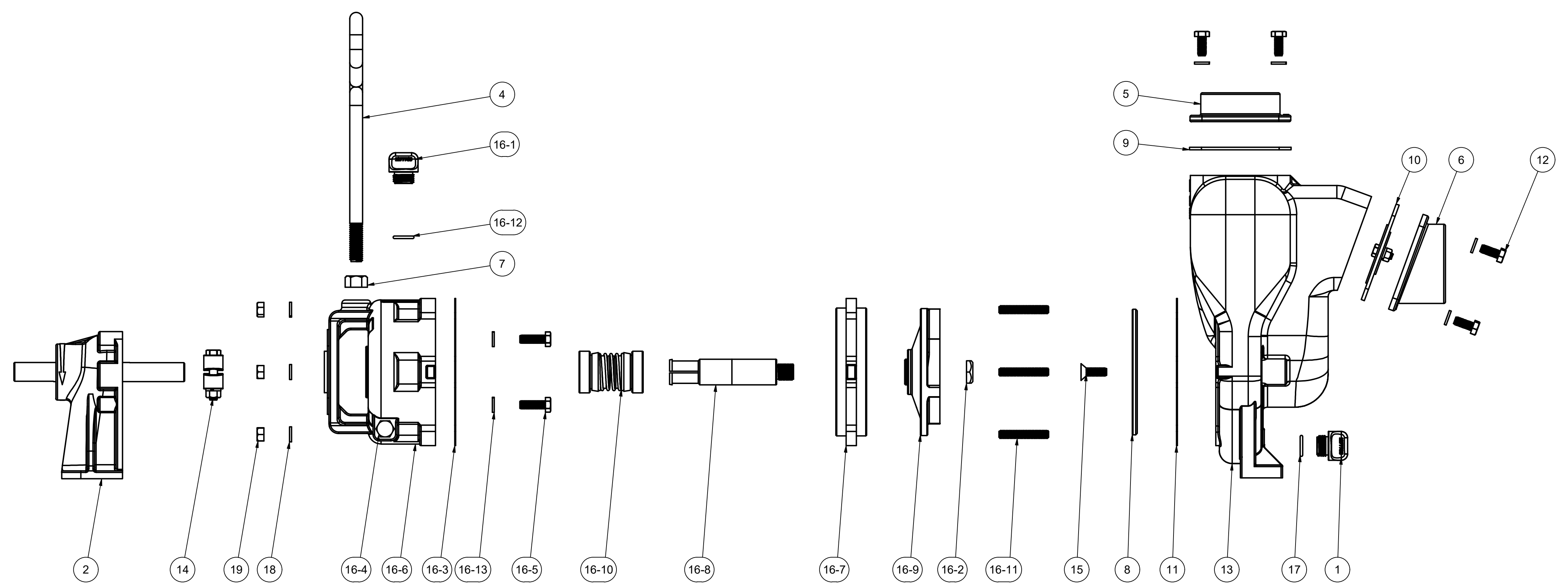


PARTS LIST			
ITEM	QTY	PART NUMBER	DESCRIPTION
1	1	12777SS	1/2" DRAIN PLUG
2	1	12882A	NEW STYLE BEARING PEDESTAL
3	1	12910	DECAL (N/S)
4	1	15022	2" PUMP HANDLE
5	1	17000SS	2" OUTLET FLANGE, SS
6	1	17002SS	2" INLET FLANGE, SS
7	1	17010	1/2-13 HEX NUT
8	1	17011SS	WEAR PLATE
9	1	17014	OUTLET FLANGE GASKET, FKM
10	1	17017	CI PUMP CHECK VALVE ASSY
11	1	17018	PUMP ADAPTER GASKET
12	8	17019	5/16-18 X 3/4" HHCS
13	1	17026SSX	2" PUMP HOUSING
14	1	17123	CI PUMP KEYED CLAMP
15	2	17130SS	5/16-18 X 1" FHSCS
16	1	17200ASS	2" SS WET SEAL ASSY, NEW
16-1	1	12777SS	1/2" DRAIN PLUG
16-2	1	17009B	5/8-18 IMPELLER NUT
16-3	1	17018	PUMP ADAPTER GASKET
16-4	1	17032	1/4" NPT DRAIN PLUG
16-5	4	17040	5/16-24 X 1" HHCS
16-6	1	17201A	WET SEAL RESERVOIR, NEW
16-7	1	17202SS	COVER PLATE
16-8	1	17206A	ADAPTER SHAFT
16-9	1	17208SS	PUMP IMPELLER
16-10	1	17235	MECH. SEAL ASSY.
16-11	6	17242	5/16-18 x 1 15/16" STUD
16-12	1	UV15163V	AS568A -114 O-RING, FKM, BROWN
16-13	4	V10118	5/16" LOCKWASHER
17	1	UV15163V	AS568A -114 O-RING, FKM, BROWN
18	14	V10118	5/16" LOCKWASHER
19	6	V10119	5/16"-18 SS NUT



THIS DRAWING AND ALL INFORMATION CONTAINED THEREON ARE THE EXCLUSIVE PROPERTY OF BANJO CORPORATION.

UNLESS SPECIFICALLY NOTED, THIS DRAWING AND ITEMS SHOWN ON THIS DRAWING ARE SUBJECT TO CHANGE AT ANY TIME.

BANJO CORPORATION  
 150 BANJO DRIVE, CRAWFORDSVILLE, IN 47933  
 WEB SITE: WWW.BANJO.CORP.COM  
 E-MAIL: BANJOSALES@DEXCORP.COM

DESCRIPTION  
**2"SS WET SEAL PUMP WITH BEARING PED**

PART NUMBER  
**201PBSSW**