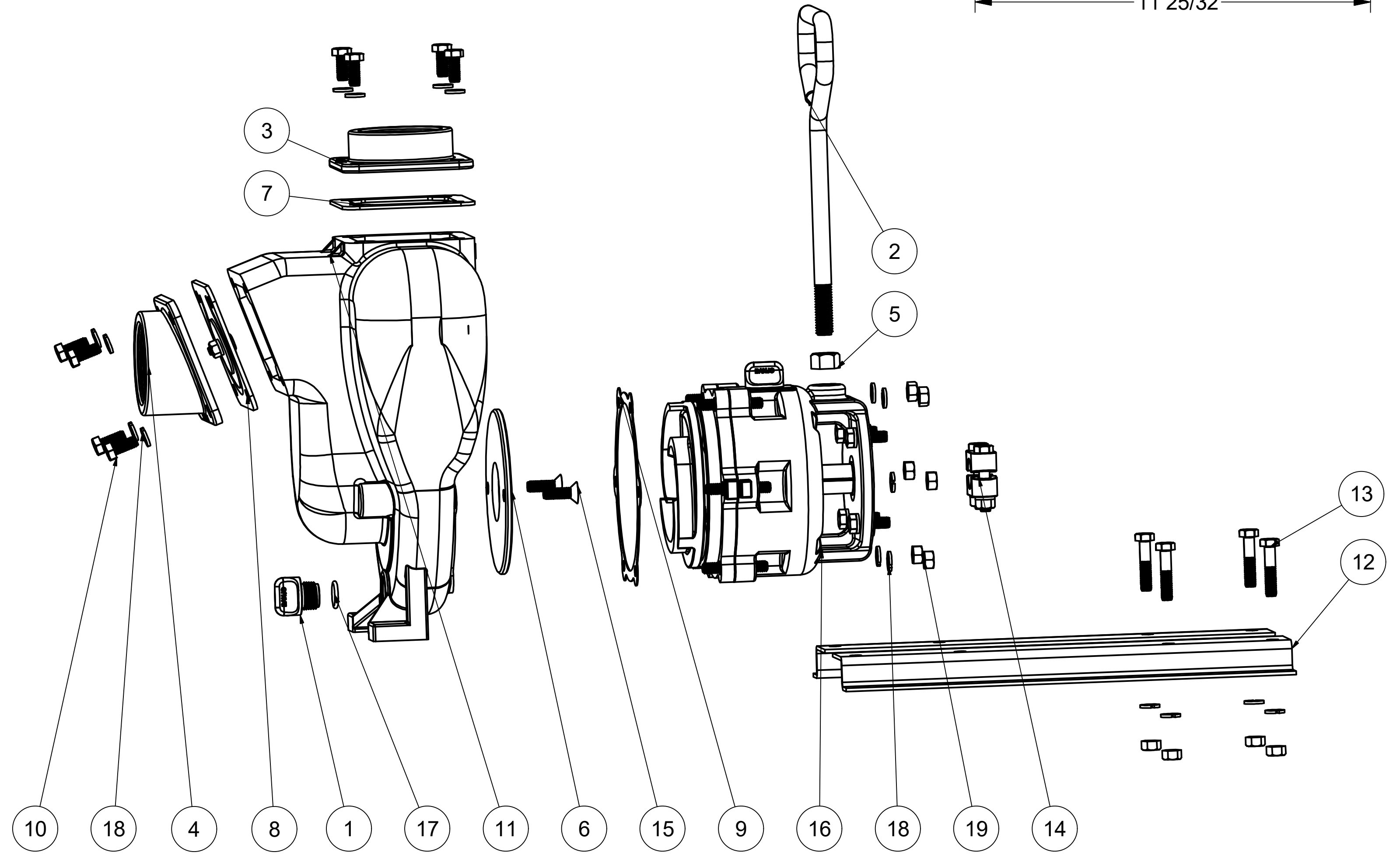


Parts List			
ITEM	QTY	PART NUMBER	DESCRIPTION
1	1	12777SS	1/2" DRAIN PLUG
2	1	15022	2" PUMP HANDLE
3	1	17000SS	2" OUTLET FLANGE, SS
4	1	17002SS	2" INLET FLANGE, SS
5	1	17010	1/2-13 HEX NUT
6	1	17011SS	WEAR PLATE
7	1	17014	OUTLET FLANGE GASKET, FKM
8	1	17017	CI PUMP CHECK VALVE ASSY
9	1	17018	PUMP ADAPTER GASKET
10	8	17019	5/16-18 X 3/4" HHCS
11	1	17026SSX	2" PUMP HOUSING
12	1	17033	Z-RAIL (PAIR)
13	4	17034	5/16-18 X 1-1/2" HHCS
14	1	17123	CI PUMP KEYED CLAMP
15	2	17130SS	5/16-18 X 1" FHSCS
16	1	17200ASS	2" SS WET SEAL ASSY, NEW
17	1	UV15163V	#114 O'RING, FKM
18	18	V10118	5/16" LOCKWASHER
19	10	V10119	5/16" HEX NUT
20	1	12910	DECAL (N/S)
21	1	KK-57	WET SEAL WARNING TAG (N/S)



THIS DRAWING AND ALL INFORMATION CONTAINED THEREON ARE THE EXCLUSIVE PROPERTY OF BANJO CORPORATION.

UNLESS SPECIFICALLY NOTED, THIS DRAWING AND ITEMS SHOWN ON THIS DRAWING ARE SUBJECT TO CHANGE AT ANY TIME.

BANJO CORPORATION
 150 BANJO DRIVE, CRAWFORDSVILLE, IN 47933
 WEB SITE: WWW.BANJOCORP.COM
 E-MAIL: SALES1@BANJOCORP.COM

DESCRIPTION
2" SS WET SEAL PUMP ONLY

PART NUMBER
201POSSW