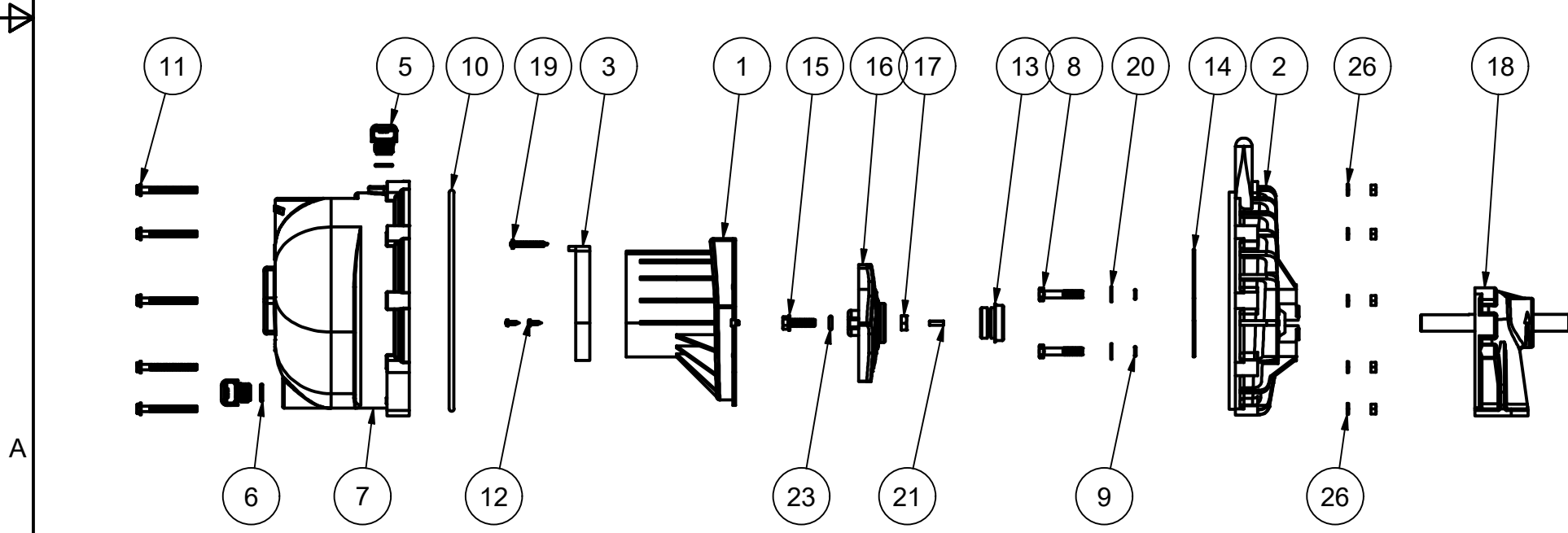



PARTS LIST			
ITEM	QTY	PART NUMBER	DESCRIPTION
1	1	12702A	2" POLY PUMP VOLUTE
2	1	12703A	POLY PUMP REAR BRACKET
3	1	12705V	PUMP CHECKVALVE, FKM
4	1	12712AVP	2" POLY PUMP BODY- FKM
5	2	12777	1/2" DRAIN PLUG
6	2	UV15163V	#114 O'RING, FKM
7	1	X12712A	2" POLY PUMP BODY
8	4	12715A	5/16-24 X 1 3/4" HHCS WITH TORQ-PATCH
9	4	12717V	AS568A -011 O-RING, FKM, BROWN
10	1	12719AV	AS568A -375 O-RING, FKM, BROWN
11	10	12720	1/4-20 X 2 1/2" SL IND HWHS
12	2	12725	#6 X 1/2" PPH SMS
13	1	12733V	MECH SEAL ASSY - FKM
14	1	12754V	O-RING SEGMENT
15	1	12765A	5/16-24 X 1 1/8" HFS
16	1	12772	IMPELLER
17	1	12775A	7/16-14 HEX NUT
18	1	12882A	BEARING PEDESTAL
19	1	12900	#10 X 1 1/2" PPH SMS
20	4	12901	5/16" FLAT WASHER
21	1	12902A	3/16" SQ. X 5/8" KEY
22	1	12910	DECAL (N/S)
23	1	A204V	#204 O'RING, FKM
24	1	CE050D	CE DECAL (N/S)
25	1	LST1100D	PSI DECAL (N/S)
26	10	V07018	1/4" LOCKWASHER
27	10	V07019	1/4-20 HEX NUT





BANJO CORPORATION
 150 BANJO DRIVE, CRAWFORDSVILLE, IN 47933
 WEB SITE: WWW.BANJOCORP.COM
 E-MAIL: BANJOSALES@IDEXCORP.COM

<p>THIS DRAWING AND ALL INFORMATION CONTAINED THEREON ARE THE EXCLUSIVE PROPERTY OF BANJO CORPORATION.</p> <p>UNLESS SPECIFICALLY NOTED, THIS DRAWING AND ITEMS SHOWN ON THIS DRAWING ARE SUBJECT TO CHANGE AT ANY TIME.</p>	<p>DESCRIPTION 2" POLY PUMP W/ BEARING PED., FKM, 5 VANE IMP.</p> <p>PART NUMBER 205PB-V</p>
--	--