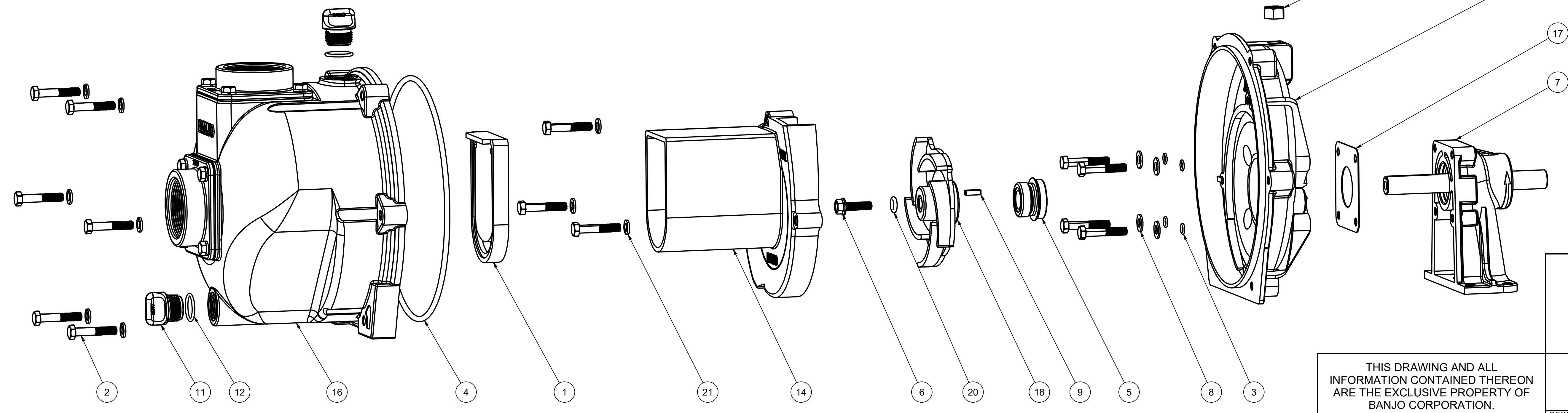


Parts List			
ITEM	QTY	PART NUMBER	DESCRIPTION
1	1	12705	PUMP CHECKVALVE, EPDM
2	13	12715A	5/16-24 X 1 3/4" HHCS WITH TORQ-PATCH
3	4	12717	AS568A -011 O-RING, EPDM
4	1	12719A	AS568A -375 O-RING, EPDM, BLACK
5	1	12733	MECHANICAL SEAL ASSY
6	1	12765A	5/16-24 X 1 1/8" HFS
7	1	12882A	BEARING PEDESTAL
8	4	12901	5/16" FLAT WASHER
9	1	12902A	3/16" SQ. X 5/8" KEY
10	1	12910	DECAL (N/S)
11	2	13777	3/4" DRAIN PLUG
12	2	13778	AS568A -119 O-RING, EPDM, BLACK
13	1	15022	2" PUMP HANDLE
14	1	15702	2" CI PUMP VOLUTE
15	1	15703	2" CI REAR BRACKET
16	1	15712	2" CI PUMP BODY ASSY
17	1	15751	REAR BRACKET SHIM
18	1	15772	5 VANE IMPELLER
19	1	17010	1/2-13 HEX NUT
20	1	A204	AS568A -204 O-RING, EPDM, BLACK
21	9	V10118	5/16" LOCKWASHER



THIS DRAWING AND ALL INFORMATION CONTAINED THEREON ARE THE EXCLUSIVE PROPERTY OF BANJO CORPORATION.

UNLESS SPECIFICALLY NOTED, THIS DRAWING AND ITEMS SHOWN ON THIS DRAWING ARE SUBJECT TO CHANGE AT ANY TIME.

BANJO CORPORATION
 150 BANJO DRIVE, CRAWFORDSVILLE, IN 47933
 WEB SITE: WWW.BANJO.CORP.COM
 E-MAIL: BANJOSALES@IDEXCORP.COM

DESCRIPTION
222 CI PUMP W/ BEARING PEDESTAL, EPDM

PART NUMBER
222PBI