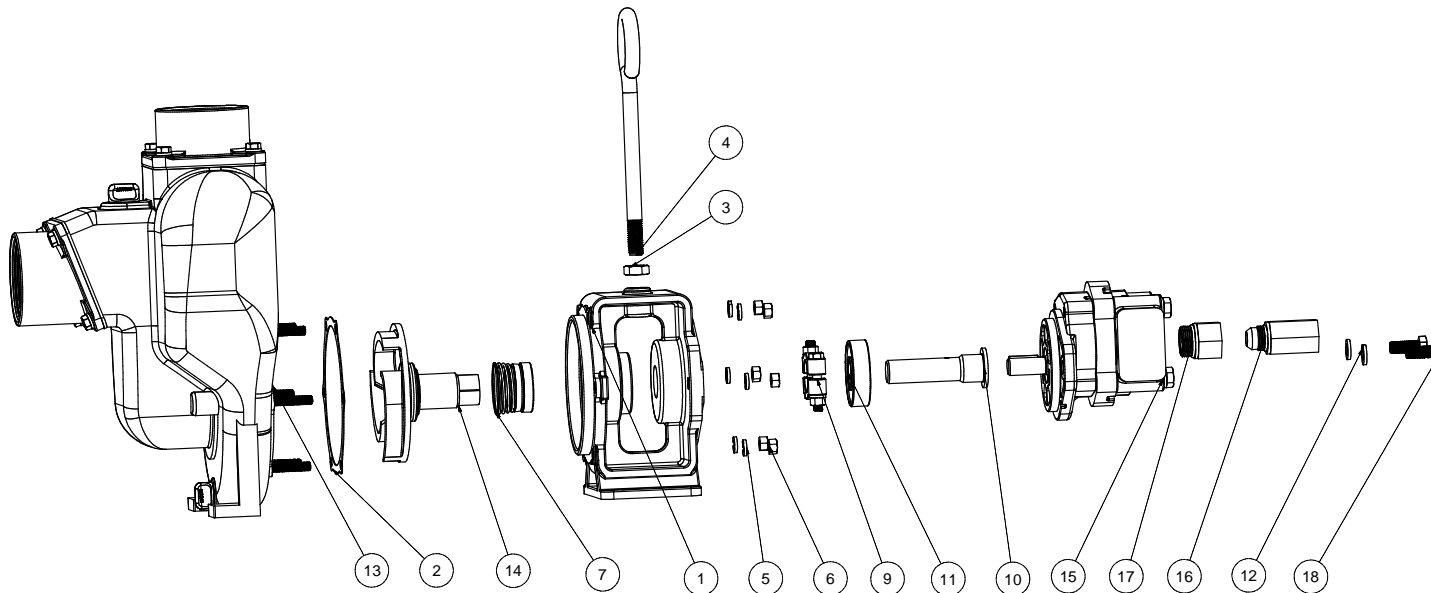


| Parts List | | | |
|------------|-----|-------------|---------------------------|
| ITEM | QTY | PART NUMBER | DESCRIPTION |
| 1 | 1 | 18049SS | CI HYD ADAPTER, SS |
| 2 | 1 | 18021 | PUMP ADAPTER GASKET |
| 3 | 1 | 18034 | 5/8-11 JAM NUT |
| 4 | 1 | 18033 | PUMP HANDLE |
| 5 | 6 | V20018 | 3/8" LOCKWASHER |
| 6 | 6 | V20019 | 3/8" HEX NUT |
| 7 | 1 | 18125SS | MECH. SEAL ASSY. |
| 8 | 1 | 12910 | DECAL (N/S) |
| 9 | 1 | 18029 | CLAMP |
| 10 | 1 | 18055 | HYD. MTR. ADPT. SHAFT |
| 11 | 1 | 18502 | BEARING PEDESTAL BEARING |
| 12 | 2 | 18058 | 1/2" LOCKWASHER |
| 13 | 1 | 18126SS | 3" SS PUMP SUBASSEMBLY |
| 14 | 1 | 18023SS | IMPELLER |
| 15 | 1 | HY10121 | UM16-45A-HX HYD. MTR |
| 16 | 1 | HY10122 | LT12-00W HYD. CHECK VALVE |
| 17 | 1 | HY10123 | 6410-16-12 HYD. BUSHING |
| 18 | 2 | 17449 | 1/2-13 X 1 1/4" HHCS |



THIS DRAWING AND ALL INFORMATION CONTAINED THEREON ARE THE EXCLUSIVE PROPERTY OF BANJO CORPORATION.
UNLESS SPECIFICALLY NOTED, THIS DRAWING AND ITEMS SHOWN ON THIS DRAWING ARE SUBJECT TO CHANGE AT ANY TIME.

BANJO CORPORATION
 150 BANJO DRIVE, CRAWFORDSVILLE, IN 47933
 WEB SITE: WWW.BANJOCORP.COM
 E-MAIL: SALES1@BANJOCORP.COM

BANJO CORPORATION
 DESCRIPTION: 3" SS PUMP W/ HYDRAULIC MOTOR
 PART NUMBER: 300PHYSS