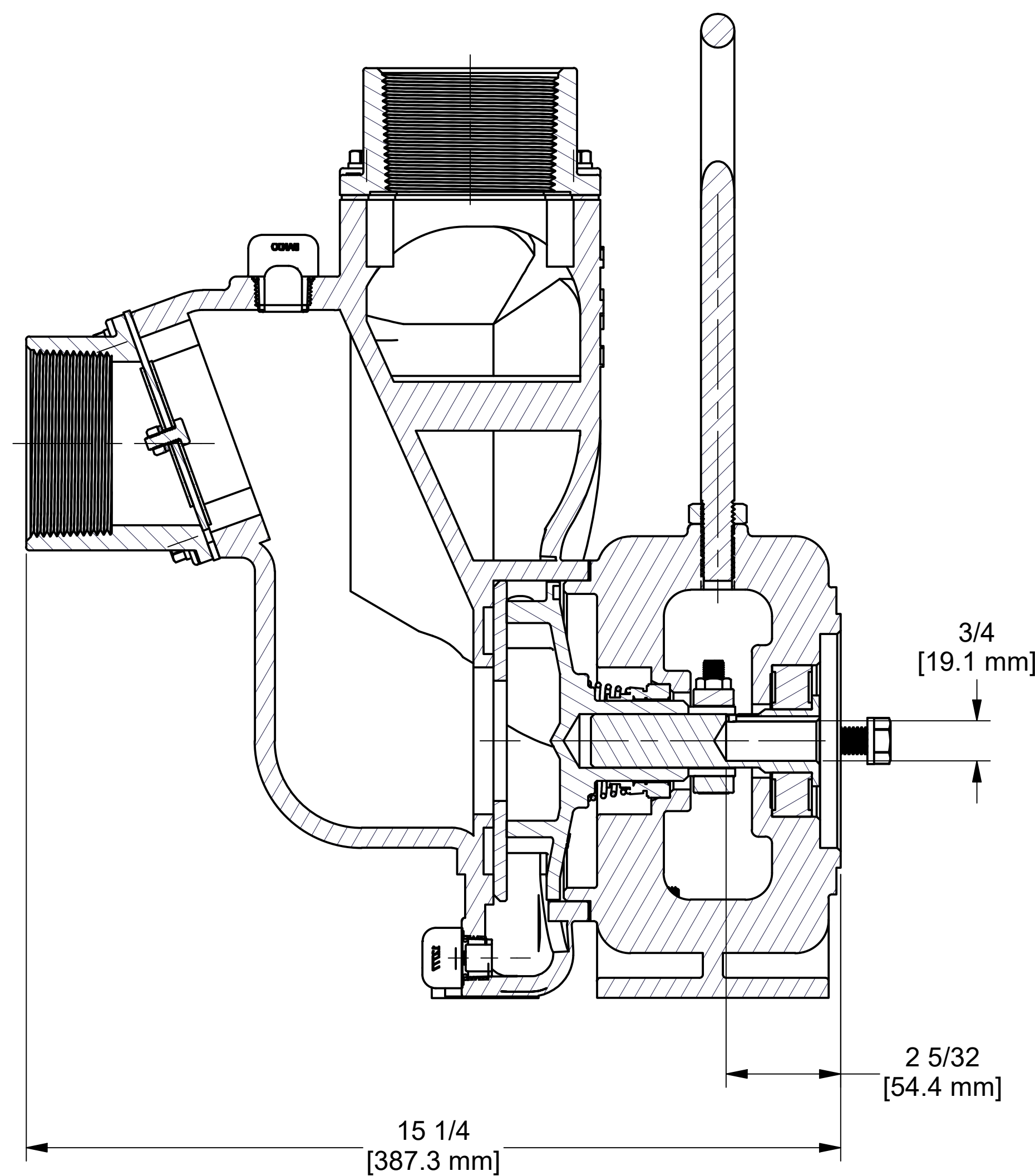
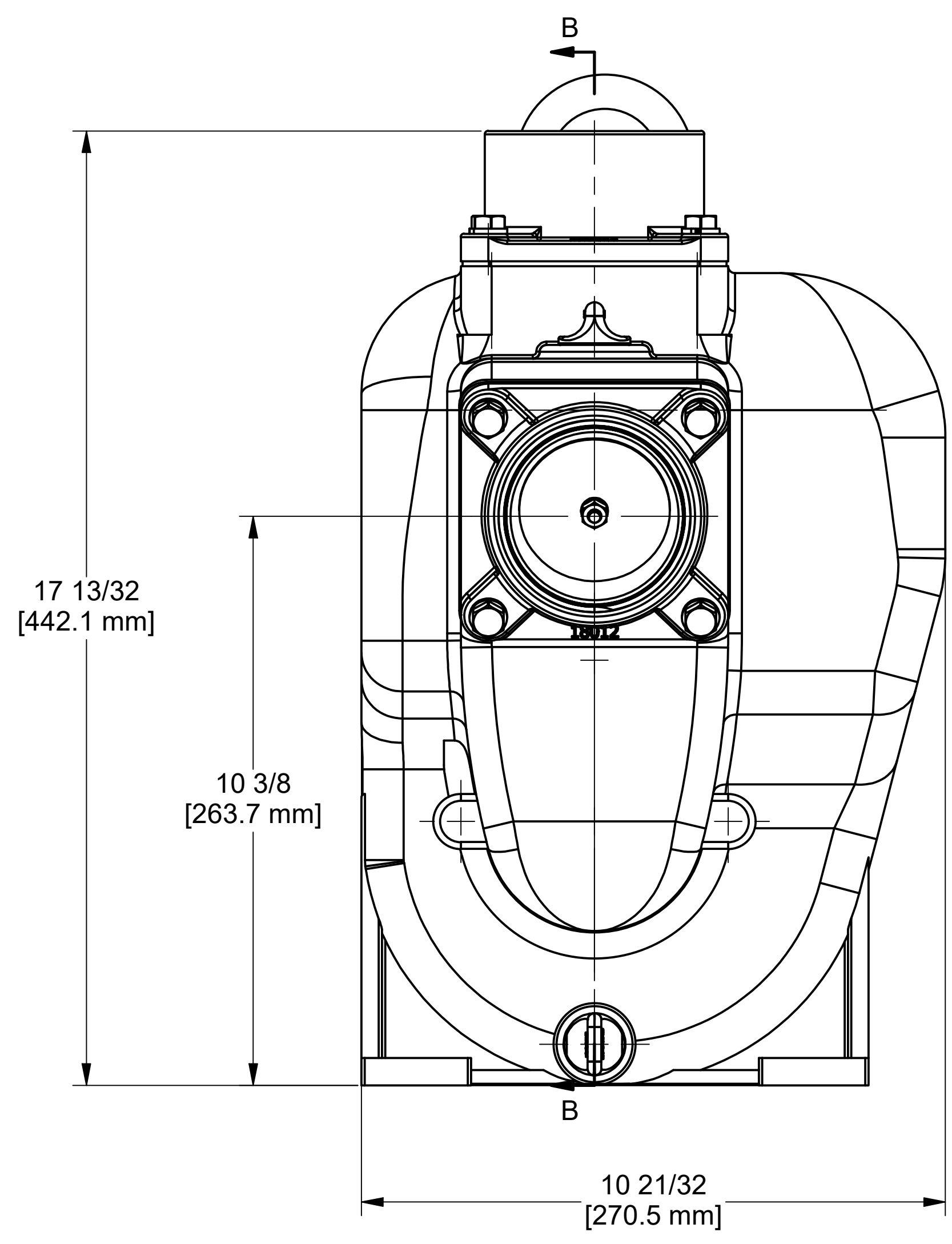
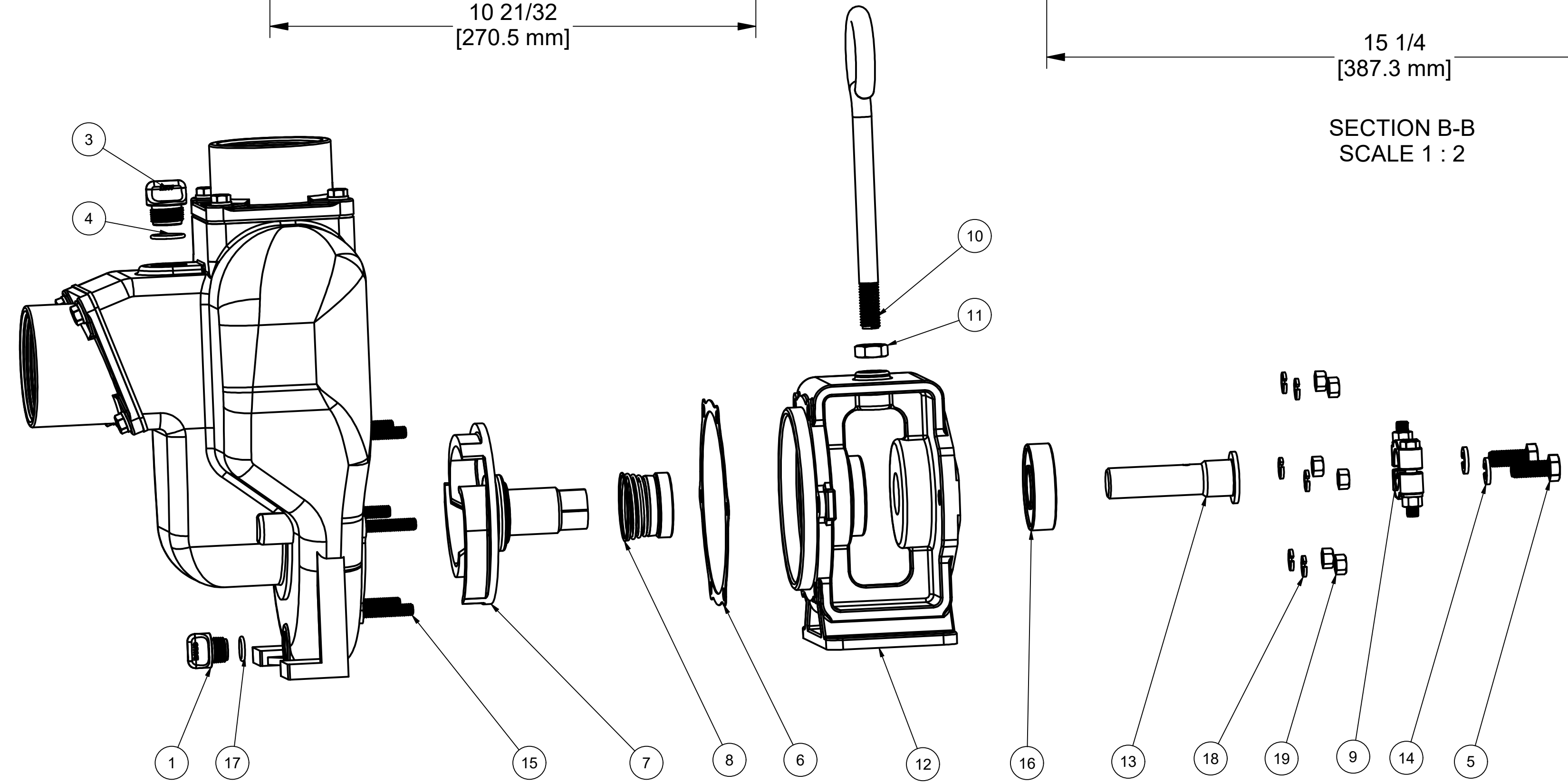


PARTS LIST			
ITEM	QTY	PART NUMBER	DESCRIPTION
1	1	12777	1/2" DRAIN PLUG
2	1	12910	DECAL (N/S)
3	1	13777	3/4" DRAIN PLUG, MOLDED
4	1	13778	AS568A -119 O-RING, EPDM, BLACK
5	2	17449	1/2-13 X 1 1/4" HHCS
6	1	18021	PUMP ADAPTER GASKET
7	1	18023SS	3" 316 SS PUMP IMPELLER
8	1	18025	MECH. SEAL ASSY.
9	1	18029	CLAMP
10	1	18033	PUMP HANDLE
11	1	18034	5/8-11 JAM NUT
12	1	18049	CI HYD ADAPTER
13	1	18055	HYD. MTR. ADPT. SHAFT
14	2	18058	1/2" LOCKWASHER
15	1	18126	3" CI PUMP SUB-ASSEMBLY
16	1	18502	BEARING PEDESTAL BEARING
17	1	UV15163	AS568A -114 O-RING, EPDM, BLACK
18	6	V20018	3/8" LOCKWASHER
19	6	V20019	3/8-16 HEX NUT



SECTION B-B
SCALE 1 : 2



BANJO CORPORATION
150 BANJO DRIVE, CRAWFORDSVILLE, IN 47933
WEB SITE: WWW.BANJO.CORP.COM
E-MAIL: BANJOSALES@DEXCORP.COM

THIS DRAWING AND ALL INFORMATION CONTAINED THEREON ARE THE EXCLUSIVE PROPERTY OF BANJO CORPORATION.
UNLESS SPECIFICALLY NOTED, THIS DRAWING AND ITEMS SHOWN ON THIS DRAWING ARE SUBJECT TO CHANGE AT ANY TIME.

DESCRIPTION
3" PUMP W/HYDRAULIC ADAPTOR
PART NUMBER
300PIHA