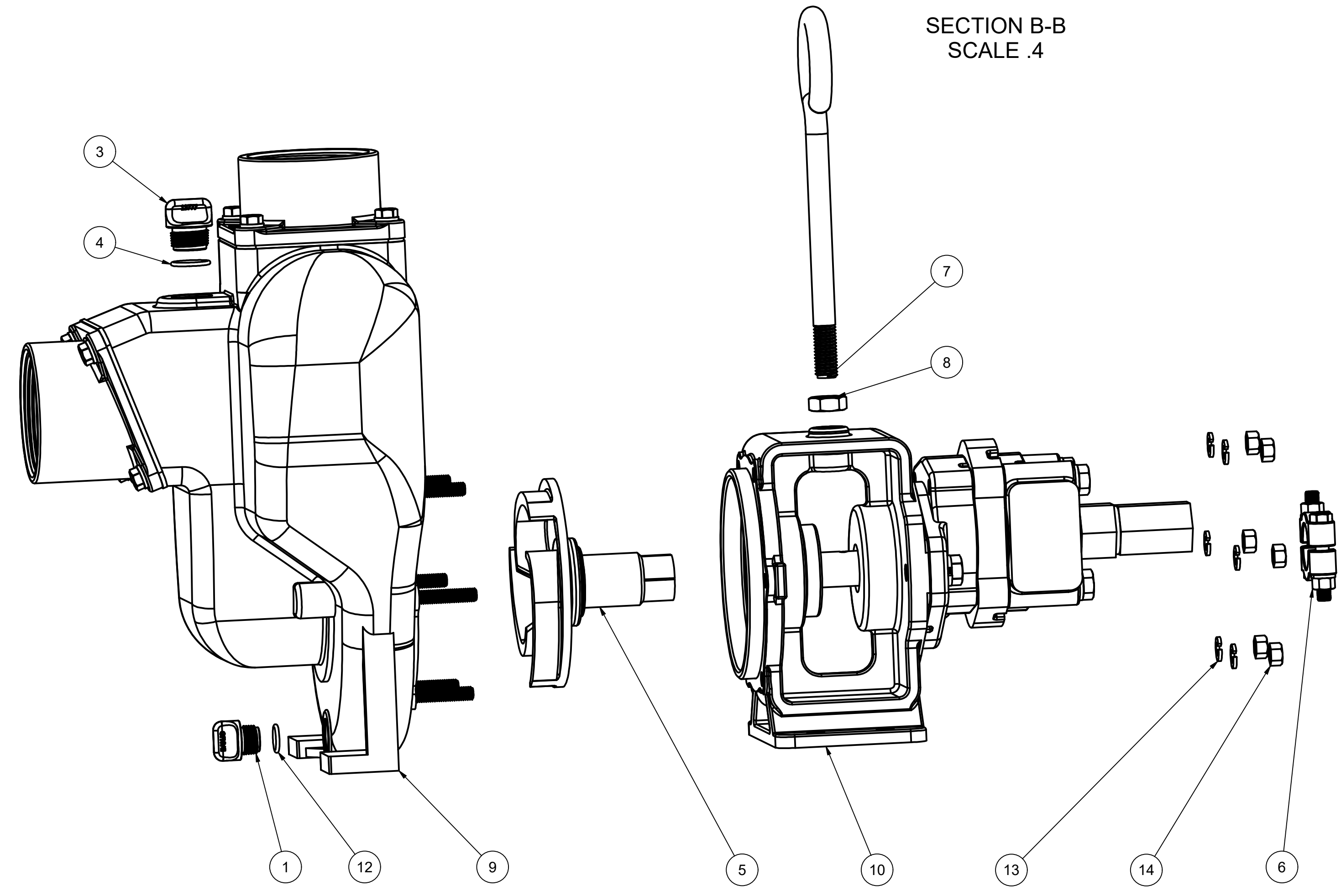


SECTION B-B
SCALE .4



PARTS LIST			
ITEM	QTY	PART NUMBER	DESCRIPTION
1	1	12777	1/2" DRAIN PLUG
2	1	12910	DECAL (N/S)
3	1	13777	3/4" DRAIN PLUG, MOLDED
4	1	13778	AS568A -119 O-RING, EPDM, BLACK
5	1	18023SS	3" 316 SS PUMP IMPELLER
6	1	18029	CLAMP
7	1	18033	PUMP HANDLE
8	1	18034	5/8-11 JAM NUT
9	1	18126	3" CI PUMP SUB-ASSEMBLY
10	1	18600	HYDRAULIC MOTOR ADPT ASSEMBLY
11	1	KK-78	HYD. MTR WARNING TAG
12	1	UV15163	AS568A -114 O-RING, EPDM, BLACK
13	6	V20018	3/8" LOCKWASHER
14	6	V20019	3/8-16 HEX NUT



BANJO CORPORATION
150 BANJO DRIVE, CRAWFORDSVILLE, IN 47933
WEB SITE: WWW.BANJO.CORP.COM
E-MAIL: BANJOSALES@IDEXCORP.COM

THIS DRAWING AND ALL INFORMATION CONTAINED THEREON ARE THE EXCLUSIVE PROPERTY OF BANJO CORPORATION.
UNLESS SPECIFICALLY NOTED, THIS DRAWING AND ITEMS SHOWN ON THIS DRAWING ARE SUBJECT TO CHANGE AT ANY TIME.

DESCRIPTION
3" CI PUMP W/HYDRAULIC MOTOR
PART NUMBER
300PIHY