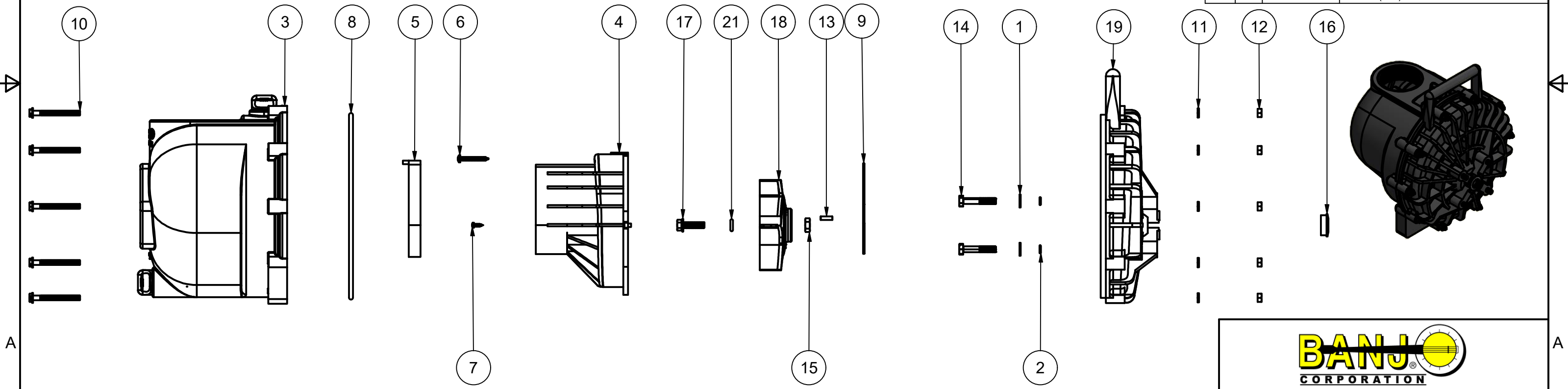



Parts List			
ITEM	QTY	PART NUMBER	DESCRIPTION
1	4	12901	5/16" FLAT WASHER
2	4	12717V	#11 O'RING, FKM
3	1	13712VP	3" POLY PUMP BODY ASSEMBLY - FKM
4	1	13702	3" POLY PUMP VOLUTE
5	1	12705V	PUMP CHECKVALVE, FKM
6	1	12900	#10 X 1 1/2" PPH SMS
7	2	12725	#6 X 1/2" PPH SMS
8	1	12719AV	#375 O'RING, FKM
9	1	12754V	O'RING SEGMENT
10	10	12720	1/4-20 X 2 1/2" SL IND HWHS
11	10	V07018	1/4" LOCKWASHER
12	10	V07019	1/4-20 HEX NUT
13	1	12902A	3/16" SQ. X 5/8" KEY
14	4	12715A	5/16-24 X 1 3/4" HHCS WITH TORQ-PATCH
15	1	12775A	7/16-14 HEX NUT
16	1	12716	PUMP SLINGER
17	1	12765A	5/16-24 X 1 1/8" HFS
18	1	13771	3" POLY PUMP TRIMMED IMPELLER
19	1	12703A	POLY PUMP REAR BRACKET
20	1	12733V	MECH SEAL ASSY - FKM
21	1	A204V	#204 O'RING, FKM
22	1	12910	DECAL (N/S)



THIS DRAWING AND ALL INFORMATION CONTAINED THEREON ARE THE EXCLUSIVE PROPERTY OF BANJO CORPORATION.

UNLESS SPECIFICALLY NOTED, THIS DRAWING AND ITEMS SHOWN ON THIS DRAWING ARE SUBJECT TO CHANGE AT ANY TIME.



BANJO CORPORATION

150 BANJO DRIVE, CRAWFORDSVILLE, IN 47933
 WEB SITE: WWW.BANJOCORP.COM
 E-MAIL: BANJOSALES@IDEXCORP.COM

DESCRIPTION
3" POLY PUMP ONLY- FKM

PART NUMBER
300POV