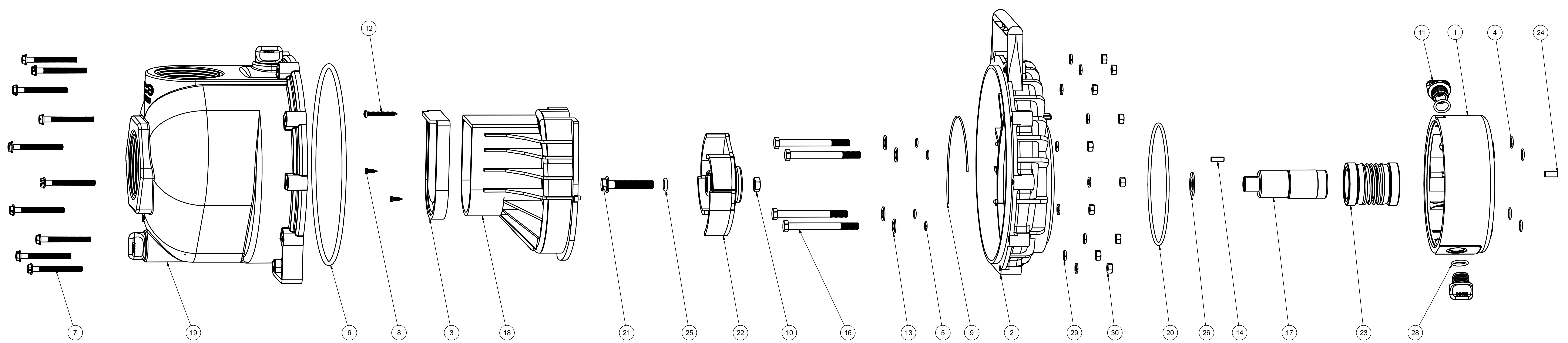


ITEM	QTY	PART NUMBER	DESCRIPTION
1	1	12201W	3" WET SEAL RESERVOIR
2	1	12703AW	3" W.S. REAR BRACKET
3	1	12705	PUMP CHECKVALVE, EPDM
4	4	12709	#13 O-RING, EPDM
5	4	12717	#11 O-RING, EPDM
6	1	12719A	#375 O-RING, EPDM
7	10	12720	1/4-20 X 2 1/2" SL IND HWHS
8	2	12725	#6 X 1/2" PPH SMS
9	1	12754	O-RING SEGMENT
10	1	12775A	7/16-14 HEX NUT
11	2	12777	1/2" DRAIN PLUG
12	1	12900	#10 X 1 1/2" PPH SMS
13	4	12901	5/16" FLAT WASHER
14	1	12902A	3/16" SQ. X 5/8" KEY
15	1	12910	DECAL (NS)
16	4	13034	5/16-24 X 3 1/2" HHCS
17	1	13055	ADAPTER SHAFT
18	1	13702	3" POLY PUMP VOLUTE
19	1	13712	3" POLY PUMP BODY ASSY.
20	1	13719	#256 O-RING, EPDM
21	1	13766	3/8-24 X 2 1/4" HFS
22	1	13772	3" POLY PUMP IMPELLER
23	1	15035E	SEAL ASSY.
24	1	16901	1/4" SQ. X 3/4" KEY
25	1	A204	#204 O-RING, EPDM
26	1	CV10175	ADAPTER GASKET
27	1	KK-57	WET SEAL WARNING TAG (N/S)
28	2	UV15163	#114 O-RING, EPDM
29	10	V07018	1/4" LOCKWASHER
30	10	V07019	1/4-20 HEX NUT



THIS DRAWING AND ALL INFORMATION CONTAINED THEREON ARE THE EXCLUSIVE PROPERTY OF BANJO CORPORATION.

UNLESS SPECIFICALLY NOTED, THIS DRAWING AND ITEMS SHOWN ON THIS DRAWING ARE SUBJECT TO CHANGE AT ANY TIME.

BANJO CORPORATION
 150 BANJO DRIVE, CRAWFORDSVILLE, IN 47933
 WEB SITE: WWW.BANJOCORP.COM
 E-MAIL: BANJOSALES@DEXCORP.COM

DESCRIPTION
3" POLY W/S PUMP ONLY FULL IMPELLER

PART NUMBER
300POW