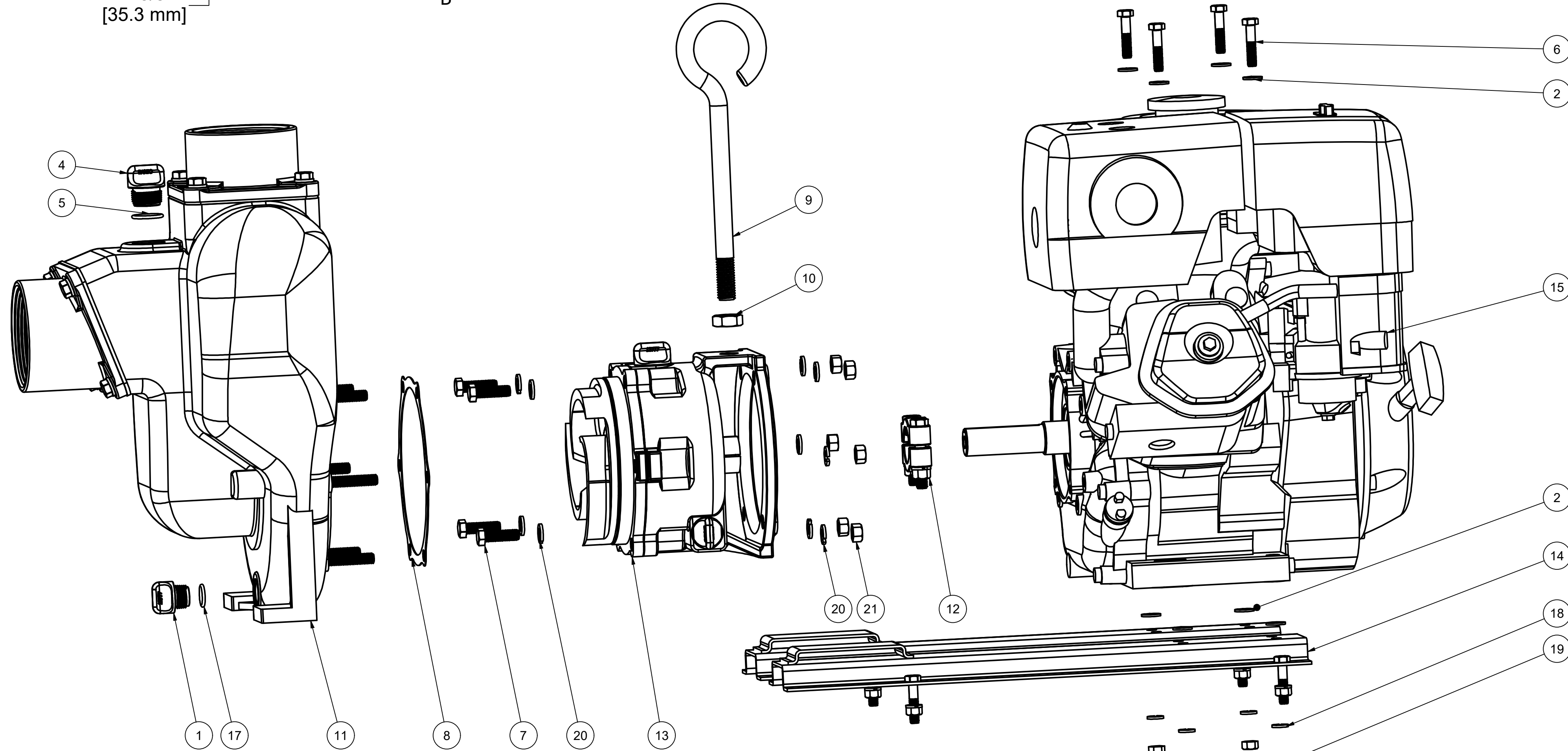
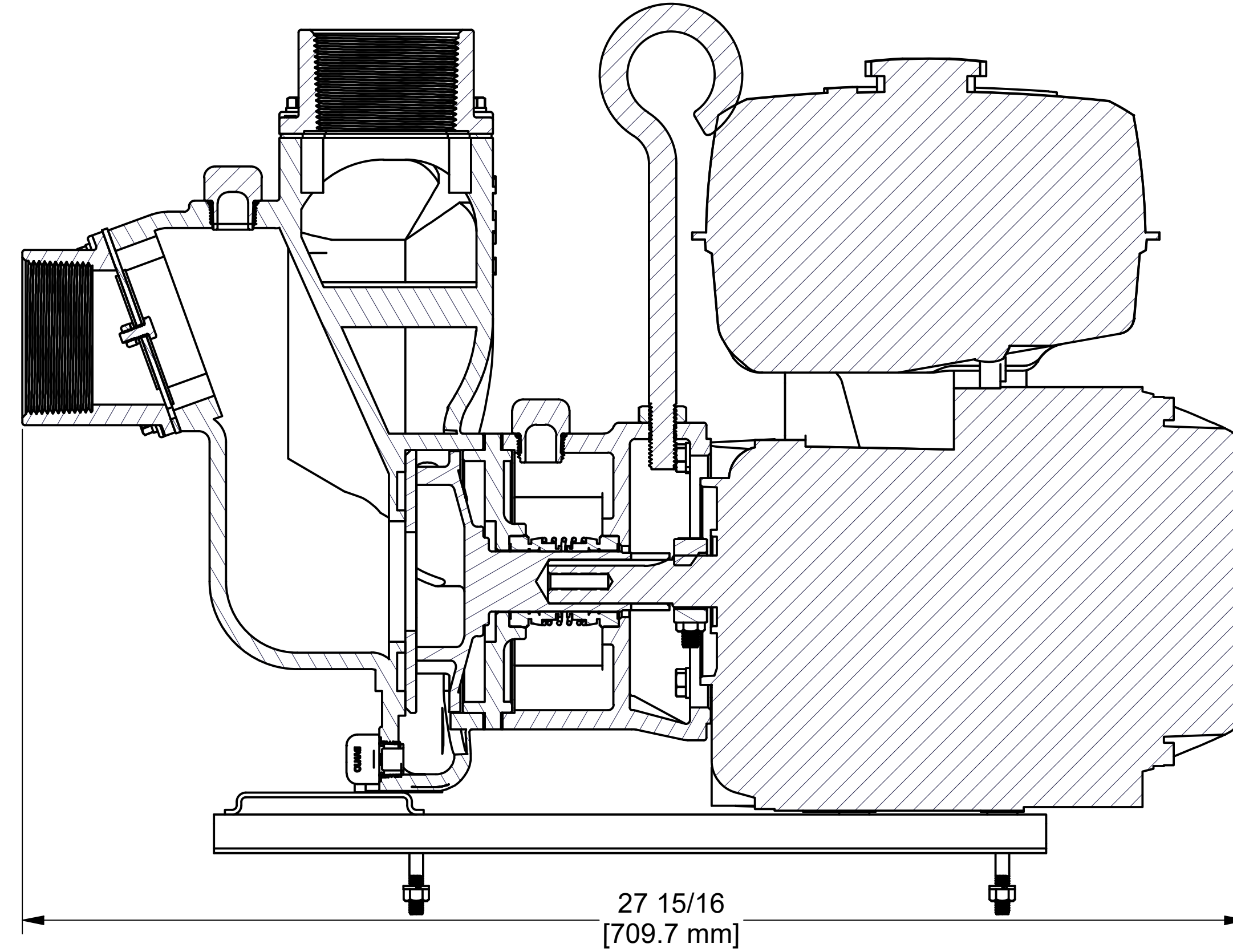
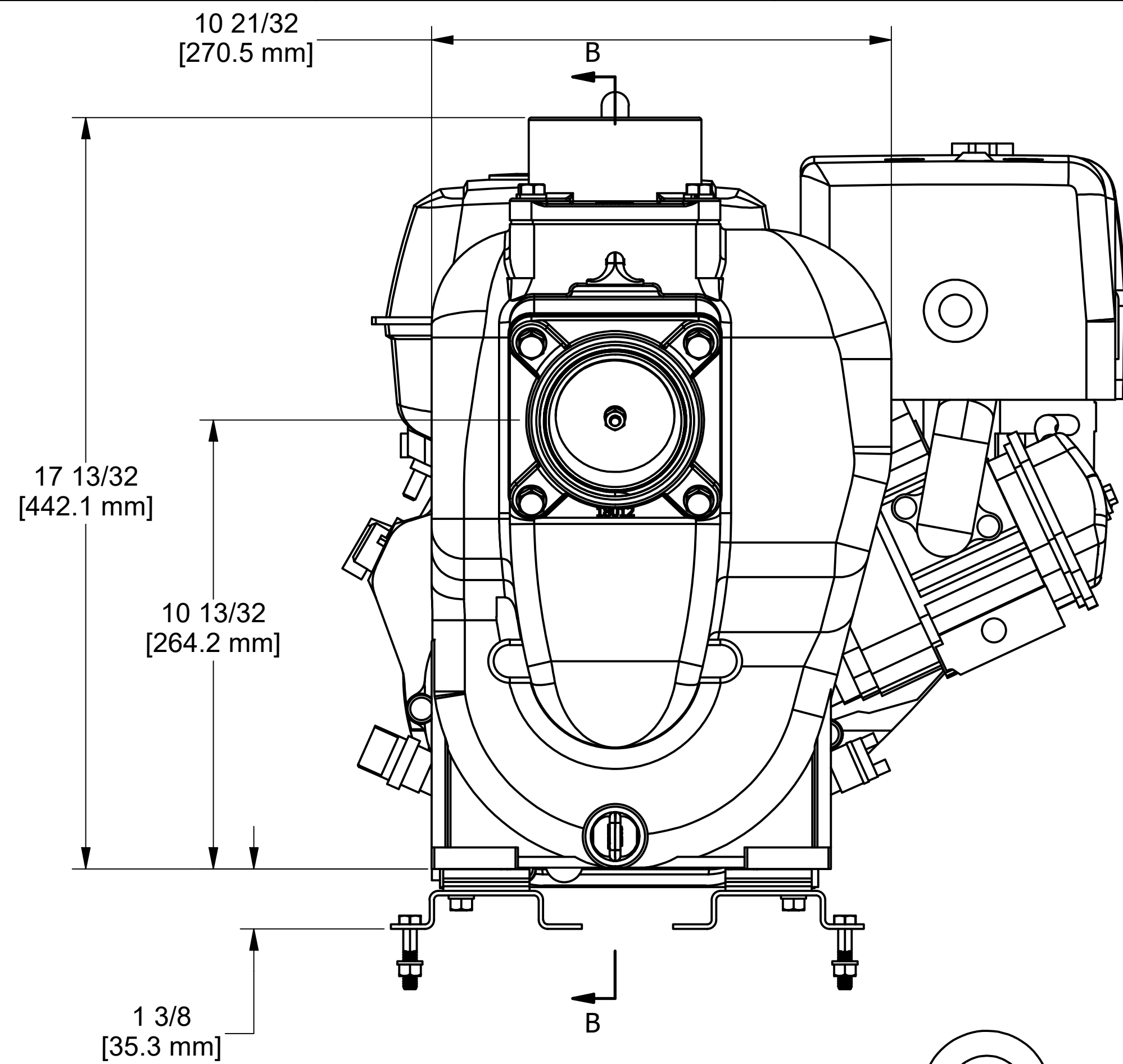


SECTION B-B
SCALE .4

PARTS LIST			
ITEM	QTY	PART NUMBER	DESCRIPTION
1	1	12777	1/2" DRAIN PLUG
2	8	12901	5/16" FLAT WASHER
3	1	12910	DECAL (N/S)
4	1	13777	3/4" DRAIN PLUG
5	1	13778	AS568A -119 O-RING, EPDM, BLACK
6	8	17034	5/16-18 X 1-1/2" HHCS
7	4	17704	3/8-16 X 1 1/4" HHCS
8	1	18021	PUMP ADAPTER GASKET
9	1	18033	PUMP HANDLE
10	1	18034	5/8-11 JAM NUT
11	1	18126	3" CI PUMP SUB-ASSEMBLY
12	1	18129	KEYED CLAMP ASSY.
13	1	18200A	3" WET SEAL ASSEMBLY NEW STYLE
14	1	18235	Z-RAIL (PAIR)
15	1	E13H	13 HP HONDA ENGINE
16	1	KK-57	WET SEAL WARNING TAG (N/S)
17	1	UV15163	AS568A -114 O-RING, EPDM, BROWN
18	8	V10118	5/16" LOCKWASHER
19	8	V10119	5/16" HEX NUT
20	10	V20018	3/8" LOCKWASHER
21	6	V20019	3/8" HEX NUT



THIS DRAWING AND ALL INFORMATION CONTAINED THEREON ARE THE EXCLUSIVE PROPERTY OF BANJO CORPORATION.

UNLESS SPECIFICALLY NOTED, THIS DRAWING AND ITEMS SHOWN ON THIS DRAWING ARE SUBJECT TO CHANGE AT ANY TIME.

BANJO CORPORATION
150 BANJO DRIVE, CRAWFORDSVILLE, IN 47933
WEB SITE: WWW.BANJO.CORP.COM
E-MAIL: BANJOSALES@DEXCORP.COM

DESCRIPTION
3" CI WET SEAL PUMP 13HP HONDA, NEW

PART NUMBER
301PIH13W