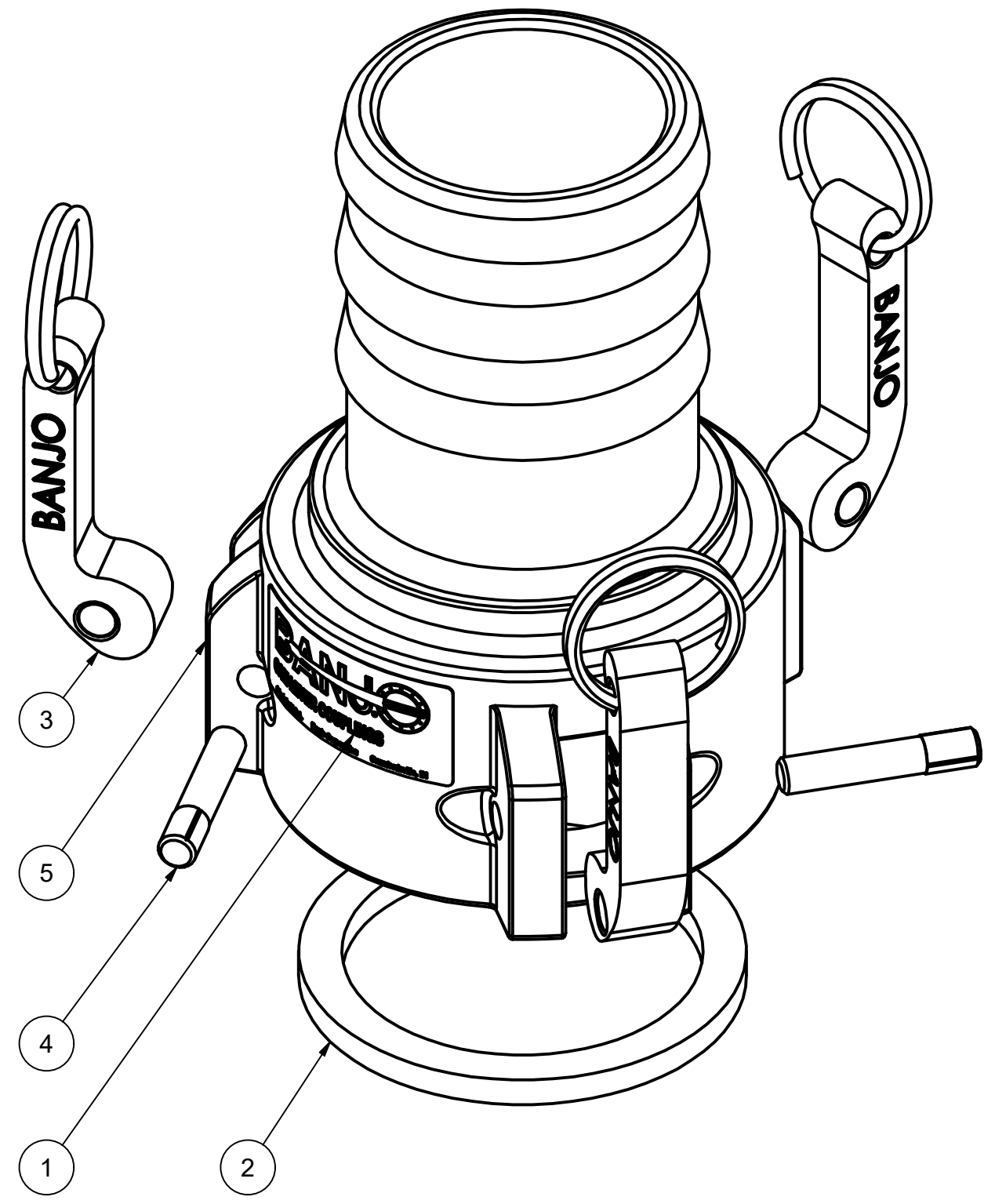
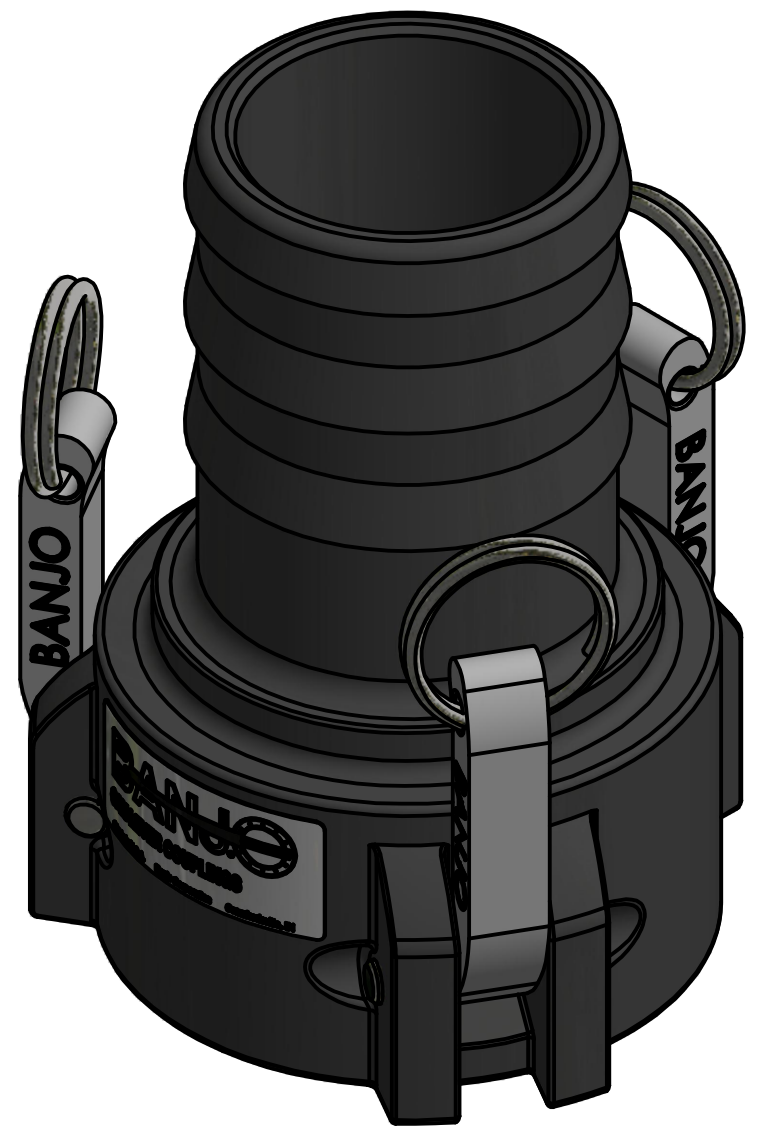
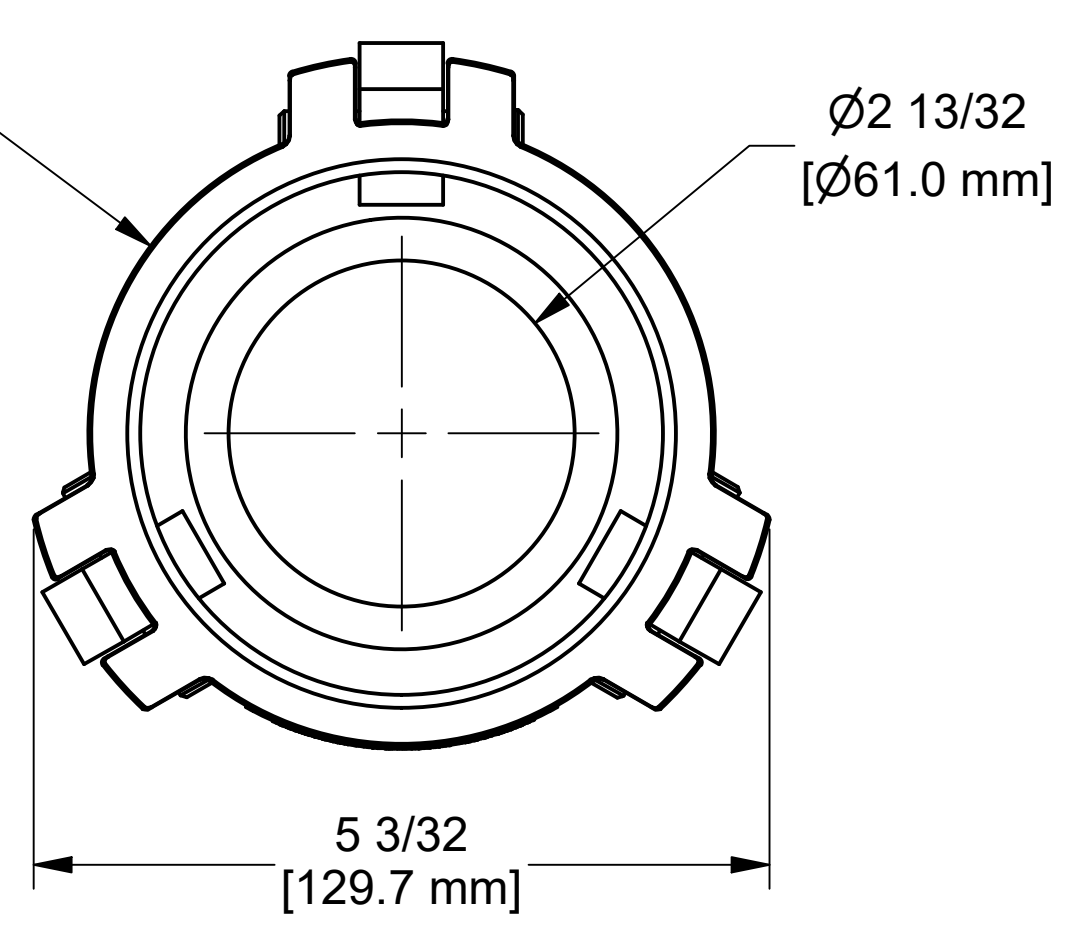
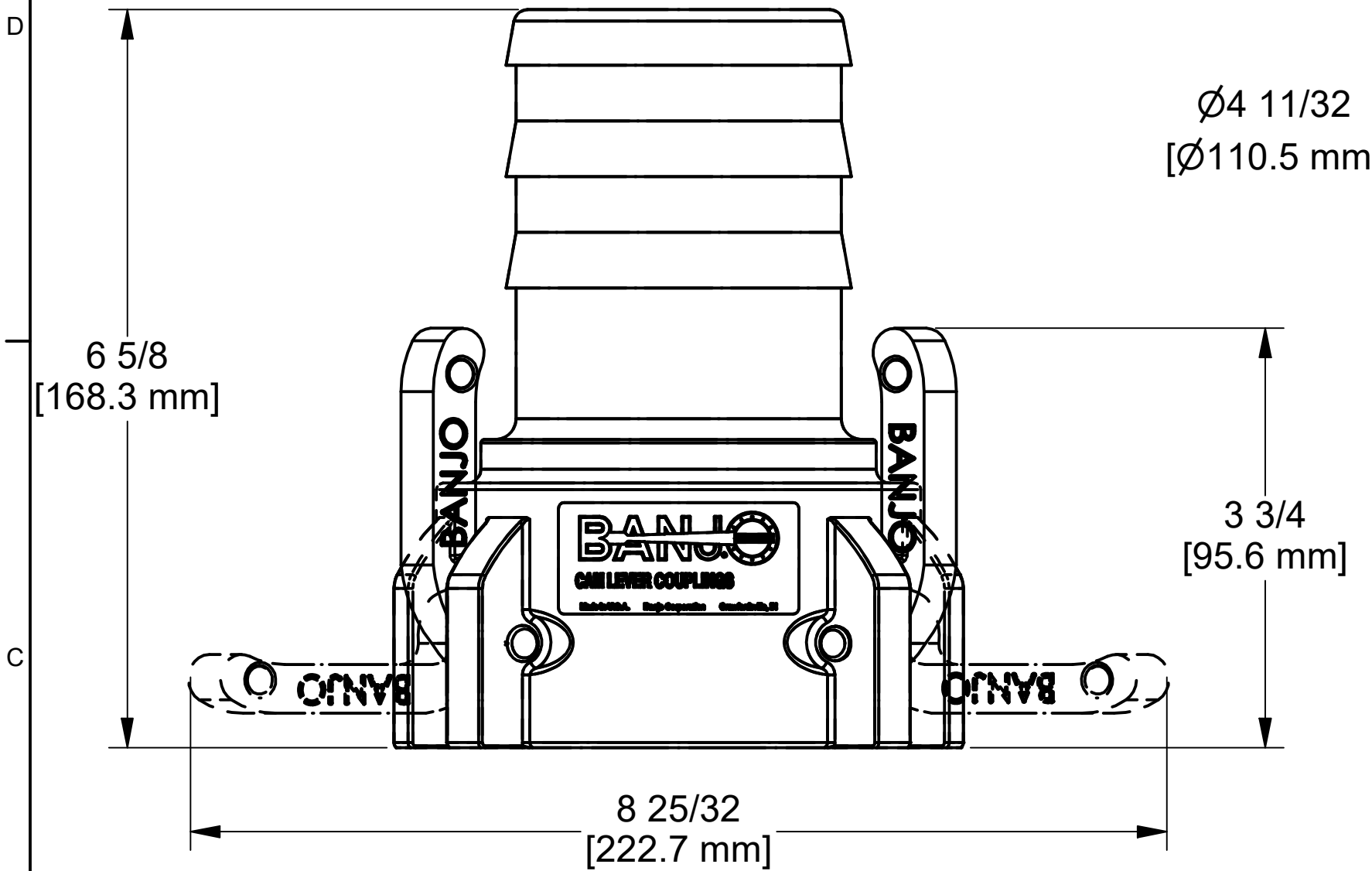


PARTS LIST

ITEM	QTY	PART NUMBER	DESCRIPTION
2	1	300G	3" COUPLING GASKET, EPDM
3	3	300K	CAM ARM
4	3	300P	CAM ARM PIN
5	1	303CX	3" 3-CAM FEMALE COUPLER X 3" MALE HOSE BARB, MOLDED



THIS DRAWING AND ALL INFORMATION CONTAINED THEREON ARE THE EXCLUSIVE PROPERTY OF BANJO CORPORATION.

BANJO CORPORATION
 150 BANJO DRIVE, CRAWFORDSVILLE, IN 47933
 WEB SITE: WWW.BANJOCORP.COM
 E-MAIL: BANJOSALES@IDEXCORP.COM

UNLESS SPECIFICALLY NOTED, THIS DRAWING AND ITEMS SHOWN ON THIS DRAWING ARE SUBJECT TO CHANGE AT ANY TIME.

DESCRIPTION	3" FEMALE COUPLER x 3" MALE HOSE BARB
PART NUMBER	303C