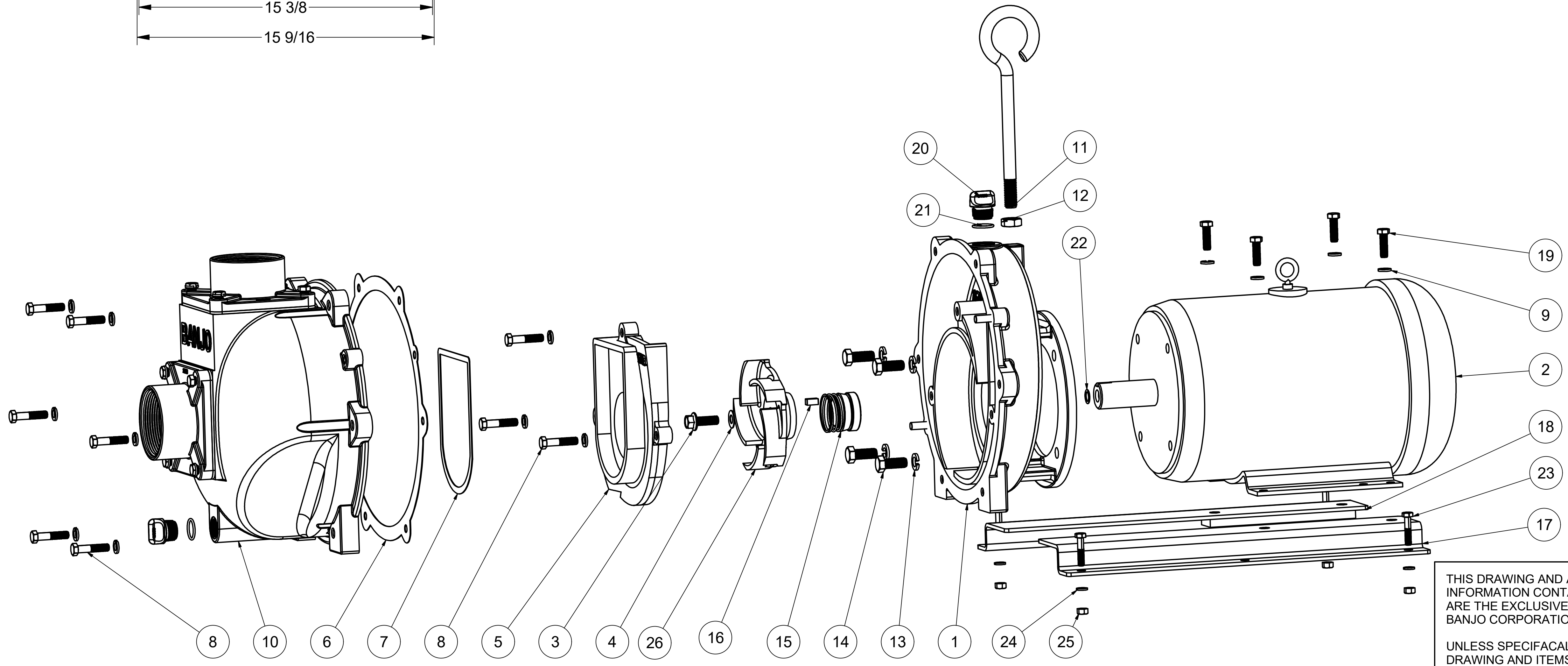



Parts List			
ITEM	QTY	PART NUMBER	DESCRIPTION
1	1	16704A	CI REAR BRKT W/ C-FACE ADPT
2	1	BEM15	15 HP ELEC. MTR.
3	1	16765	7/16-20 X 1 1/4" HFS
4	1	16019C	GASKET
5	1	16702	4" PUMP VOLUTE
6	1	16019A	GASKET
7	1	16019B	GASKET
8	9	V20011SS	3/8-16 X 1 3/4" HHCS
9	13	V20018	3/8" LOCKWASHER
10	1	16733	3" PUMP BODY ASSY.
11	1	18033	PUMP HANDLE
12	1	18034	5/8-11 JAM NUT
13	4	18058	1/2" LOCKWASHER
14	4	17449	1/2-13 X 1 1/4" HHCS
15	1	15025	MECH. SEAL ASSY.
16	1	17901	5/16" SQ X 5/8" KEY
17	1	15033A	Z-RAIL
18	1	15033B	Z-RAIL
19	4	17704	3/8-16 X 1 1/4" HHCS
20	2	13777	3/4" DRAIN PLUG
21	2	13778	#119 O'RING, EPDM
22	1	15752	IMPELLER SHIM
23	4	17034	5/16-18 X 1-1/2" HHCS
24	4	V10118	5/16" LOCKWASHER
25	4	V10119	5/16" HEX NUT
26	1	16774A	5 VANE TRIMMED IMPELLER



THIS DRAWING AND ALL INFORMATION CONTAINED THEREON ARE THE EXCLUSIVE PROPERTY OF BANJO CORPORATION.

UNLESS SPECIFICALLY NOTED, THIS DRAWING AND ITEMS SHOWN ON THIS DRAWING ARE SUBJECT TO CHANGE AT ANY TIME.



**BANJO CORPORATION**  
 150 BANJO DRIVE, CRAWFORDSVILLE, IN 47933  
 WEB SITE: WWW.BANJOCORP.COM  
 E-MAIL: SALES1@BANJOCORP.COM

DESCRIPTION  
**3" CI PUMP W/ 15HP ELEC. MTR.**

PART NUMBER  
**333PIE15**