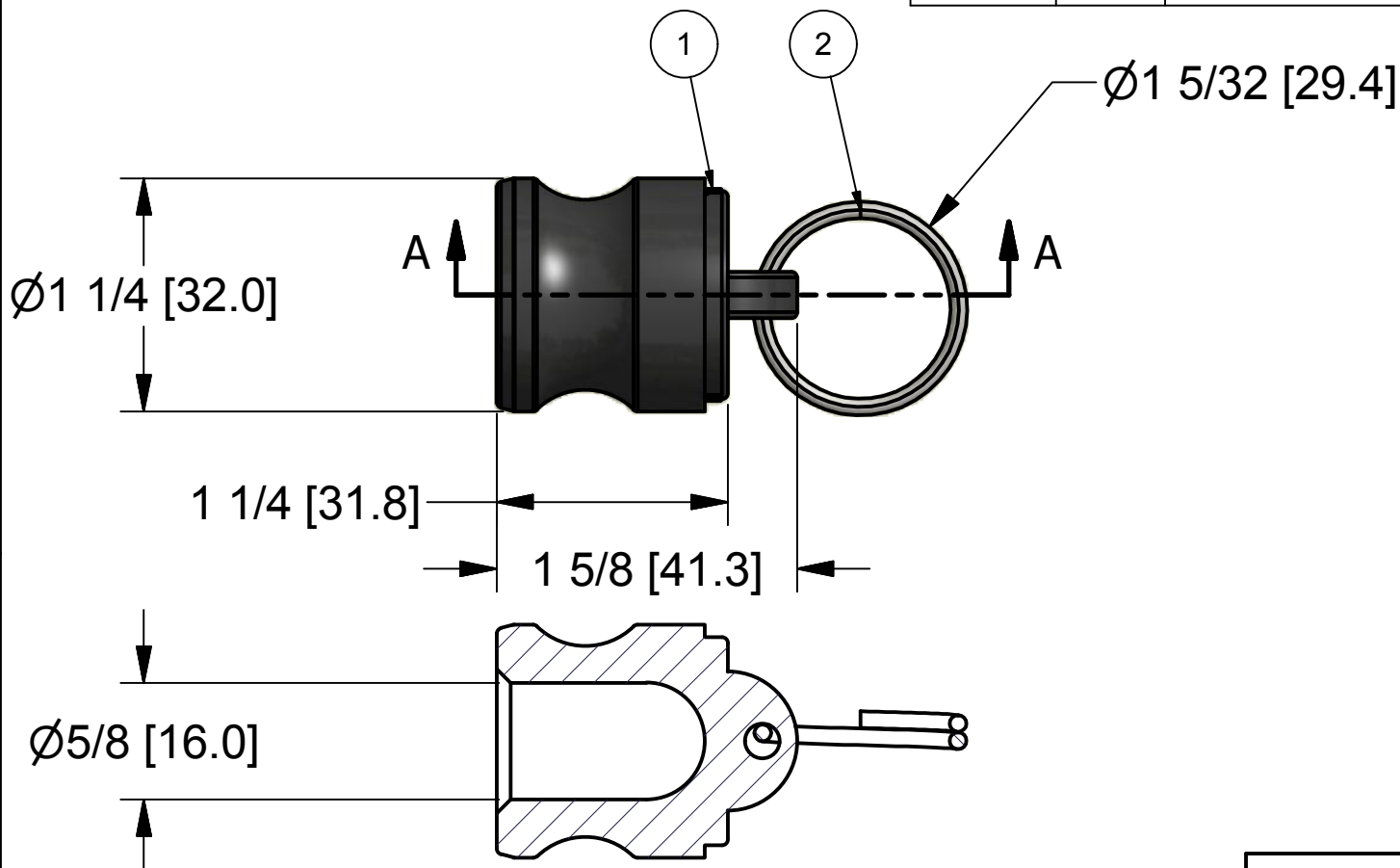


2

1

Parts List

| ITEM | QTY | PART NUMBER | DESCRIPTION |
|------|-----|-------------|-------------------|
| 1 | 1 | 75XPL | 3/4" Adapter Plug |
| 2 | 1 | 100RING | 1" CAM ARM RING |



BANJO CORPORATION
 150 BANJO DRIVE, CRAWFORDSVILLE, IN 47933
 WEB SITE: WWW.BANJOCORP.COM
 E-MAIL: BANJOSALES@IDEXCORP.COM

DESCRIPTION
 PLUG (FITS 1/2" & 3/4" CPLG'S)

PART NUMBER
 75PL

THIS DRAWING AND ALL INFORMATION CONTAINED THEREON ARE THE EXCLUSIVE PROPERTY OF BANJO CORPORATION.

UNLESS SPECIFICALLY NOTED, THIS DRAWING AND ITEMS SHOWN ON THIS DRAWING ARE SUBJECT TO CHANGE AT ANY TIME.