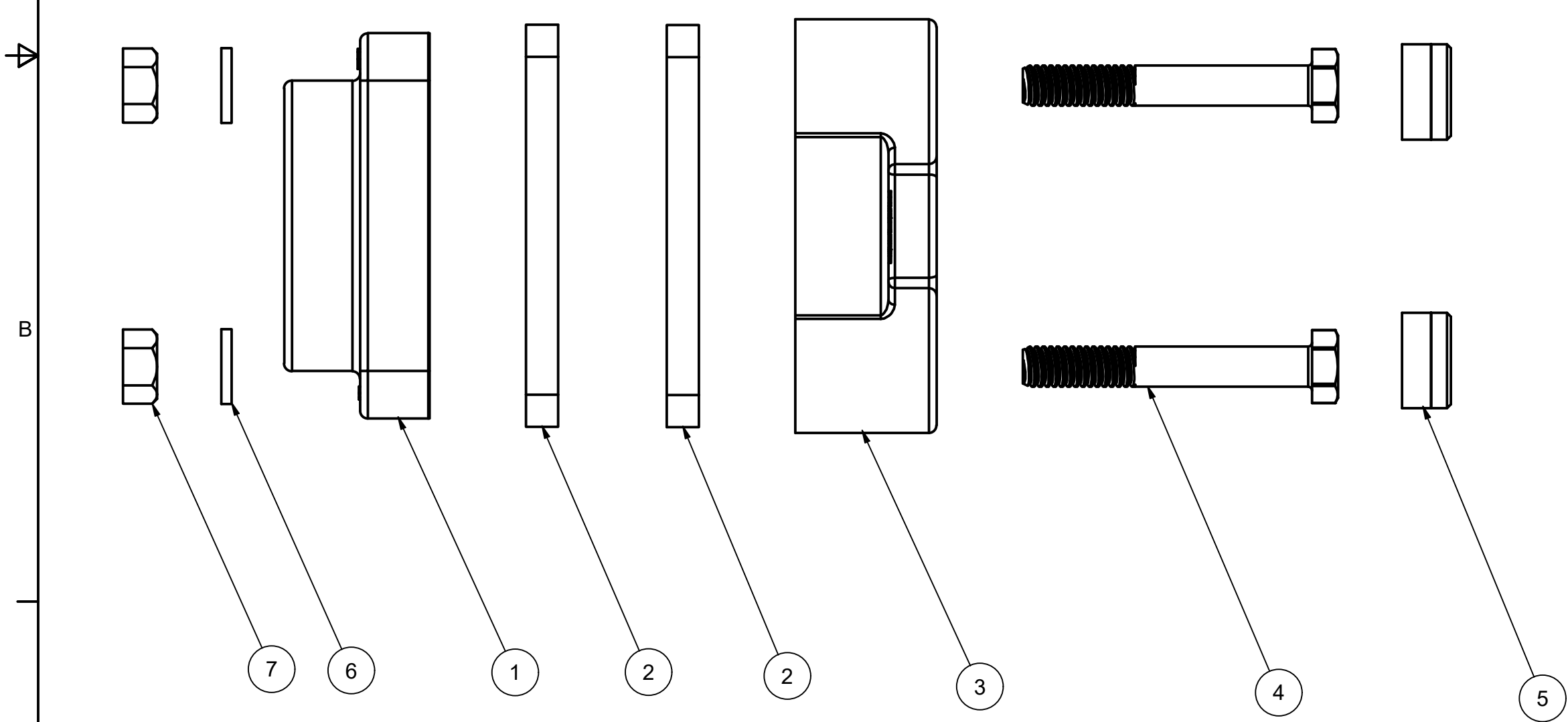
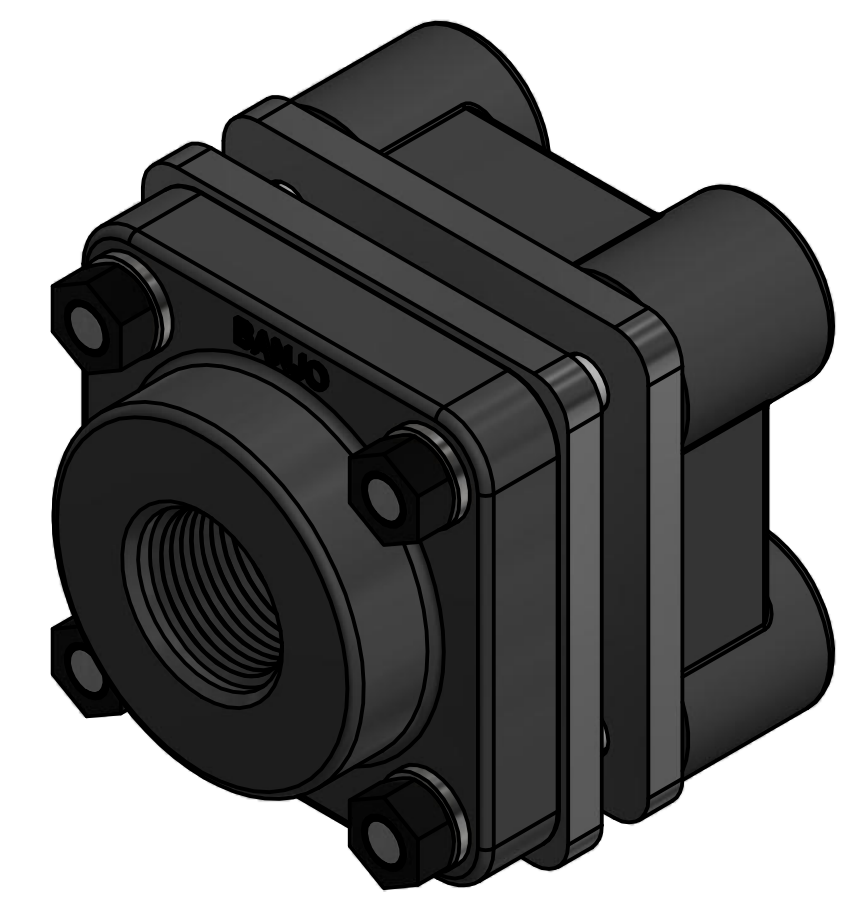



Parts List			
ITEM	QTY	PART NUMBER	DESCRIPTION
1	1	BF07357	3/4" B.F. END PLATE
2	2	BF100GE	1" B.F. GASKET
3	1	BF101	BOLTED FLANGE END PLATE
4	4	BF107	5/16-18 X 2 1/4" HHCS
5	4	BF304A	Bolted Flange Plug
6	4	V10118	5/16" LOCKWASHER
7	4	V10119	5/16" HEX NUT
8	1	VL1004	EPDM DECAL (N/S)





**BANJO**  
CORPORATION

BANJO CORPORATION  
 150 BANJO DRIVE, CRAWFORDSVILLE, IN 47933  
 WEB SITE: WWW.BANJOCORP.COM  
 E-MAIL: BANJOSALES@IDEXCORP.COM

DESCRIPTION	3/4" X 1" NPT BOLTED FLANGE, EPDM
PART NUMBER	<b>BF075</b>

THIS DRAWING AND ALL INFORMATION CONTAINED THEREON ARE THE EXCLUSIVE PROPERTY OF BANJO CORPORATION.

UNLESS SPECIFICALLY NOTED, THIS DRAWING AND ITEMS SHOWN ON THIS DRAWING ARE SUBJECT TO CHANGE AT ANY TIME.