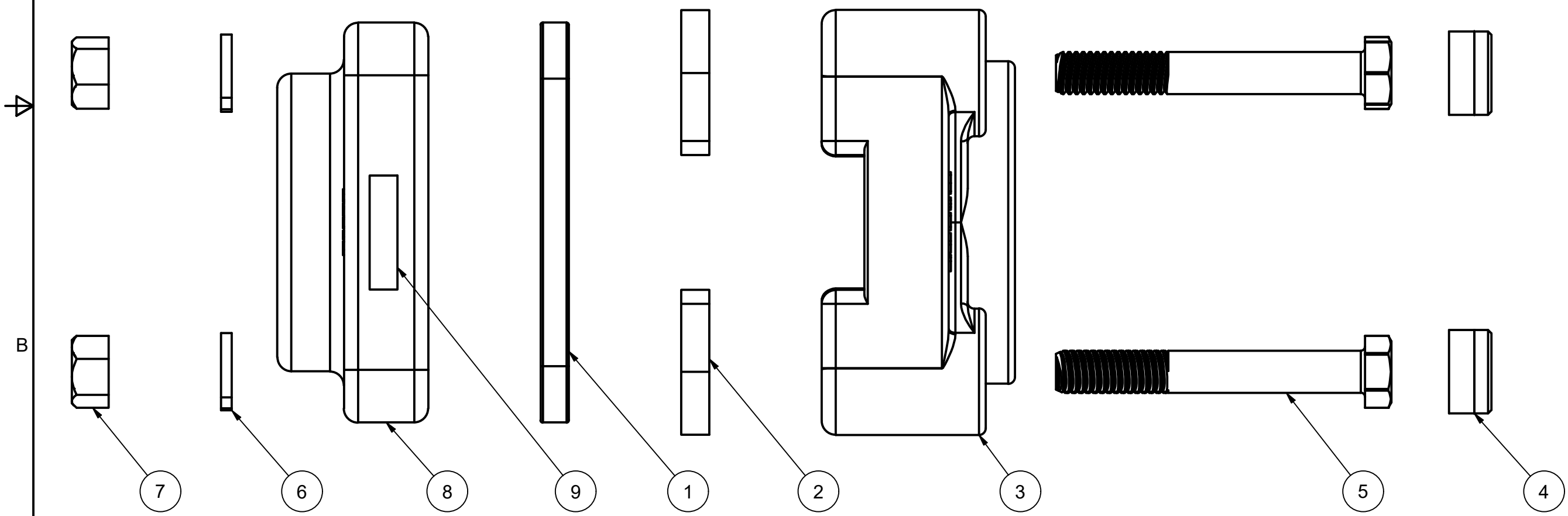



| Parts List | | | |
|------------|-----|-------------|-------------------------|
| ITEM | QTY | PART NUMBER | DESCRIPTION |
| 1 | 1 | BF200GE | 2" BOLTED FLANGE GASKET |
| 2 | 4 | BF200GFE | BOTTOM DRAIN GASKET |
| 3 | 1 | BF201BD | BOLTED FLANGE PLATE |
| 4 | 4 | BF304A | BOLTED FLANGE PLUG |
| 5 | 4 | BF306 | 3/8"-16 x 2.75" HHCS |
| 6 | 4 | V20018 | 3/8" LOCKWASHER |
| 7 | 4 | V20019 | 3/8" HEX NUT |
| 8 | 1 | V20157 | 1 1/2" END PLATE |
| 9 | 1 | VL1004 | EPDM DECAL |





BANJO
CORPORATION

BANJO CORPORATION
 150 BANJO DRIVE, CRAWFORDSVILLE, IN 47933
 WEB SITE: WWW.BANJOCORP.COM
 E-MAIL: BANJOSALES@IDEXCORP.COM

| | |
|-------------|--|
| DESCRIPTION | 1.5" X 2" NPT BOTTOM DRAIN BOLTED FLANGE, EPDM |
| PART NUMBER | BF150BD |

THIS DRAWING AND ALL INFORMATION CONTAINED THEREON ARE THE EXCLUSIVE PROPERTY OF BANJO CORPORATION.

UNLESS SPECIFICALLY NOTED, THIS DRAWING AND ITEMS SHOWN ON THIS DRAWING ARE SUBJECT TO CHANGE AT ANY TIME.