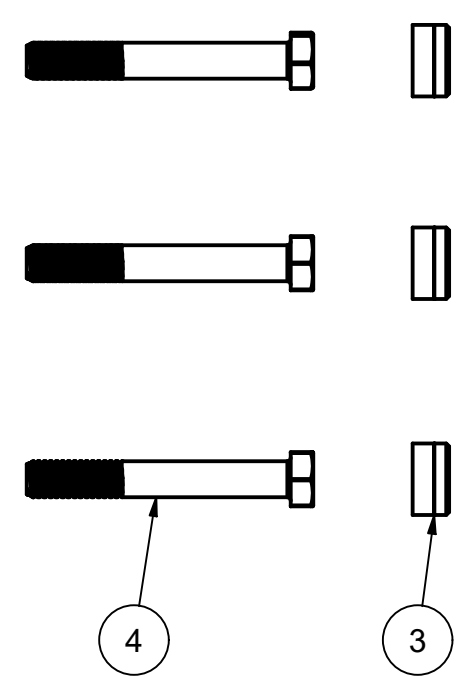
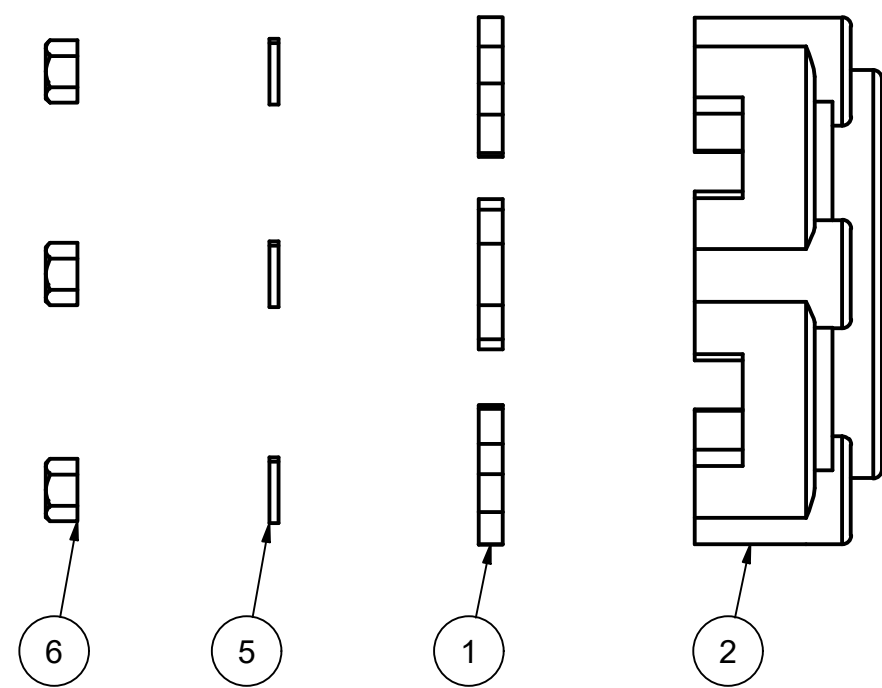
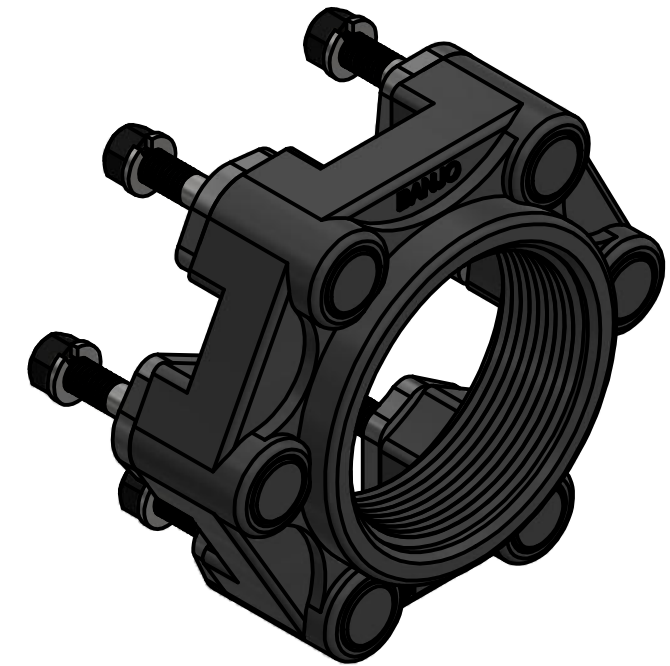


PART LIST			
ITEM	QTY	PART NUMBER	DESCRIPTION
1	6	BF300GFE	3" BOTTOM DRAIN GASKET
2	1	BF301BD	3" BOLTED FLG END PLATE
3	6	BF304A	BOLTED FLANGE PLUG
4	6	BF306	3/8"-16 x 2.75" HHCS
5	6	V20018	3/8" LOCKWASHER
6	6	V20019	3/8" HEX NUT



THIS DRAWING AND ALL INFORMATION CONTAINED THEREON ARE THE EXCLUSIVE PROPERTY OF BANJO CORPORATION.

UNLESS SPECIFICALLY NOTED, THIS DRAWING AND ITEMS SHOWN ON THIS DRAWING ARE SUBJECT TO CHANGE AT ANY TIME.

BANJO
CORPORATION

BANJO CORPORATION
150 BANJO DRIVE, CRAWFORDSVILLE, IN 47933
WEB SITE: WWW.BANJOCORP.COM
E-MAIL: BANJOSALES@IDEXCORP.COM

DESCRIPTION
3" NPT BOLTED INSIDE TANK FITTING ASSEMBLY

PART NUMBER
BF302BDA