

# DRY-MATE® DRY-DISCONNECTS

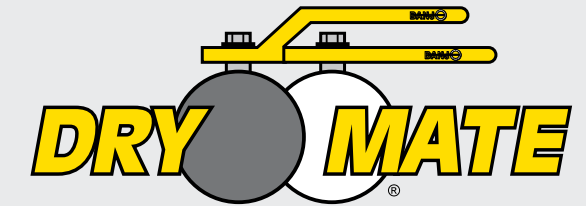
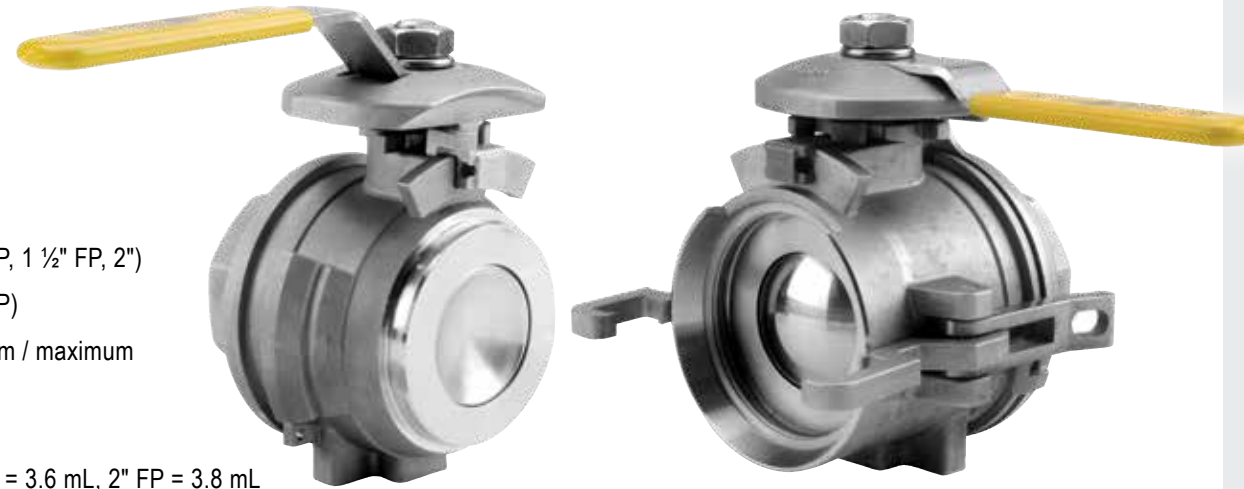


# DRY-MATE® SEALS TIGHT, MINIMIZING FLUID LOSS WHEN DISCONNECTING AND KEEPING COSTLY, POTENTIALLY HARMFUL PRODUCT WHERE IT BELONGS

## 316 STAINLESS STEEL DRY-MATE

### STAINLESS STEEL FEATURES

- 316 heavy duty stainless steel construction
- Size options: 1" FP, 1½" FP, 2" & 2" FP
- FKM, EPDM or Kalrez® face seals
- PTFE ball seats
- 150 PSI maximum operating pressure (1" FP, 1 ½" FP, 2")
- 300 PSI maximum operating pressure (2" FP)
- -20°F @ 70 PSI & 300°F @ 70 PSI minimum / maximum operating temperatures
- Available in manifold flange connections
- Spillage: 1" FP = 1.7 mL, 1½" FP = 3 mL, 2" = 3.6 mL, 2" FP = 3.8 mL



### SAFETY FIRST

Product is important, but the safety of your workers is essential. With Dry-Mate Dry-Disconnects, leakage from disconnecting is miniscule compared to standard valves. When properly installed and operated, the danger posed by harmful chemicals contacting your workers is greatly reduced.

### EVERY DROP COUNTS

Your product is money. Why waste money in spilling your product every time you disconnect? With Dry-Mate, your spillage amount will be significantly reduced. At 3 mL product spillage for a 2" line, you can have peace of mind that your product is being placed where it should be and not on the ground.

### PRODUCT ONLY WHERE YOU WANT IT

When a Dry-Mate is properly installed and operated, the assembly will not accidentally separate while fluid is flowing; preventing costly mishaps.

### DITCH THE MAINTENANCE

All that spillage has to go somewhere. If you are collecting large areas of spillage run-off, you have to have it pumped out. Reduce your maintenance costs on your spillage pits by keeping fluids contained.

Kalrez® is a registered trademark of E.I. du Pont de Nemours and company.

FP= Full Port

## POLYPROPYLENE DRY-MATE

### POLYPROPYLENE FEATURES

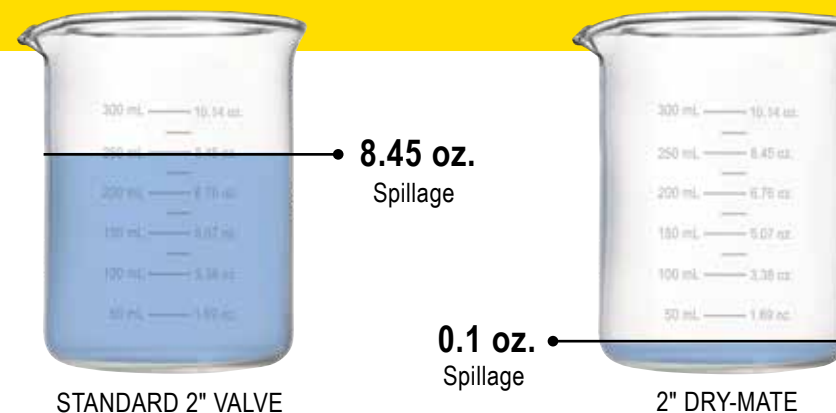
- Lightweight
- Size options: 1½" FP, 2", 2" FP & 3" FP
- Wide range of chemical resistances
- FKM, EPDM or Kalrez® face seals
- 100 PSI maximum operating pressure (1 ½" FP, 2")
- 225 PSI maximum operating pressure (2" FP)
- 150 PSI maximum operating pressure (3" FP)
- -20°F @ 70 PSI & 150°F @ 70 PSI minimum / maximum operating temperatures
- Available in manifold flange connections
- Spillage: 1½" FP = 2 mL, 2" = 2.6 mL, 2" FP = 3.6 mL, 3" FP = 20 mL



## NOT YOUR TYPICAL SPILLAGE

### 99% SPILLAGE REDUCTION

- Reduction of typical spillage using standard 2" valve with cam lock connection vs. Dry-Mate
- 8.45 oz. (250 mL) vs. 0.1 oz. (3 mL) spillage
- At five disconnections per day, this is **over 118 gallons (450 liters) saved per year**; enough to fill the gas tanks of eight mid-size automobiles






C O N N E C T W I T H C O N F I D E N C E™



# DRY-MATE® OFFERS A VARIETY OF CHEMICAL RESISTANCE, SIZING, AND DURABILITY OPTIONS THAT SUPPORT YOUR BUDGET

## DRY-MATE MODEL CHART

		DRY-MATE MODELS					
		1" FULL PORT	1½" FULL PORT	2" STANDARD PORT	2" FULL PORT	3" FULL PORT	
DRY-MATE OPTIONS	POLYPROPYLENE		X	✓	✓	✓	✓
	STAINLESS STEEL		✓	✓	✓	✓	X

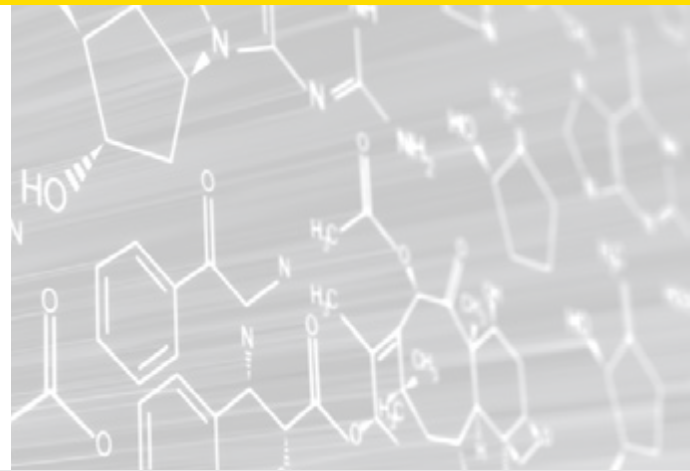
## CHEMICAL RESISTANCE CHART



### SELECT PROPER VALVE MATERIAL

To view a full listing of our Chemical Resistance Chart, scan this QR code or visit:

[BanjoCorp.com/ChemicalResistanceChart](http://BanjoCorp.com/ChemicalResistanceChart)



**BANJO CORPORATION**  
 A Unit of IDEX Corporation  
 150 Banjo Drive  
 Crawfordsville, IN 47933 U.S.A.  
 Telephone: (765) 362-7367  
 Fax: (765) 362-0744  
[banjocorp.com](http://banjocorp.com)

To learn more about our Dry-Disconnect product line, scan this QR code or visit:



[BanjoCorp.com/DryDisconnects](http://BanjoCorp.com/DryDisconnects)

