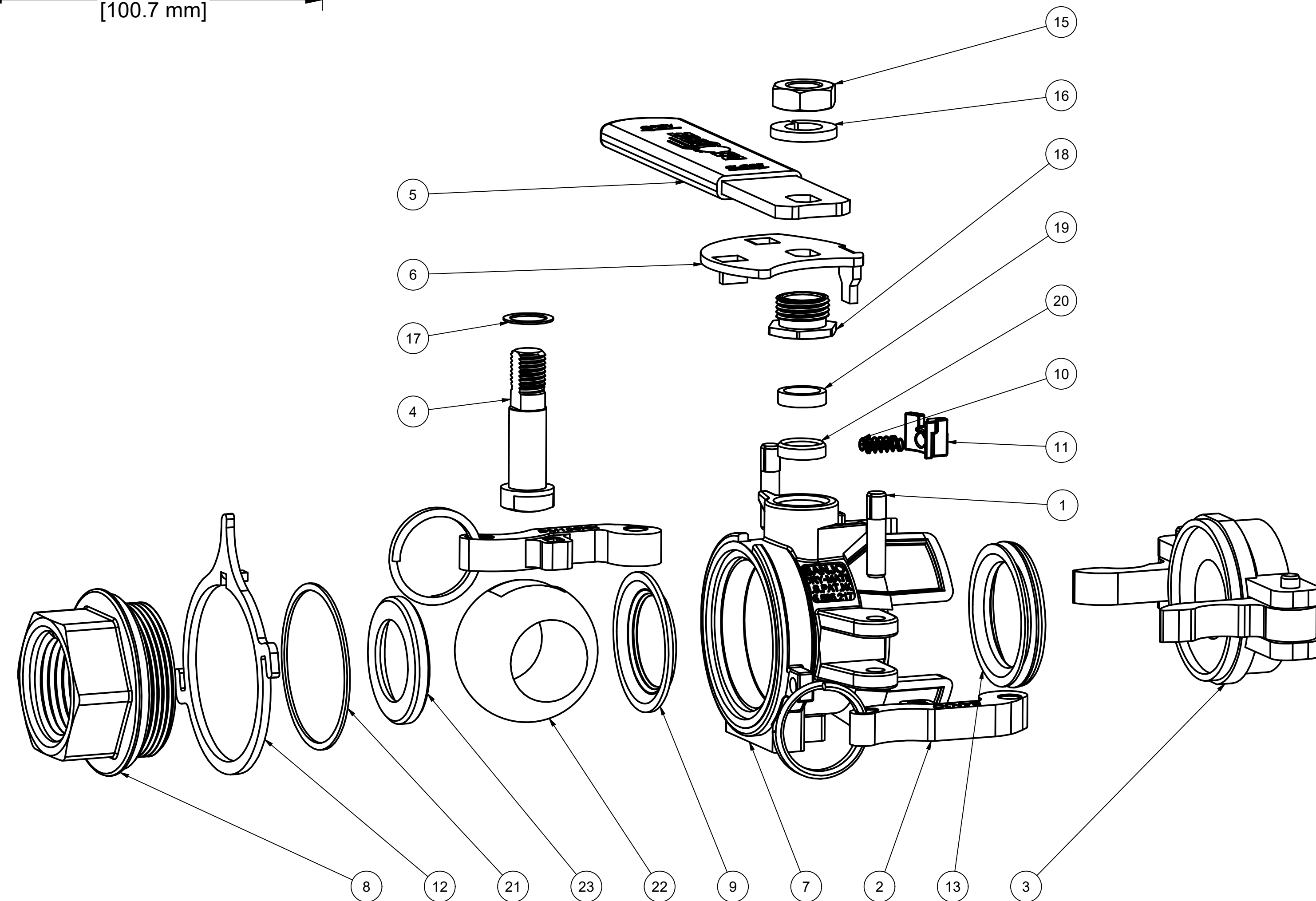
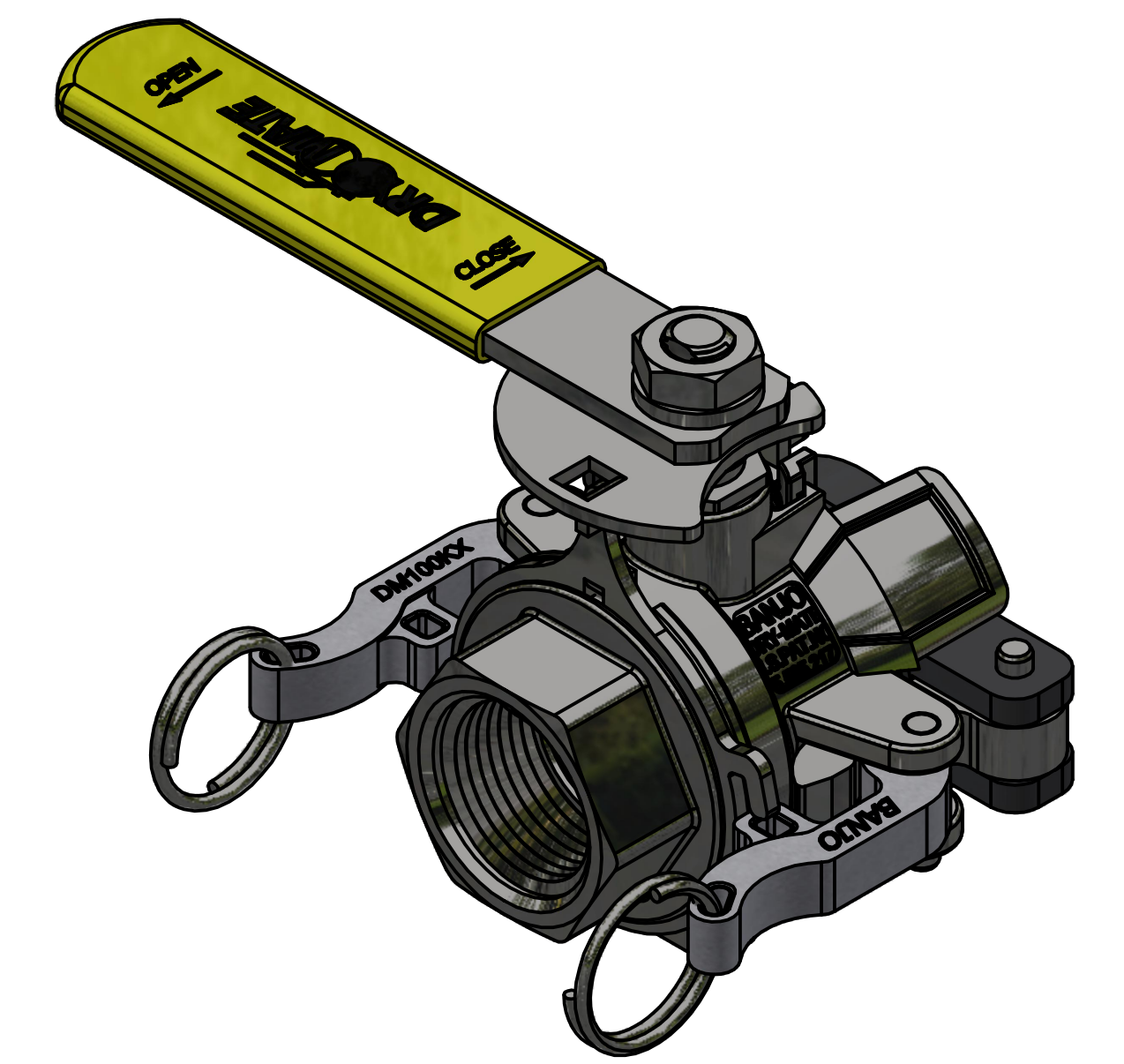


SECTION B-B
SCALE 1 : 1



| PARTS LIST | | | |
|------------|--------|-------------|-----------------------------------|
| ITEM | QTY | PART NUMBER | DESCRIPTION |
| 1 | 2 | 100P | PIN |
| 2 | 2 | DM100K | 1" DRY MATE CAM ARM-ASSEMBLED |
| 3 | 1 | DM100PL | 1" DRY MATE PLUG |
| 4 | 1 | DM10151SS | 1" Dry Mate Stem |
| 5 | 1 | DM10153FSS | DM100SS INTERLOCK CAM, FEMALE |
| 6 | 1 | DM10154SS | DM100SS INTERLOCK CAM, FEMALE |
| 7 | 1 | DM10254FSS | 1" SS Female Dry Mate Body |
| 8 | 1 | DM10256BSS | 1" DRYMATE FEMALE BSPP ENDPLATE |
| 9 | 1 | DM10258 | 1" Drymate Teflon Seat |
| 10 | 2 | DM10281 | SS Spring |
| 11 | 1 | DM10288SS | 1" DRYMAT HANDLE INTERLOCK BUTTON |
| 12 | 1 | DM10289SS | 1" DRYMATE LOCKING YOKE |
| 13 | 1 | DM10295A | 1" Drymate Seal |
| 14 | 1 (NS) | V20207A | Polyurethane Lanyard |
| 15 | 1 | VSS10020 | 7/16" - 20 18-8SS Jam Nut |
| 16 | 1 | VSS10021 | 7/16" Lockwasher |
| 17 | 1 | VSS10060 | 1" SS Thrust Washer |
| 18 | 1 | VSS10159 | 1" SS GLAND NUT |
| 19 | 1 | VSS10160F | Female Stem Packing |
| 20 | 1 | VSS10160M | Male Stem Packing |
| 21 | 1 | VSS10204 | 1" SS Body Gasket |
| 22 | 1 | VSS10255 | 1" SS Ball |
| 23 | 1 | VSS10258 | 1" SS Valve Seat |



THIS DRAWING AND ALL INFORMATION CONTAINED THEREON ARE THE EXCLUSIVE PROPERTY OF BANJO CORPORATION.

UNLESS SPECIFICALLY NOTED, THIS DRAWING AND ITEMS SHOWN ON THIS DRAWING ARE SUBJECT TO CHANGE AT ANY TIME.

BANJO CORPORATION
150 BANJO DRIVE, CRAWFORDSVILLE, IN 47933
WEB SITE: WWW.BANJO.CORP.COM
E-MAIL: BANJOSALES@IDEXCORP.COM

DESCRIPTION
1" FEMALE BSPP SS-EPDM FACE SEAL

PART NUMBER
DM100DBSSE