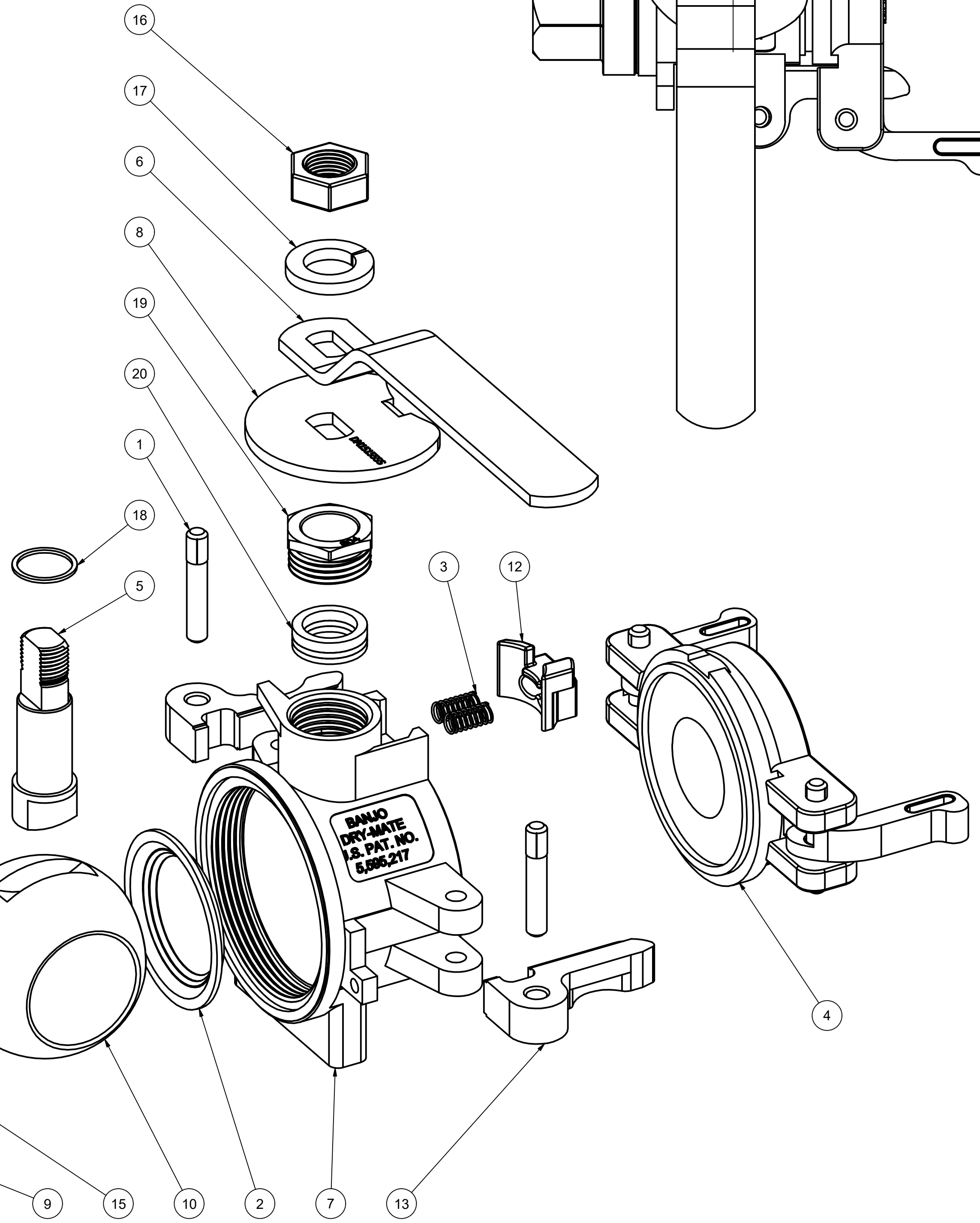
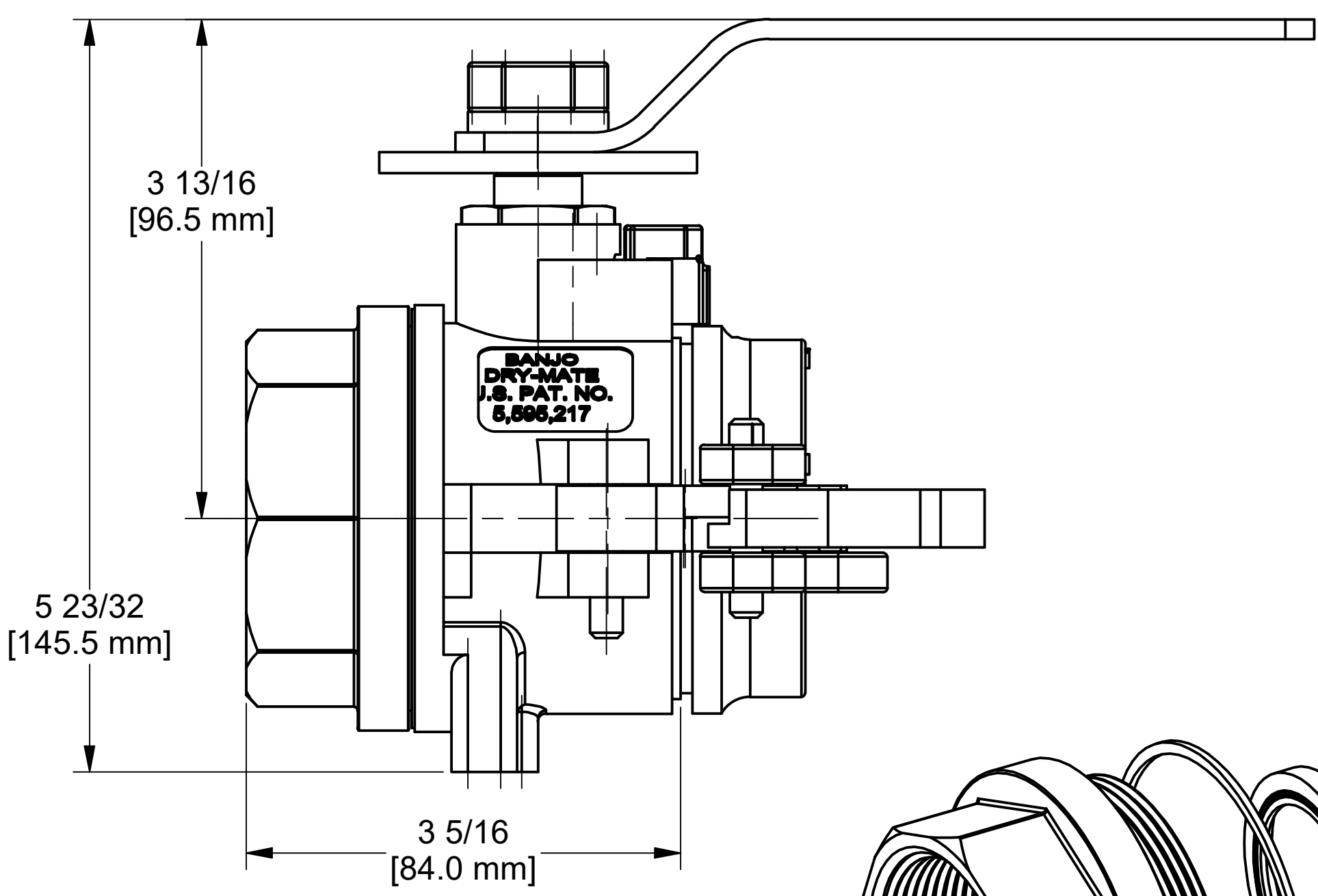
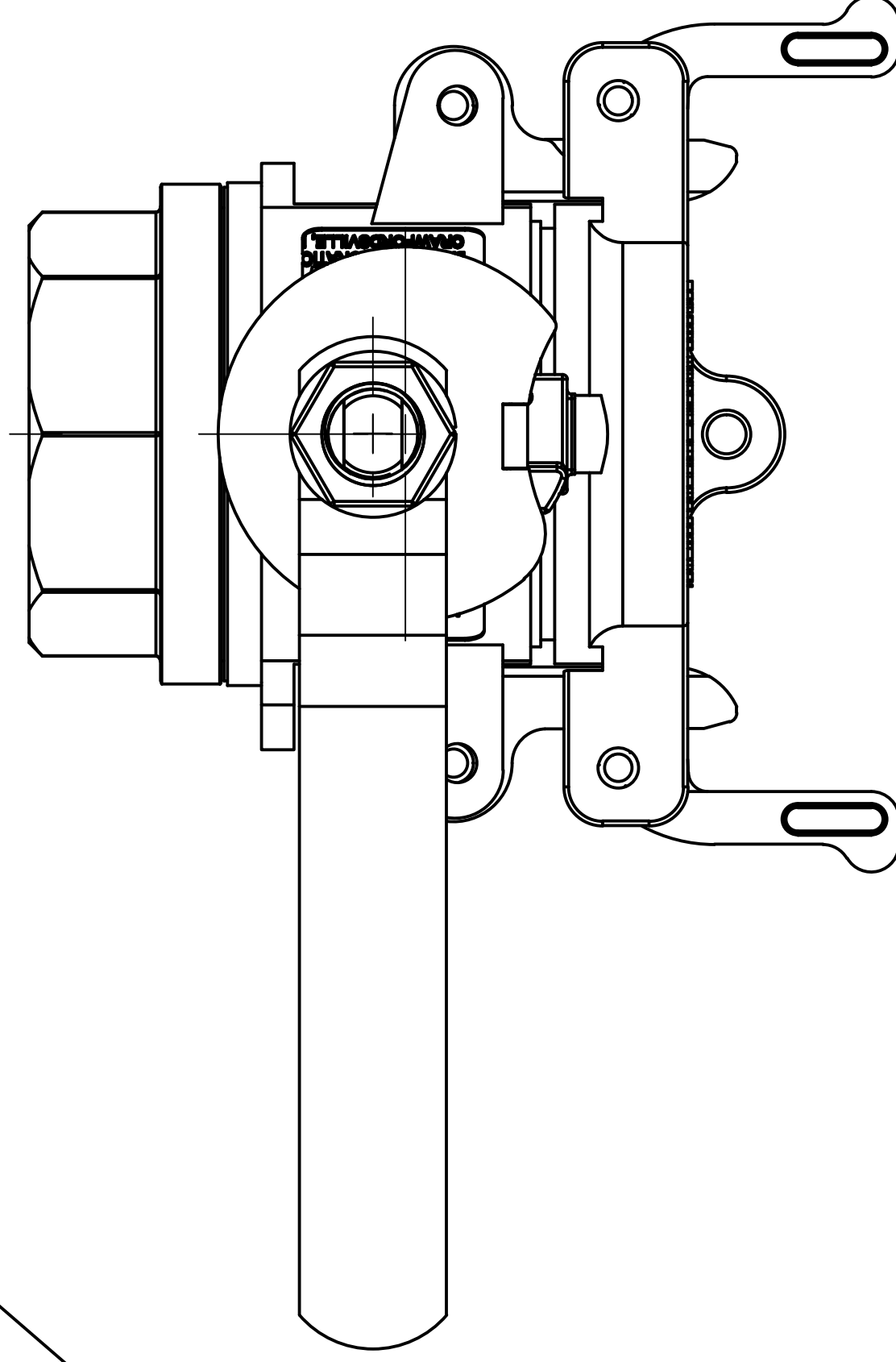
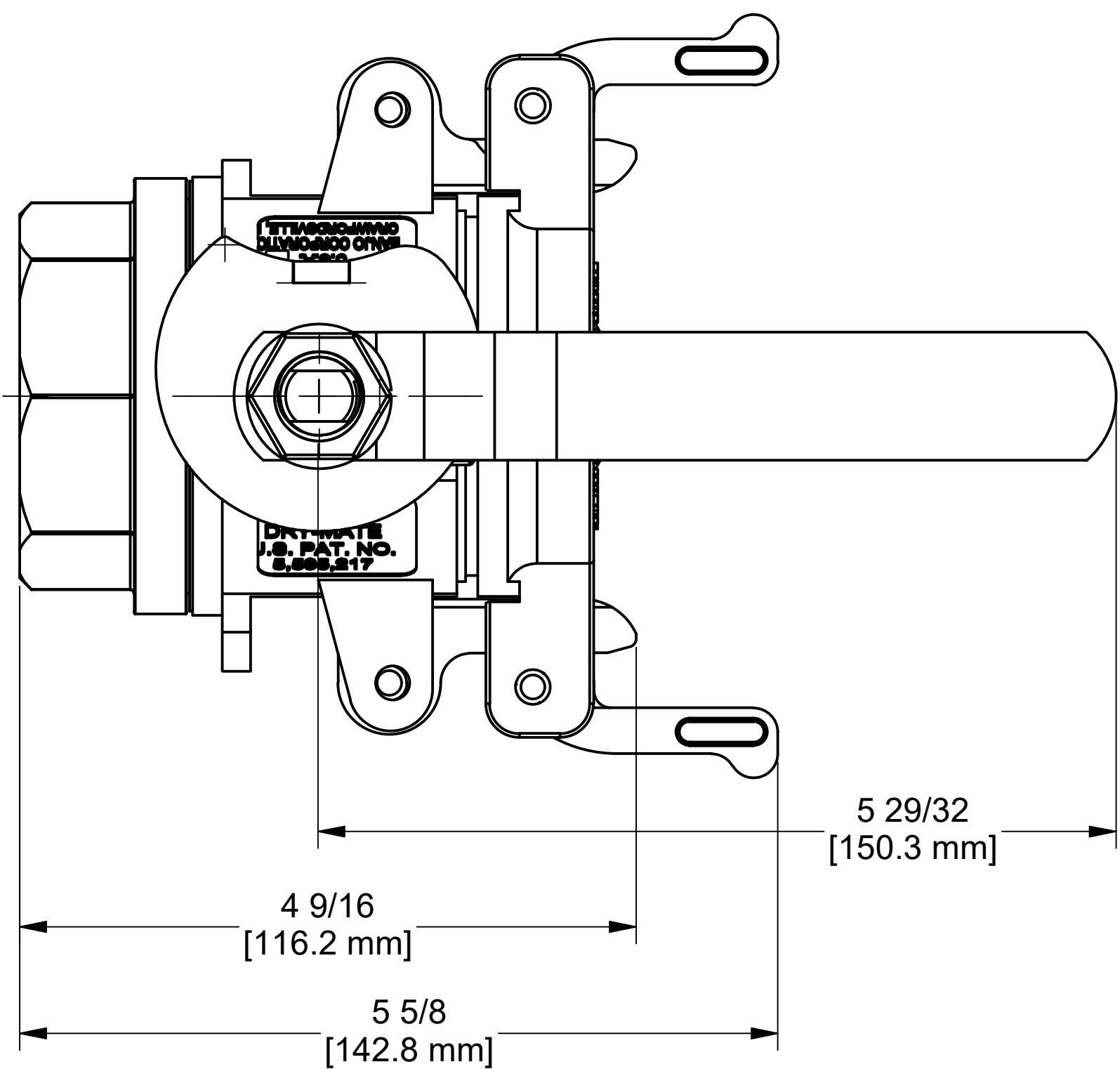
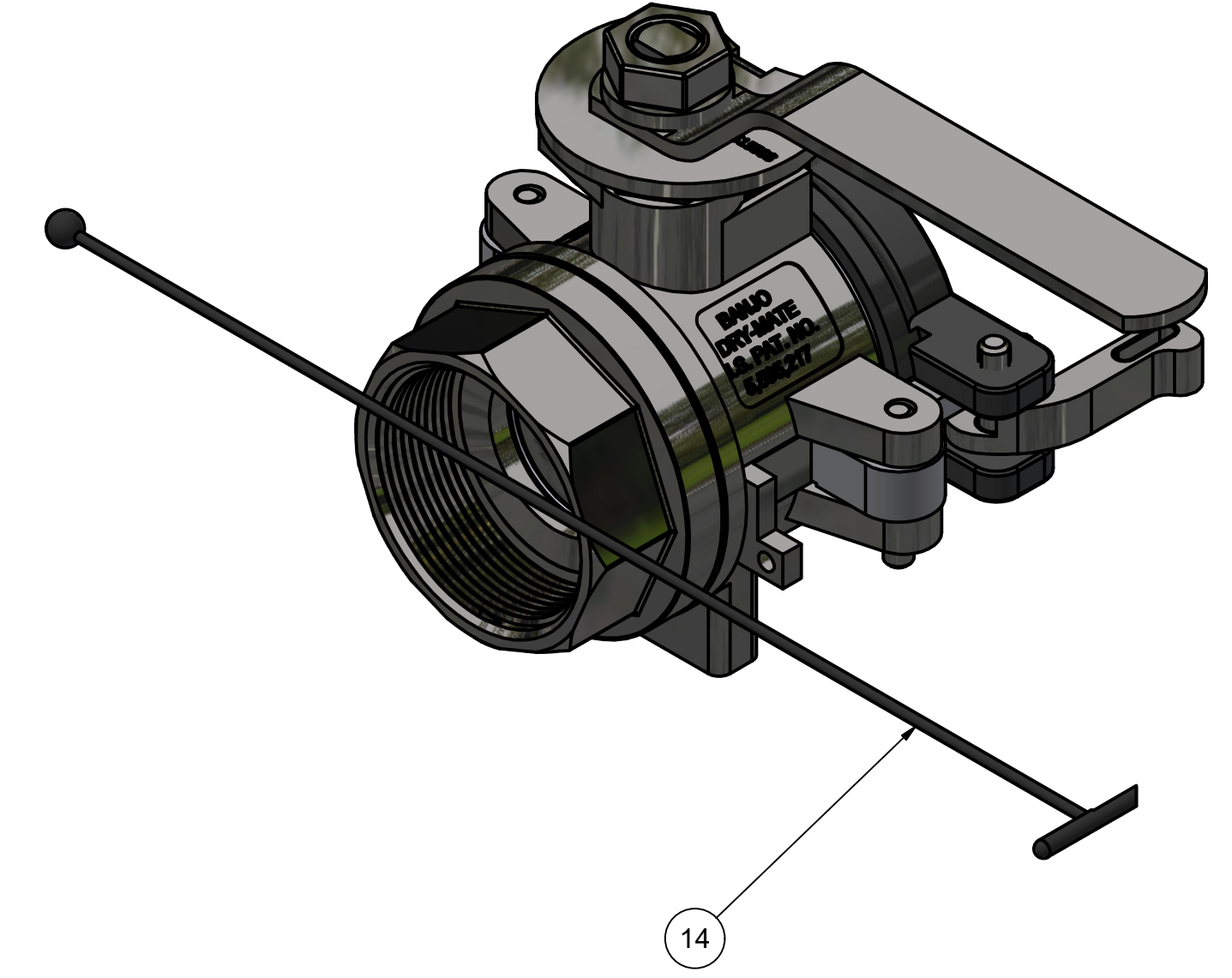


HANDLE IN OPEN POSITION

HANDLE IN CLOSED POSITION



PARTS LIST			
ITEM	QTY	PART NUMBER	DESCRIPTION
1	2	200P	CAM ARM PIN, FOR 1-1/2" & 2" CAM COUPLERS
2	1	DB20258	2" DRYMATE SEAT, PTFE
3	2	DB20281	DRY MATE HANDLE INTERLOCK SPRING
4	1	DM200ACAP	2" DRYMATE CAP ASSY
5	1	DM15151SS	1 1/2" SS DM Stem
6	1	DM15153SS	2" Dry Mate Male Handle
7	1	DM15154MSS	1-1/2" & 2" MALE DRYMATE BODY, MACHINED
8	1	DM15155SS	DM200SS INTERLOCK CAM, MALE
9	1	DM15204SS	DM150 BODY GASKET
10	1	DM15255MSS	1 1/2" Male Dry Mate Ball
11	1	DM15256MBSS	2" FNPT MALE SS DRYMATE ENDPLATE
12	1	DM15288SS	ANTI ROTATION BUTTON 316SS
13	2	DM20300	2" DRYMATE PROFILE INSERT
14	1	V20207A	Polyurethane Lanyard
15	1	V20258	2" VALVE BALL SEAT
16	1	VSS15020	5/8"-18 SS JAM NUT
17	1	VSS15021	5/8" LOCKWASHER
18	1	VSS15060	THRUST WASHER, ID 0.676", PTFE
19	1	VSS15159	1 1/2" SS GLAND NUT
20	1	VSS15160	2" SS DM V-PACKING



THIS DRAWING AND ALL INFORMATION CONTAINED THEREON ARE THE EXCLUSIVE PROPERTY OF BANJO CORPORATION.

UNLESS SPECIFICALLY NOTED, THIS DRAWING AND ITEMS SHOWN ON THIS DRAWING ARE SUBJECT TO CHANGE AT ANY TIME.

BANJO CORPORATION
 150 BANJO DRIVE, CRAWFORDSVILLE, IN 47933
 WEB SITE: WWW.BANJO.CORP.COM
 E-MAIL: BANJOSALES@IDEXCORP.COM

DESCRIPTION
 2" SS SP MALE x FEMALE BSPP w/ PTFE SEALS

PART NUMBER
 DM200ABSS