

4

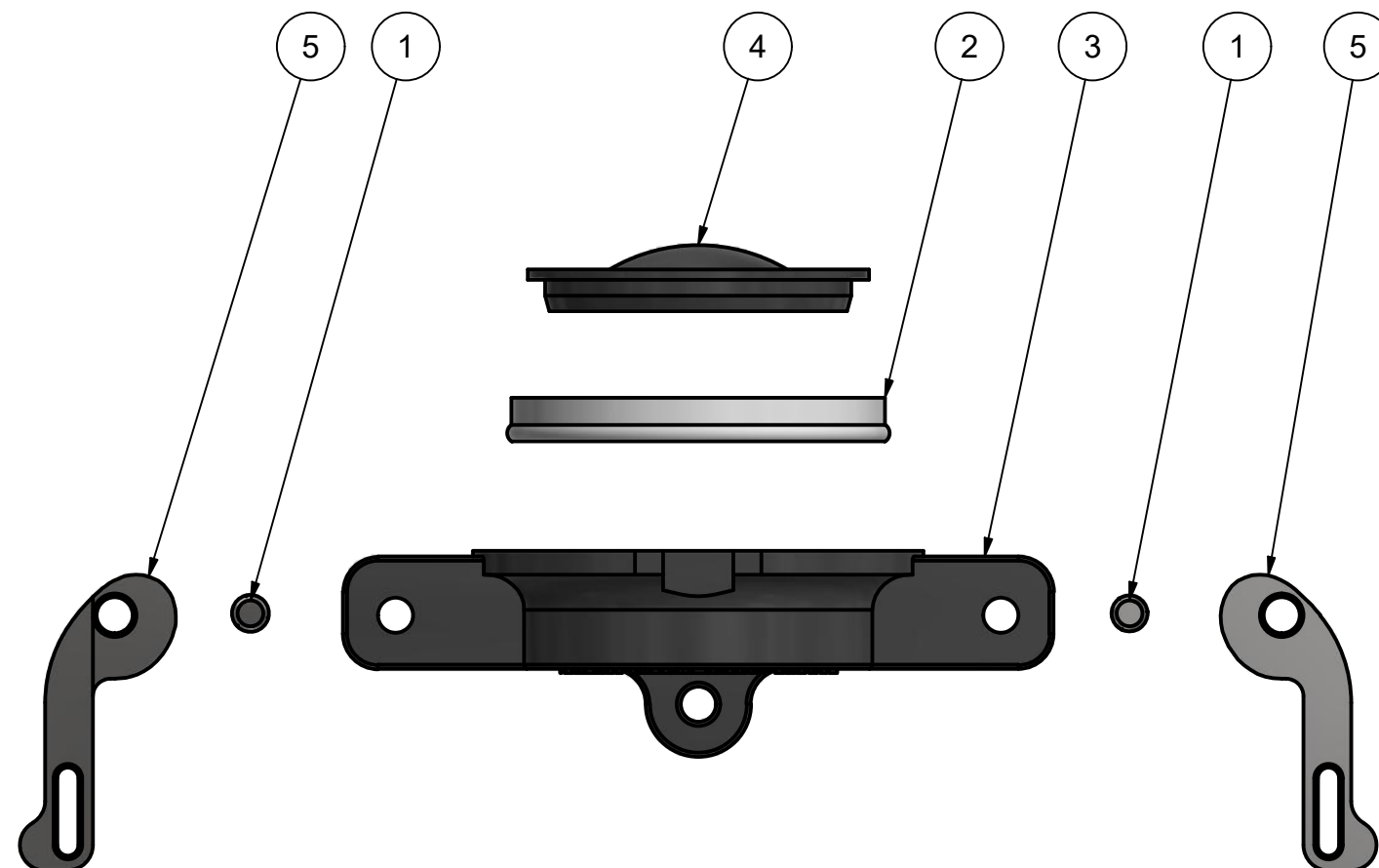
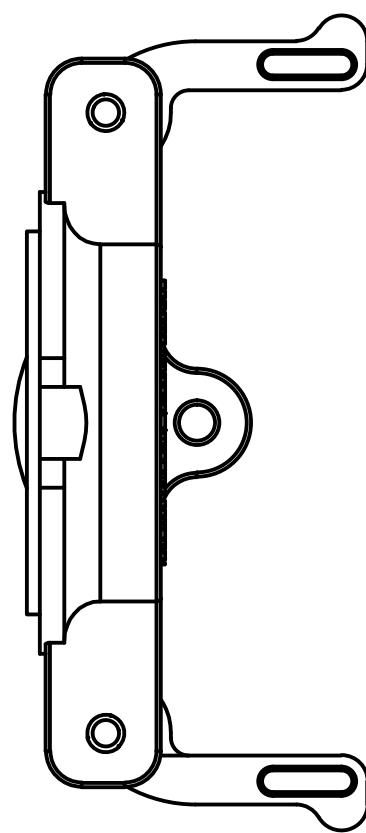
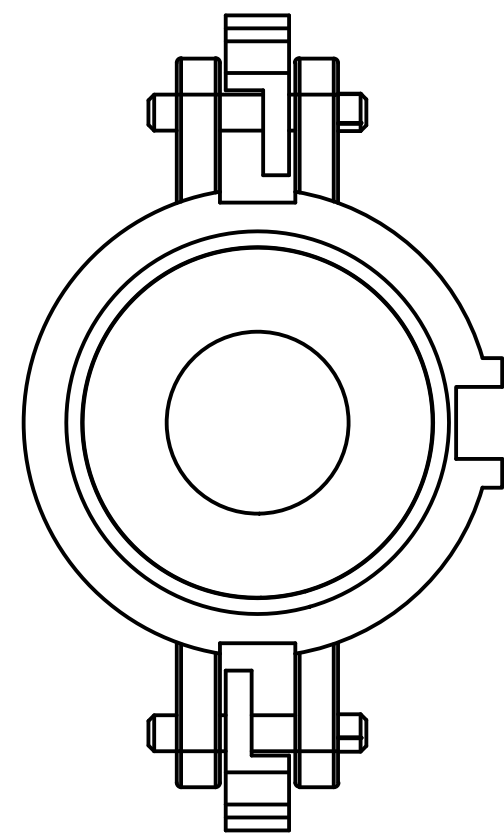
3

2

1

PARTS LIST

ITEM	QTY	PART NUMBER	DESCRIPTION
1	2	200P	CAM ARM PIN
2	1	DB20311V	2" Drymate Dust Cap Gasket
3	1	DB20312C	2" POLY DM CAP/PLUG BODY, MACHINED
4	1	DB20313	2" Drymate Top Cap Insert
5	2	DM201KX	2" DRYMATE DUST CAP ARM



THIS DRAWING AND ALL INFORMATION CONTAINED THEREON ARE THE EXCLUSIVE PROPERTY OF BANJO CORPORATION.

UNLESS SPECIFICALLY NOTED, THIS DRAWING AND ITEMS SHOWN ON THIS DRAWING ARE SUBJECT TO CHANGE AT ANY TIME.

BANJO CORPORATION
 150 BANJO DRIVE, CRAWFORDSVILLE, IN 47933
 WEB SITE: WWW.BANJOCORP.COM
 E-MAIL: BANJOSALES@IDEXCORP.COM

DESCRIPTION
2" DRYMATE CAP

PART NUMBER
DM200CAP

4

3

2

1