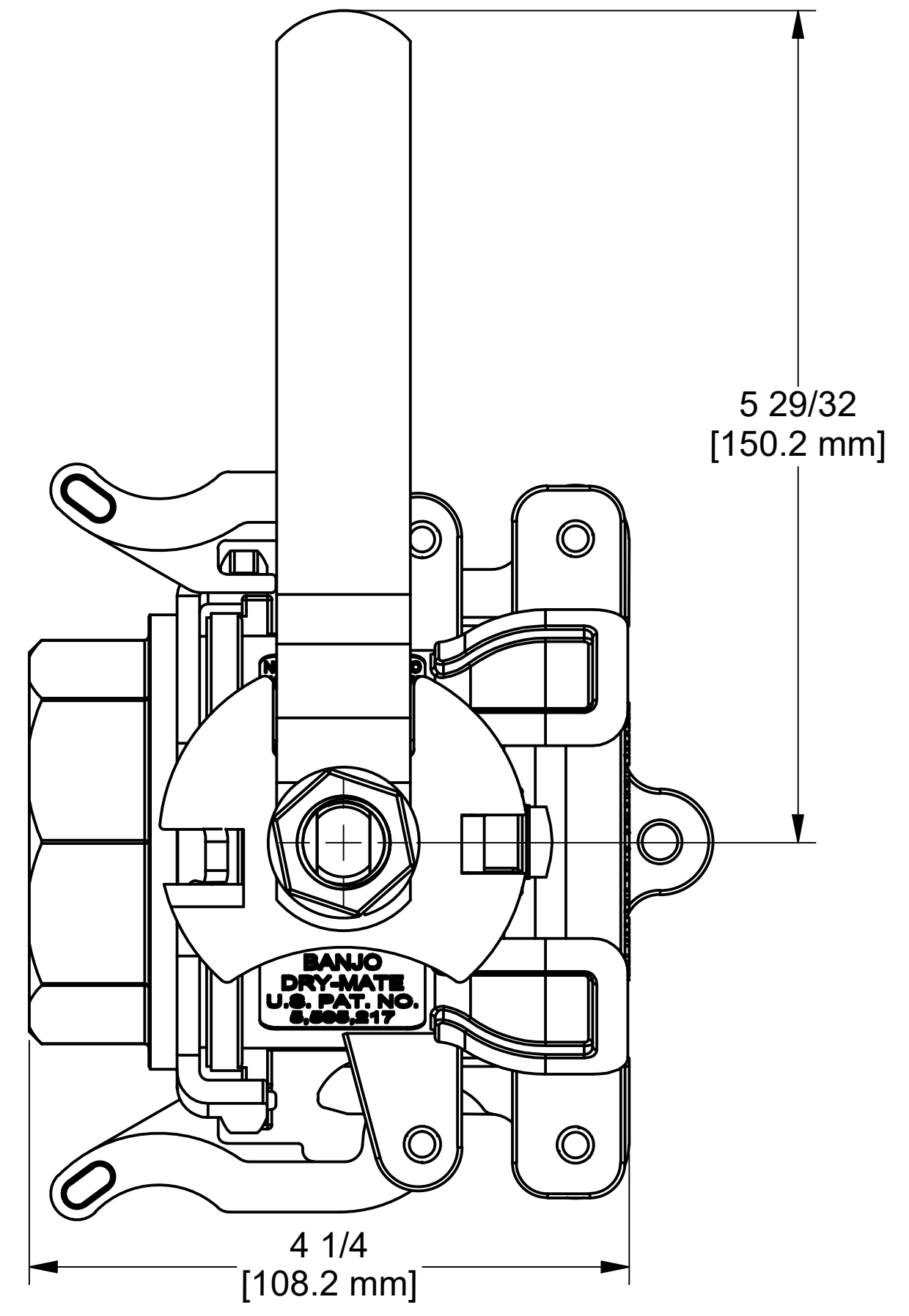
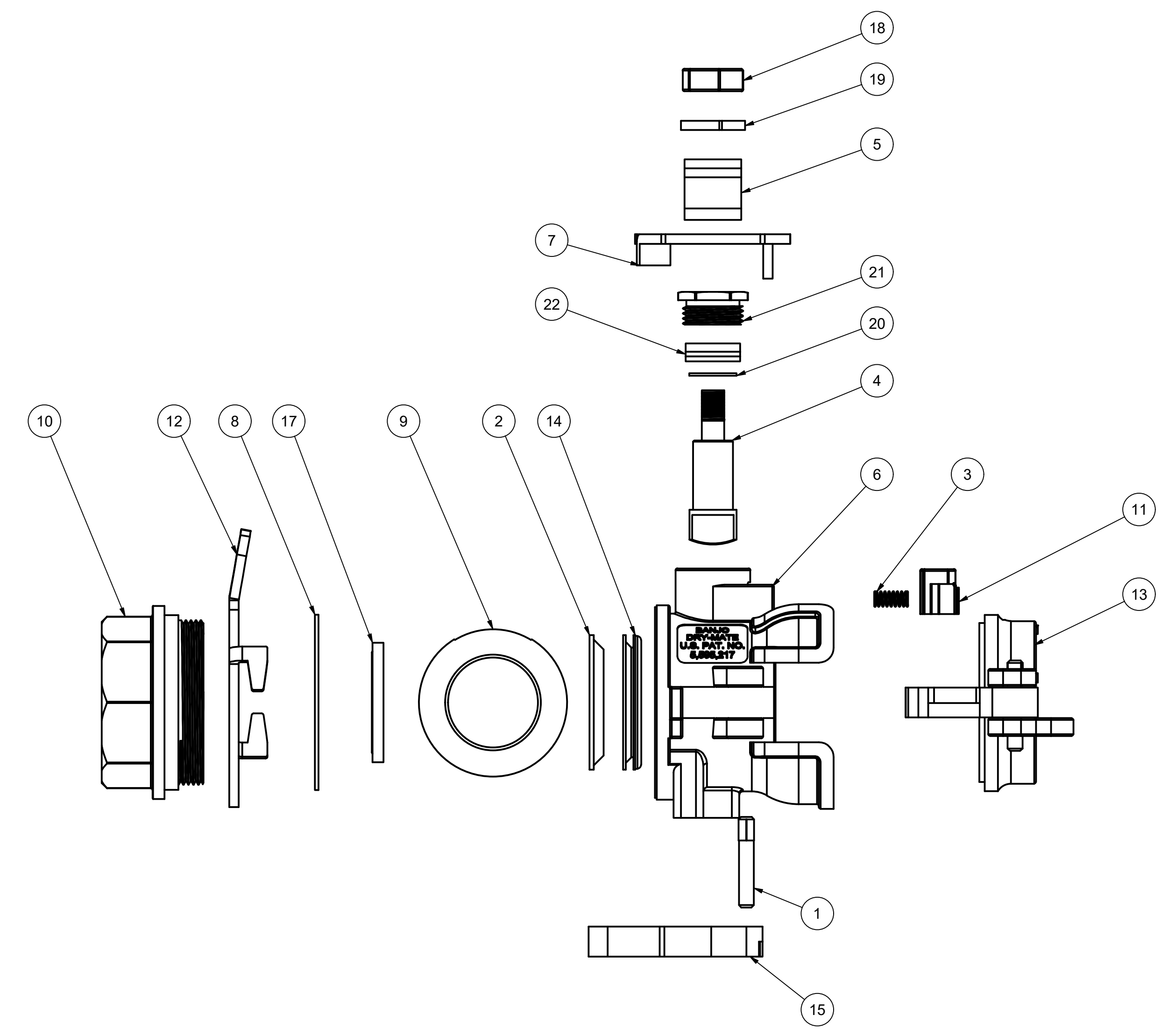
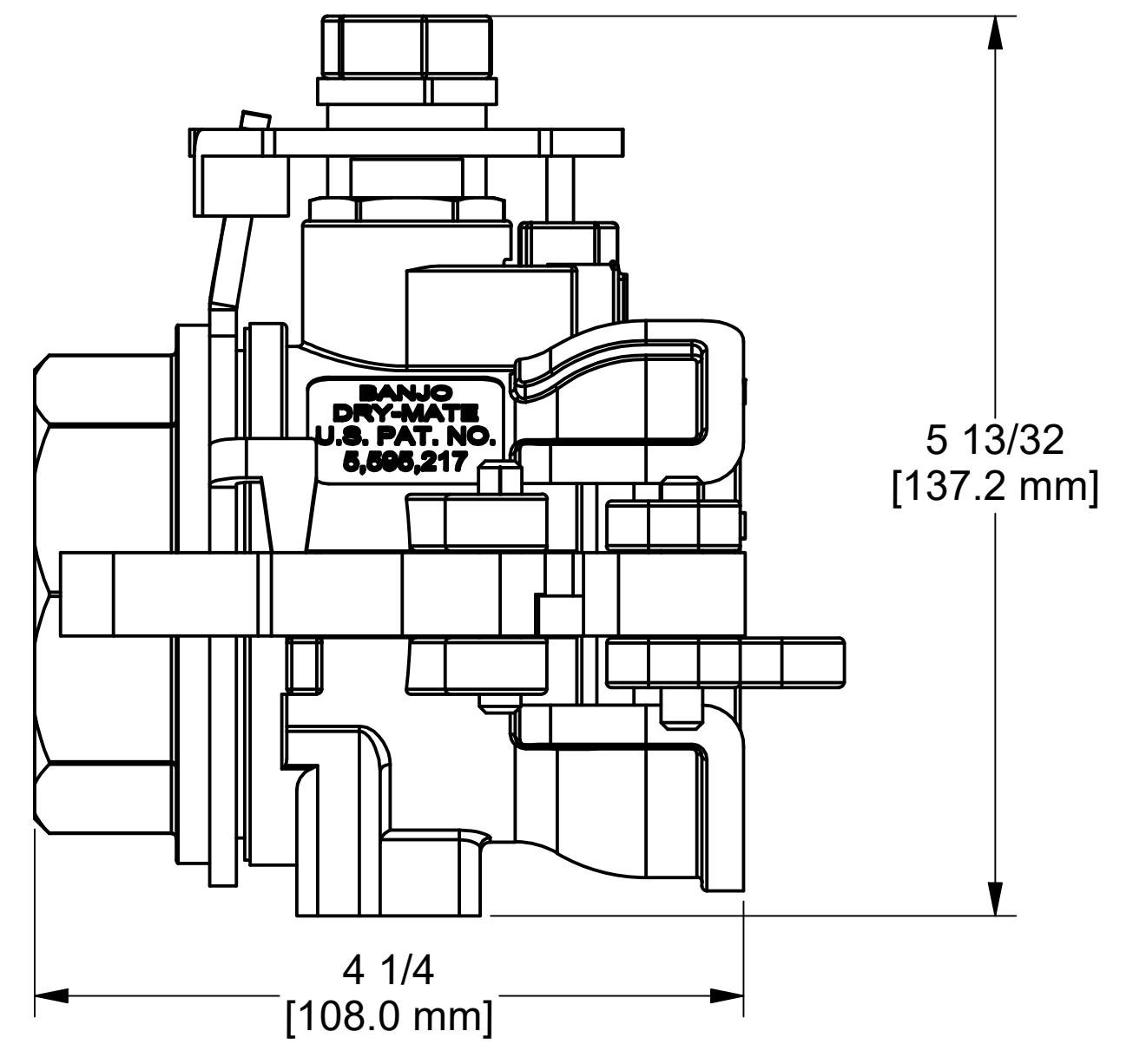
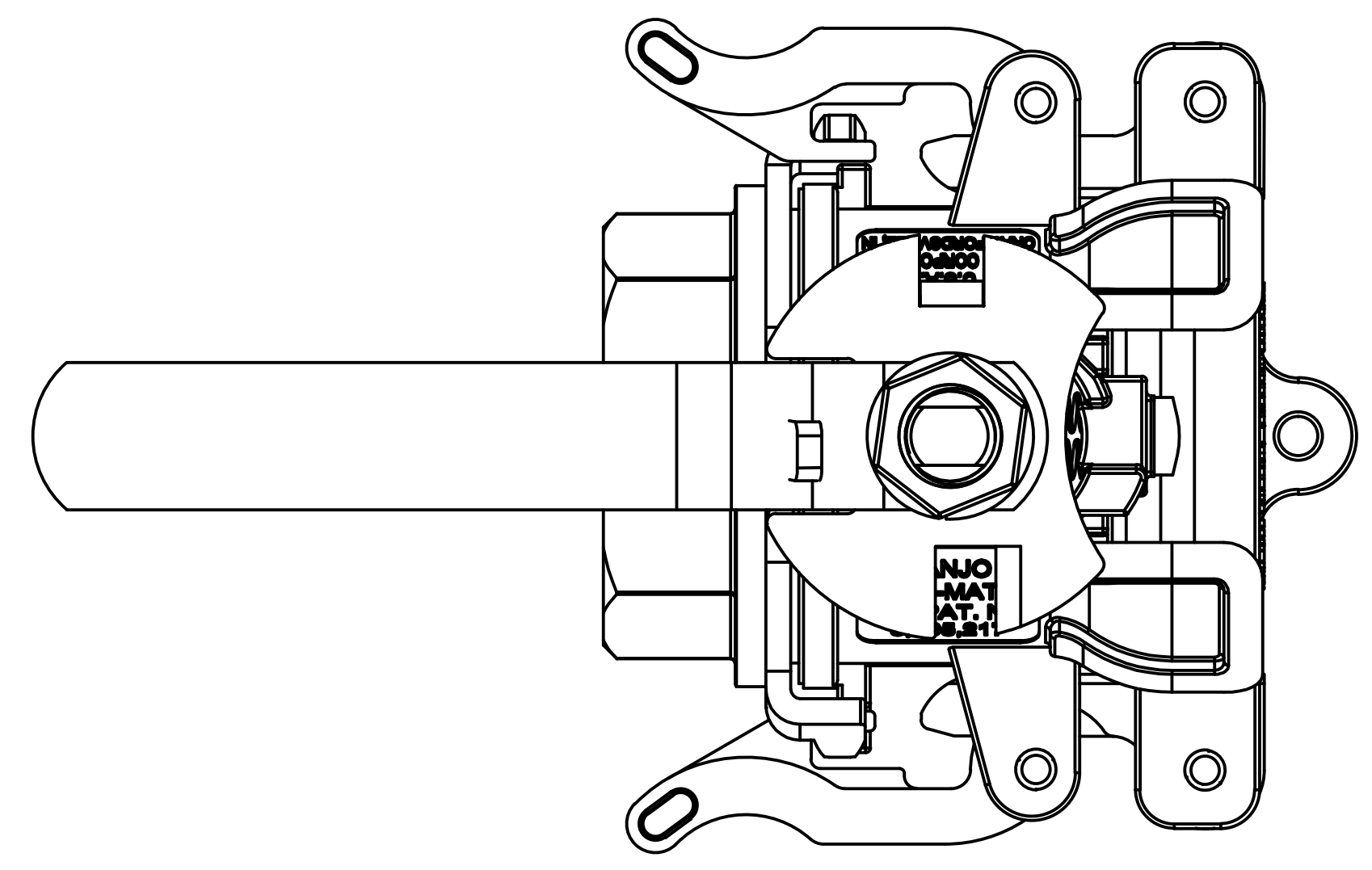


HANDLE IN CLOSED POSITION



HANDLE IN OPEN POSITION



| Parts List |     |             |                                    |
|------------|-----|-------------|------------------------------------|
| ITEM       | QTY | PART NUMBER | DESCRIPTION                        |
| 1          | 2   | 200P        | CAM ARM PIN                        |
| 2          | 1   | DB20258     | 2" DRYMATE TEFLON SEAT             |
| 3          | 2   | DB20281     | Dry Mate Handle Interlock Spring   |
| 4          | 1   | DM15151SS   | 1 1/2" SS DM Stem                  |
| 5          | 1   | DM15153SS   | 2" Dry Mate Male Handle            |
| 6          | 1   | DM15154FSS  | 1-1/2" & 2" FEMALE SS DRYMATE BODY |
| 7          | 1   | DM15154SS   | DM200SS Interlock Cam, Female      |
| 8          | 1   | DM15204SS   | DM150 BODY GASKET                  |
| 9          | 1   | DM15255FSS  | 1 1/2" SS Female Drymate Ball      |
| 10         | 1   | DM15256FSS  | 2" FNPT SS DRYMATE ENDPLATE        |
| 11         | 1   | DM15288SS   | ANTI ROTATION BUTTON 316SS         |
| 12         | 1   | DM15289SS   | 1-1/2" LOCKING YOKE DM 316SS       |
| 13         | 1   | DM200APL    | 2" DRYMATE PLUG ASSY               |
| 14         | 1   | DM20295A    | 2" DRYMATE SEAL                    |
| 15         | 2   | DM202KX     | 2"DRY MATE CAM ARM 0.266 Hole      |
| 16         | 1   | V20207A     | Polyurethane Lanyard (NOT SHOWN)   |
| 17         | 1   | V20258      | 2" Ball Seat                       |
| 18         | 1   | VSS15020    | 5/8"-18 SS Jam Nut                 |
| 19         | 1   | VSS15021    | 5/8" Lock Washer                   |
| 20         | 1   | VSS15060    | 2" SS Thrust Washer                |
| 21         | 1   | VSS15159    | 1 1/2" SS Gland Nut                |
| 22         | 1   | VSS15160    | TFE Stem Packing                   |



THIS DRAWING AND ALL INFORMATION CONTAINED THEREON ARE THE EXCLUSIVE PROPERTY OF BANJO CORPORATION.

UNLESS SPECIFICALLY NOTED, THIS DRAWING AND ITEMS SHOWN ON THIS DRAWING ARE SUBJECT TO CHANGE AT ANY TIME.

BANJO CORPORATION  
 150 BANJO DRIVE, CRAWFORDSVILLE, IN 47933  
 WEB SITE: WWW.BANJO.CORP.COM  
 E-MAIL: BANJOSALES@IDEXCORP.COM

DESCRIPTION  
 2" SS FEMALE DRYMATE EPDM

PART NUMBER  
 DM200DSSE