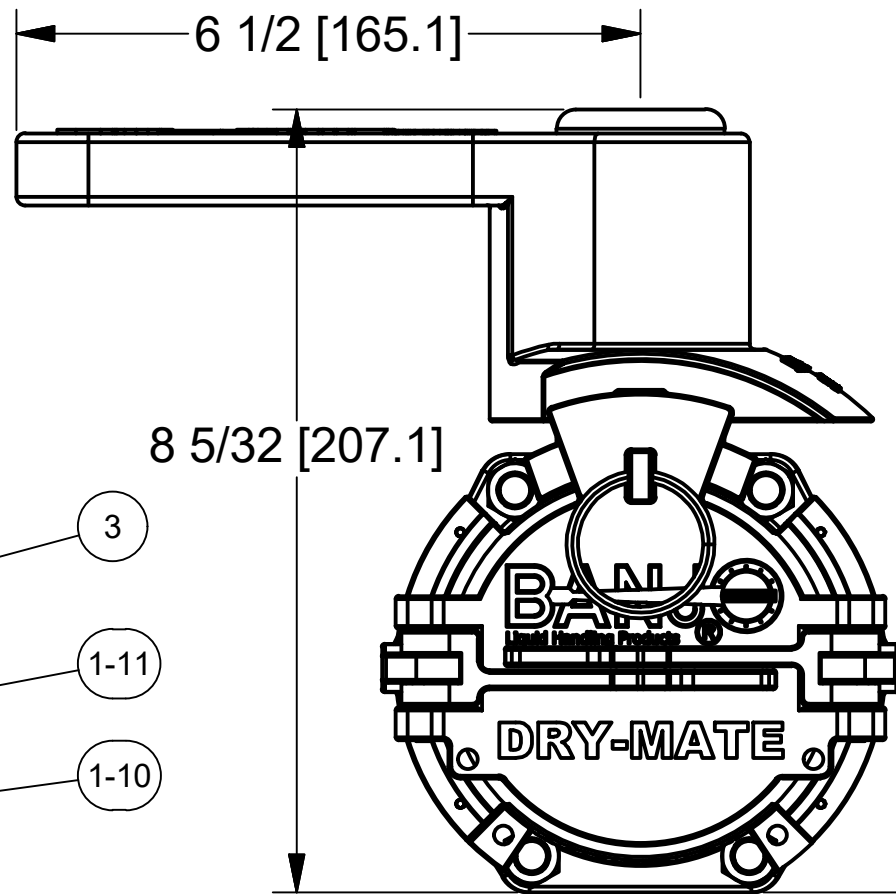
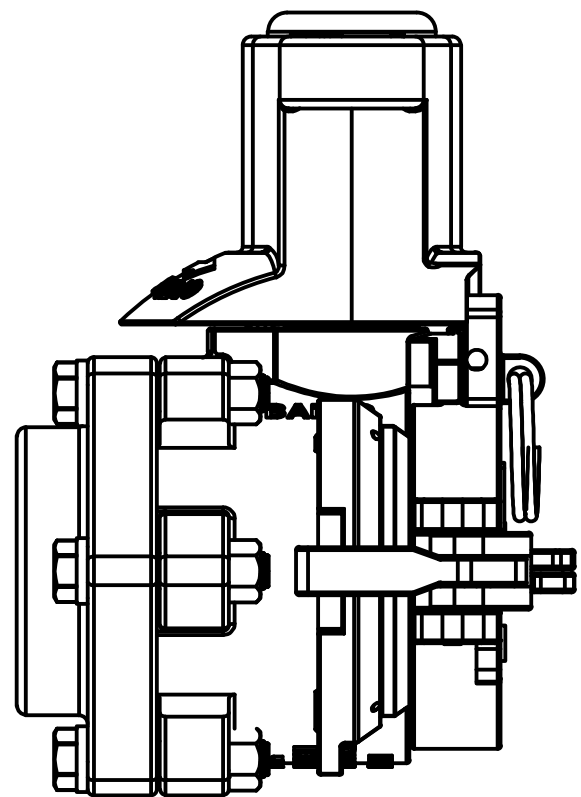
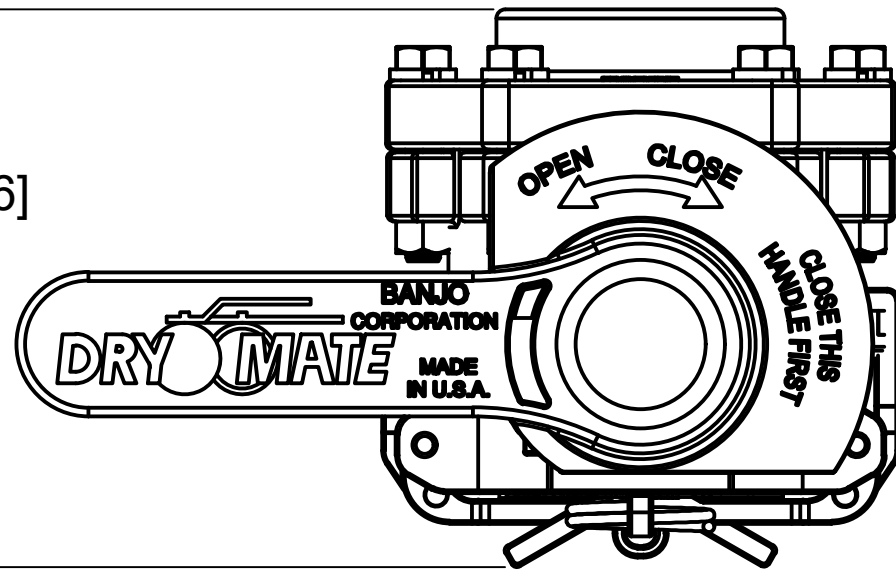
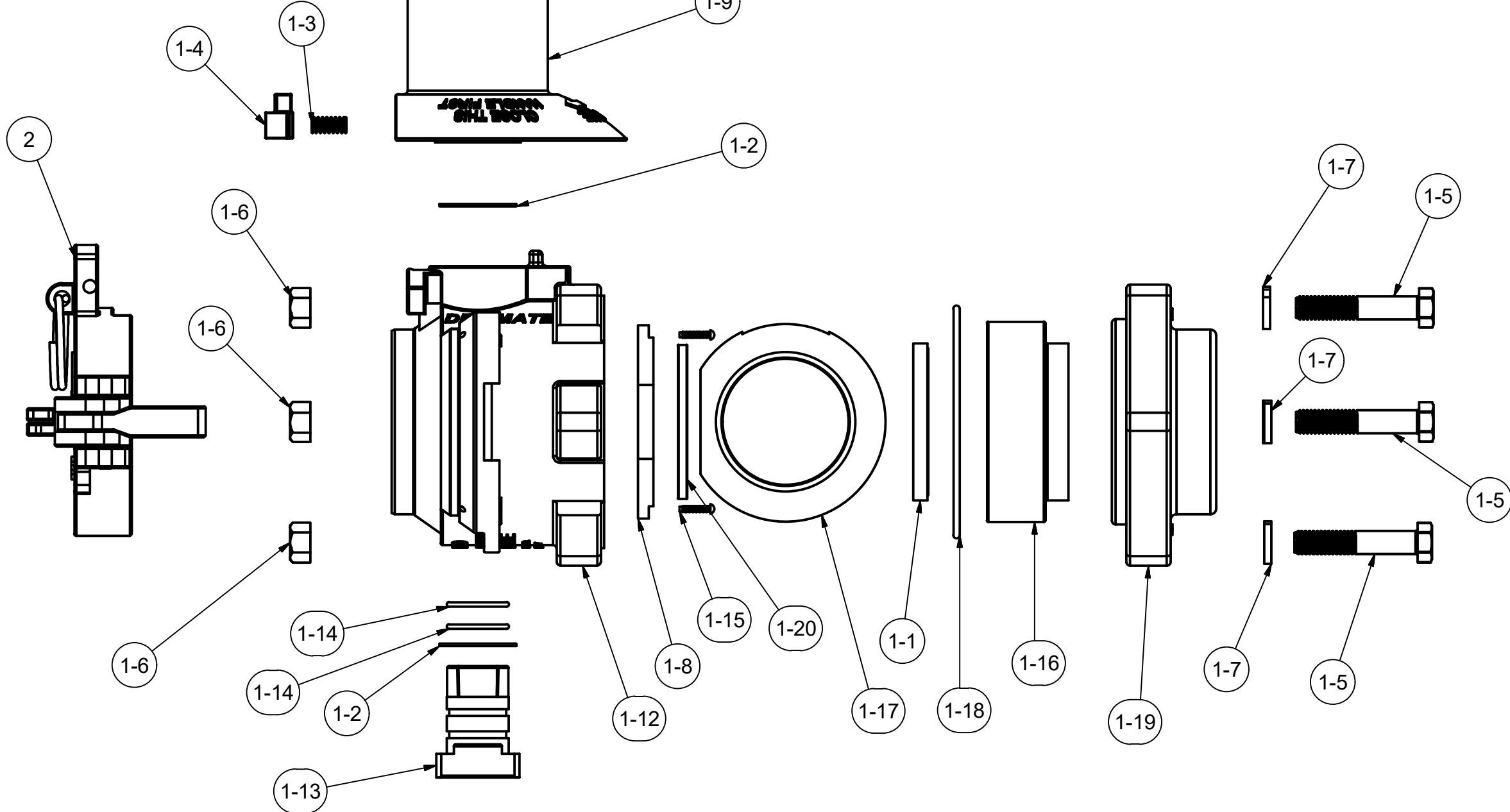


5 13/16 [147.6]



Parts List			
ITEM	QTY	PART NUMBER	DESCRIPTION
1	1	DM220ABX	2" FP Poly Male Dry Mate BSP Pretest
1-1	1	V25258A	3" FP Ball Seat
1-2	2	V25060	VALVE STEM THRUST BEARING
1-3	1	DB20281	Dry Mate Handle Interlock Spring
1-4	1	DM25288M	2" FP Male DM Handle Interlock Button
1-5	6	V20010SS	3/8-16 X 2" HHCS
1-6	6	V20019	3/8" HEX NUT
1-7	6	V20018	3/8" LOCKWASHER
1-8	2	DM25006	2" FP DM Clamp Rib
1-9	1	DM25153M	2" FP Male Poly DM Handle
1-10	1	V25121	3/8" Fender Washer
1-11	1	V25020	3/8" Handle Bolt
1-12	1	DM25254M	2" FP Male DM Body
1-13	1	VS25151C	3" Stubby Stem w/ O-ring Grooves
1-14	2	A020V	#20 O'RING
1-15	4	DP02050	#2 x 1/2" Type U Drive Screw
1-16	1	DM25256SP	2" FP Poly DM Body/EP Filler Machined
1-17	1	DM25255	2" FP DM Ball
1-18	1	V25264	CUSTOM BODY O-RING
1-19	1	V25256B	2" Full Port Endplate BSP
1-20	1	DM25258A	2" FP Poly DM Seat
2	1	DM220CAP	2" FP DM Dust CAP
3	1	V25502	3/4" Cap Plug



THIS DRAWING AND ALL INFORMATION CONTAINED THEREON ARE THE EXCLUSIVE PROPERTY OF BANJO CORPORATION. UNLESS SPECIFICALLY NOTED, THIS DRAWING AND ITEMS SHOWN ON THIS DRAWING ARE SUBJECT TO CHANGE AT ANY TIME.

BANJO CORPORATION
 150 BANJO DRIVE, CRAWFORDSVILLE, IN 47933
 WEB SITE: WWW.BANJOCORP.COM
 E-MAIL: BANJOSALES@IDEXCORP.COM

DESCRIPTION
 2" FP Poly Male Dry Mate BSP

PART NUMBER
 DM220AB