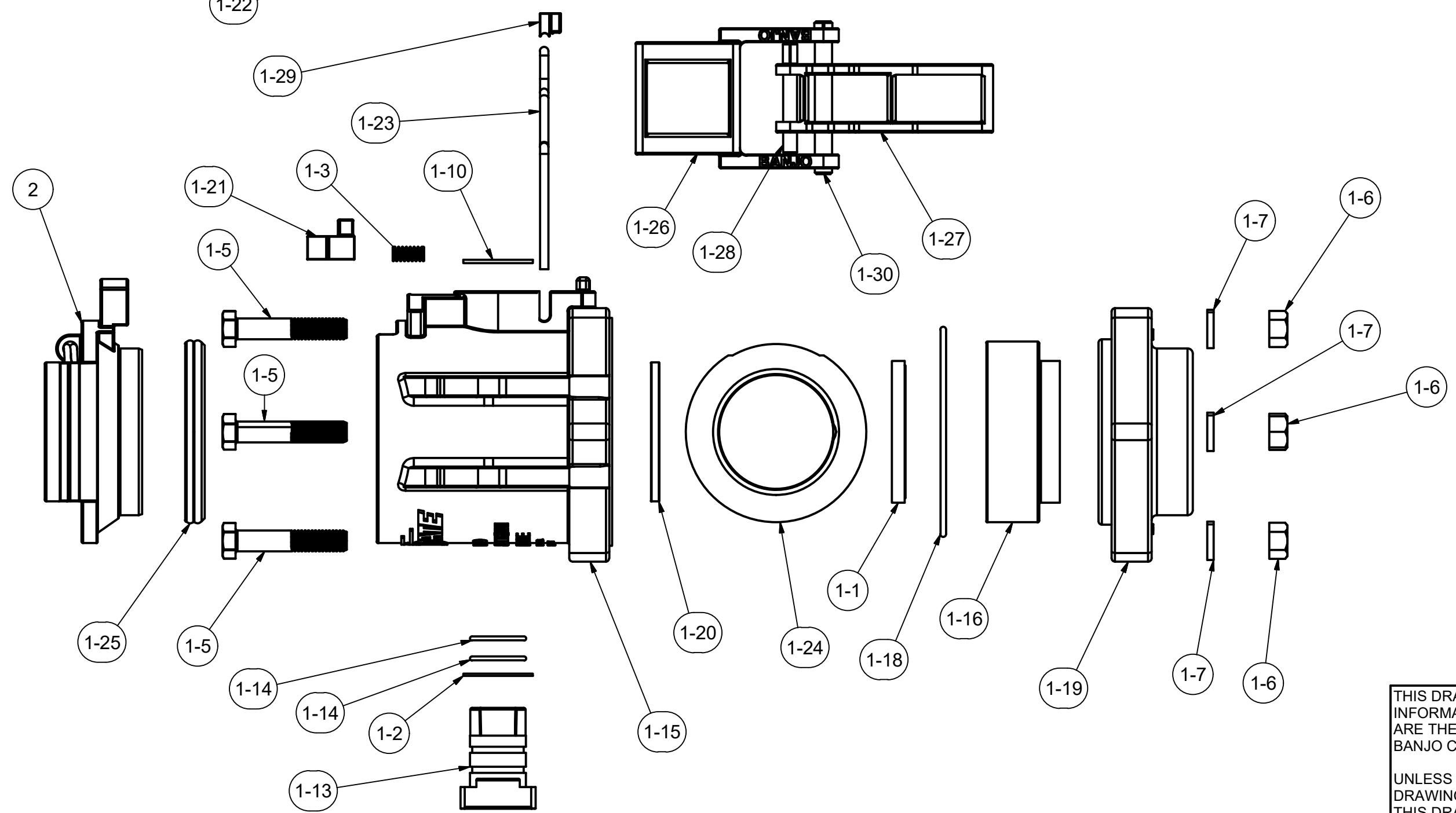



Parts List			
ITEM	QTY	PART NUMBER	DESCRIPTION
1	1	DM220DBX	2" FP Poly Female Dry Mate BSP Pretest
1-1	1	V25258A	3" FP Ball Seat
1-2	2	V25060	VALVE STEM THRUST BEARING
1-3	1	DB20281	Dry Mate Handle Interlock Spring
1-5	6	V20010SS	3/8-16 X 2" HHCS
1-6	6	V20019	3/8" HEX NUT
1-7	6	V20018	3/8" LOCKWASHER
1-10	1	V25121	3/8" Fender Washer
1-11	1	V25020	3/8" Handle Bolt
1-13	1	VS25151C	3" Stubby Stem w/ O-ring Grooves
1-14	2	A020V	#20 O-RING
1-15	1	DM25254F	2" FP Female DM Body
1-16	1	DM25256SP	2" FP Poly DM Body/EP Filler Machined
1-18	1	V25264	CUSTOM BODY O-RING
1-19	1	V25256B	2" Full Port Endplate BSP
1-20	1	DM25258A	2" FP Poly DM Seat
1-21	1	DM25288F	2" FP Female DM Handle Interlock Button
1-22	1	DM25153F	2" FP Female Poly DM Handle
1-23	1	DM25289	2" FP Poly DM Yoke
1-24	1	V25255A	2" FP Valve Ball
1-25	1	DM25294	2" FP DM Face Seal - FKM
1-26	2	DM25009A	2" FP DM Clamp Arm
1-27	2	DM25010B	2" FP Poly DM Clamp Lever
1-28	2	GP025200	1/4" x 2" Groove Pin, SS
1-29	2	DM25013	2" FP DM Wire Form Hold Down Block
1-30	2	GP0516275	5/16" x 2 3/4" Groove Pin, SS
2	1	DM221PL	2" FP DM Dust Plug



THIS DRAWING AND ALL INFORMATION CONTAINED THEREON ARE THE EXCLUSIVE PROPERTY OF BANJO CORPORATION.

UNLESS SPECIFICALLY NOTED, THIS DRAWING AND ITEMS SHOWN ON THIS DRAWING ARE SUBJECT TO CHANGE AT ANY TIME.



BANJO CORPORATION
 150 BANJO DRIVE, CRAWFORDSVILLE, IN 47933
 WEB SITE: WWW.BANJOCORP.COM
 E-MAIL: BANJOSALES@IDEXCORP.COM

DESCRIPTION	2" FP Poly Female Dry Mate BSP
PART NUMBER	DM220DB