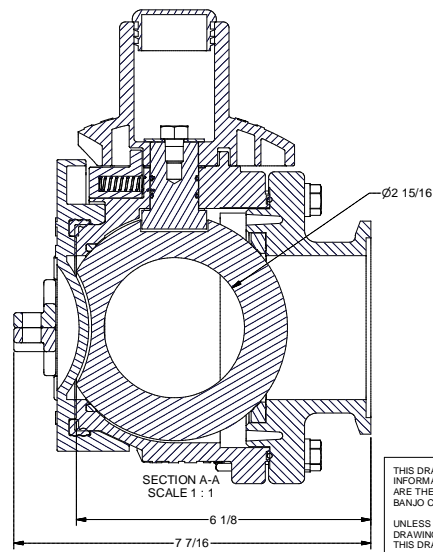
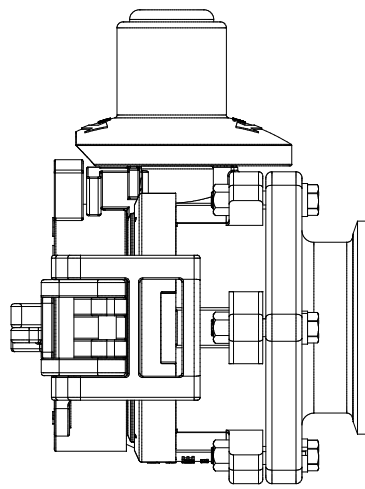


Parts List			
ITEM	QTY	PART NUMBER	DESCRIPTION
1	1	DM35254M	3" FP Male DM Body
2	2	V25060	VALVE STEM THRUST BEARING
3	1	DM35255	3" Full Port Dry Mate Ball
4	1	VS25151C	3" Stubby Stem w/ O-ring Grooves
5	2	A020V	#20 O'RING
6	1	DM35258	3" FP DM Ball Seat
7	1	V35265	3" FP body O-ring FKM
8	1	DM35288M	3" FP DM Handle Button
9	1	DM35281	3" FP DM Button Spring
10	1	DM35153M	3" FP DM Handle
11	1	V25121	3/8" Fender Washer
12	1	V25020	3/8" Handle Bolt
13	1	V25502	3/4" Cap Plug
15	1	V35258A	3" FP Ball Seat
16	6	V20010SS	3/8-16 X 2" HHCS
17	6	V20018	3/8" LOCKWASHER
18	6	V20019	3/8" HEX NUT
19	2	DM35006	3" FP DM Male Clamp Rib
20	4	DP02063	#2 x 5/8" Type U Drive Screw
21	1	DM300CAP	3" DM CAP
22	1	V35278	3" FP MANIFOLD END PLATE



THIS DRAWING AND ALL INFORMATION CONTAINED THEREON ARE THE EXCLUSIVE PROPERTY OF BANJO CORPORATION.

UNLESS SPECIFICALLY NOTED, THIS DRAWING AND ITEMS SHOWN ON THIS DRAWING ARE SUBJECT TO CHANGE AT ANY TIME.



BANJO CORPORATION
150 BANJO DRIVE, CRAWFORDSVILLE, IN 47933
WEB SITE: WWW.BANJOCORP.COM
E-MAIL: BANJOSALES@BANJOCORP.COM

DESCRIPTION:
3" PP Male Dry Mate /w Manifold Endplate
PART NUMBER:
DM300ACF