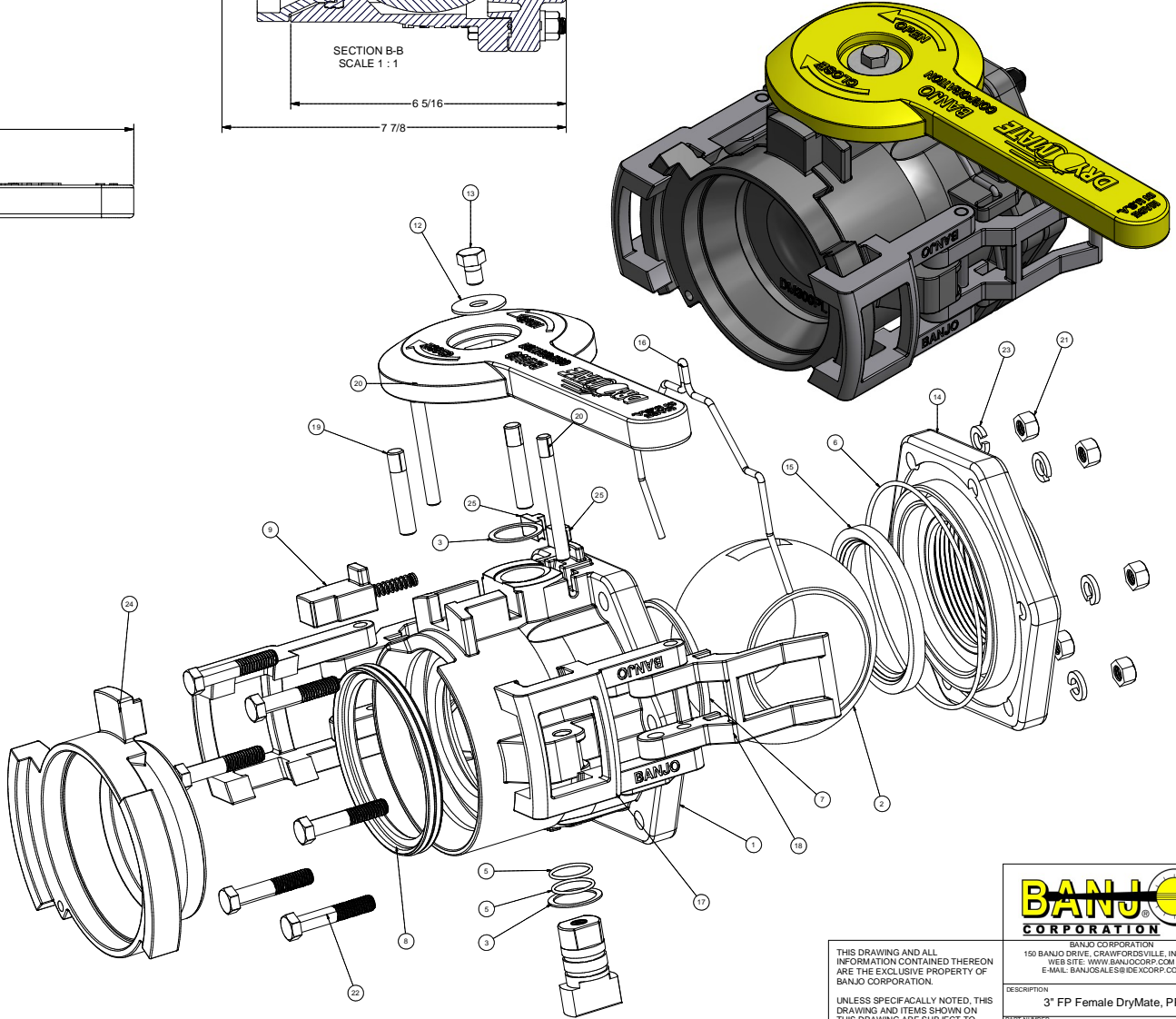
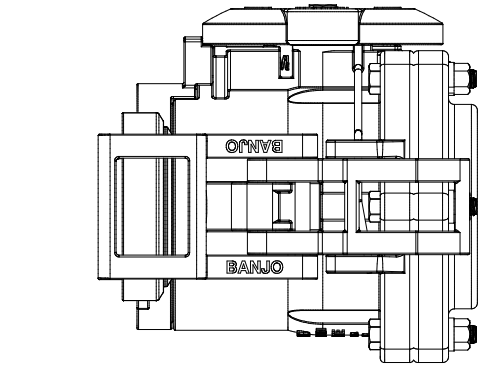
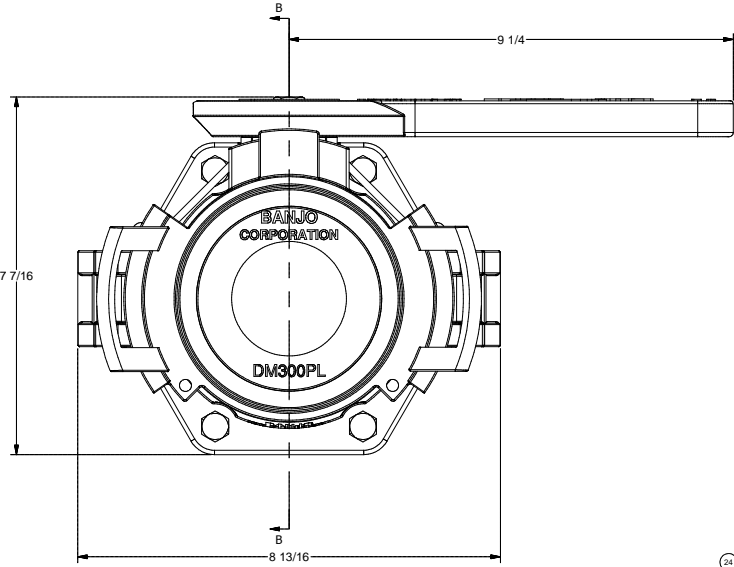


Parts List			
ITEM	QTY	PART NUMBER	DESCRIPTION
1	1	DM35254F	3" FP Female DM Body
2	1	V35255A	3" Full Port Ball
3	2	V25060	VALVE STEM THRUST BEARING
4	1	V30151C	3" Stem w/ O-ring Grooves
5	2	A020V	#20 O'RING
6	1	V35265	3" FP body O-ring FKM
7	1	DM35258	3" FP DM Ball Seat
8	1	DM35294	3" FP DM Face Seal - FKM
9	1	DM35288F	3" FP DM Handle Button
10	1	DM35281	3" FP DM Button Spring
11	1	DM35153F	3" FP DM Female Handle
12	1	V25121	3/8" Fender Washer
13	1	V25020	3/8" Handle Bolt
14	1	V35264	3" FP End Plate
15	1	V35258A	3" FP Ball Seat
16	1	DM35289	3" FP DM Locking Yoke
17	2	DM35009	3" FP DM Clamp Arm
18	2	DM35010	3" FP DM Clamp Lever
19	2	GP038200	3/8" x 2" Groove Pin, SS
20	2	GP0516300	5/16" x 3" Groove Pin, SS
21	6	V20019	3/8" HEX NUT
22	6	V20010SS	3/8-16 X 2" HHCS
23	6	V20018	3/8" LOCKWASHER
24	1	DM300PL	3" FP Dry Mate Plug
25	2	DM35013	3" DM Wire Form Hold Down Block



THIS DRAWING AND ALL INFORMATION CONTAINED THEREON ARE THE EXCLUSIVE PROPERTY OF BANJO CORPORATION.  
UNLESS SPECIFICALLY NOTED, THIS DRAWING AND ITEMS SHOWN ON THIS DRAWING ARE SUBJECT TO CHANGE AT ANY TIME.



BANJO CORPORATION  
150 BANJO DRIVE, CRAWFORDSVILLE, IN 47833  
WEB SITE: WWW.BANJOCORP.COM  
E-MAIL: BANJOSALES@BANJOCORP.COM

DESCRIPTION:  
3" FP Female DryMate, PP  
PART NUMBER:  
DM300DFP