

4

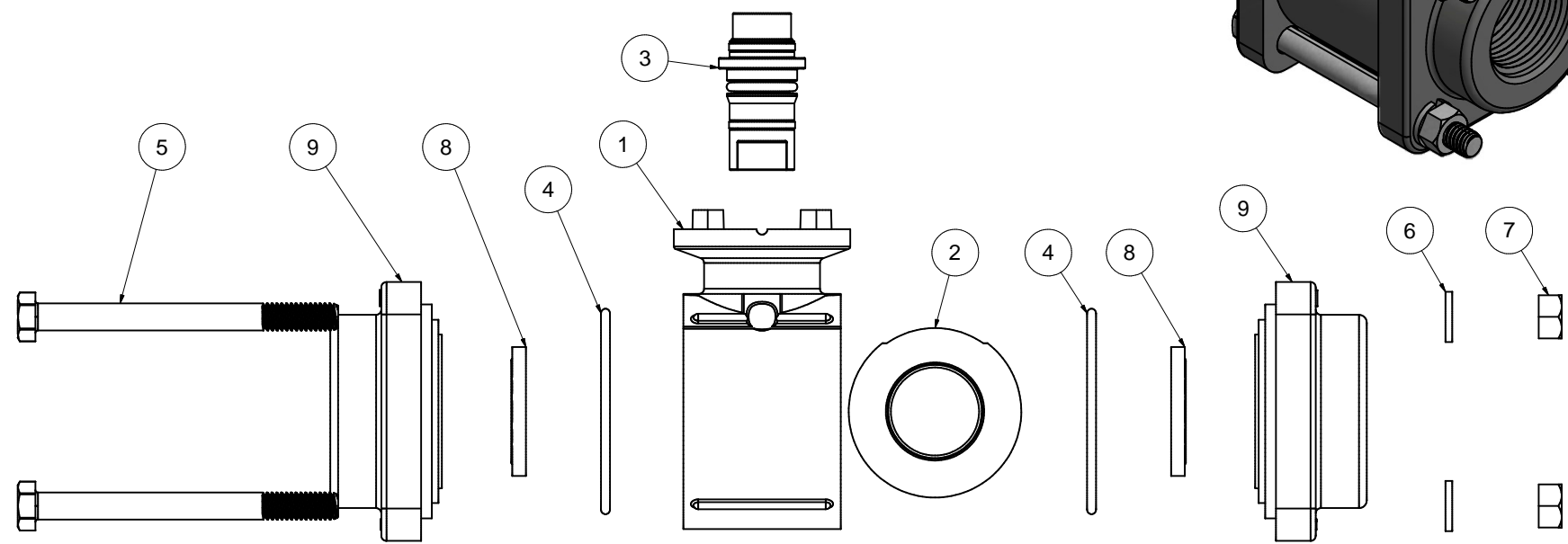
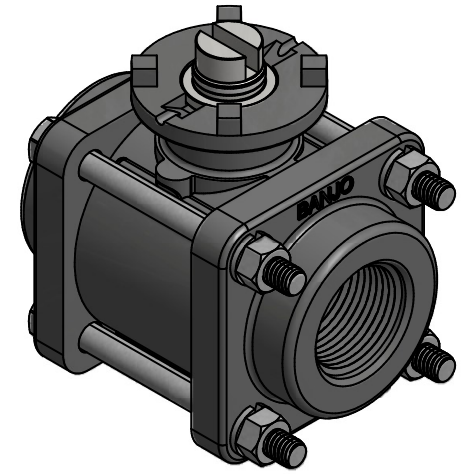
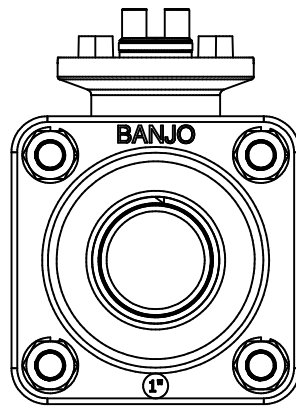
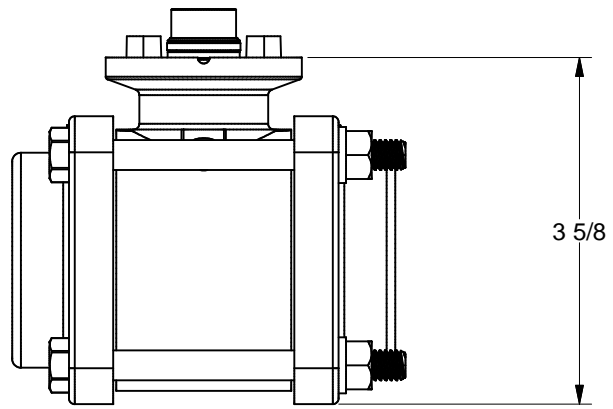
3

2

1

Parts List

ITEM	QTY	PART NUMBER	DESCRIPTION
1	1	MEV10254A	1" FP Manifold Style Ve Body
2	1	VE10155SSH	1" VE SS Hollow Ball
3	1	MEV10151	1" Top Load Stem Assy
4	2	VE10264E	#139 O-RING, EPDM
5	4	V10117	5/16 - 18 X 3 1/2" HHCS
6	4	V10118	5/16" LOCKWASHER
7	4	V10119	5/16" HEX NUT
8	2	VE10258A	1" VE Seat TFM
9	2	VE10257A	1" VE ENDPLATE



Assembly Specs:
 Body Bolt Tightening Torque: 75 in-lb
 Max Stem Turning Torque: 50 in-lb

THIS DRAWING AND ALL INFORMATION CONTAINED THEREON ARE THE EXCLUSIVE PROPERTY OF BANJO CORPORATION.
 UNLESS SPECIFICALLY NOTED, THIS DRAWING AND ITEMS SHOWN ON THIS DRAWING ARE SUBJECT TO CHANGE AT ANY TIME.

BANJO CORPORATION
 150 BANJO DRIVE, CRAWFORDSVILLE, IN 47933
 WEB SITE: WWW.BANJOCORP.COM
 E-MAIL: SALES1@BANJOCORP.COM

DESCRIPTION: 1" FP Valve SubAssy
 PART NUMBER: EV100XR1

4

3

2

1