

PARTS LIST			
ITEM	QTY	PART NUMBER	DESCRIPTION
1	1	MEV10151	1" Top Load Stem Assy
2	1	MVE004	MVE Mounting Breather
3	2	VE10258A	1" VE Seat TFM
4	2	VE10264E	#139 O-RING, EPDM

B

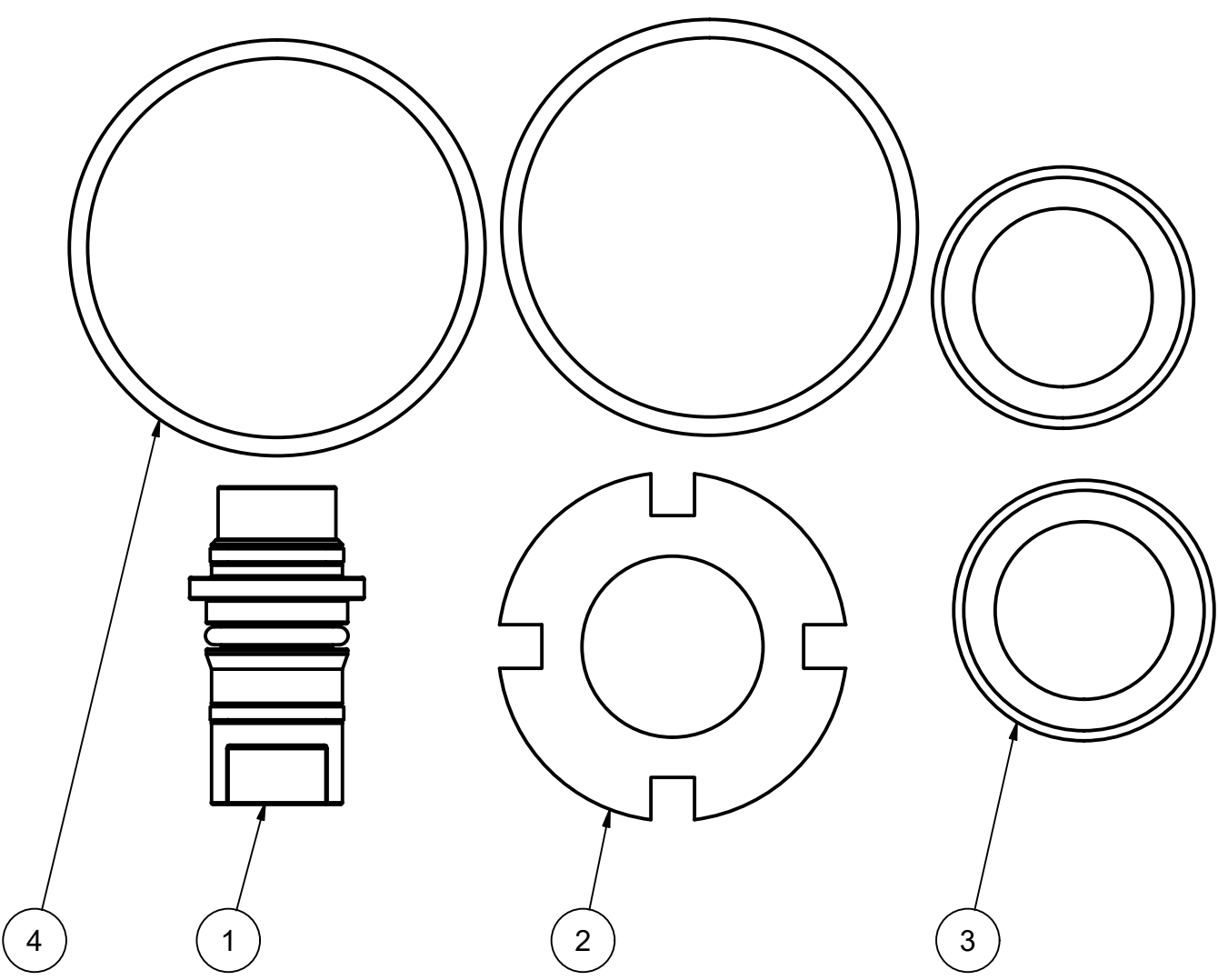
B

A

A

A

A



THIS DRAWING AND ALL INFORMATION CONTAINED THEREON ARE THE EXCLUSIVE PROPERTY OF BANJO CORPORATION.

UNLESS SPECIFICALLY NOTED, THIS DRAWING AND ITEMS SHOWN ON THIS DRAWING ARE SUBJECT TO CHANGE AT ANY TIME.

BANJO
CORPORATION

BANJO CORPORATION
150 BANJO DRIVE, CRAWFORDSVILLE, IN 47933
WEB SITE: WWW.BANJOCORP.COM
E-MAIL: BANJOSALES@IDEXCORP.COM

DESCRIPTION
1" EV VALVE REPAIR KIT

PART NUMBER
EV10210

4

3

2

1

4

3

2

1