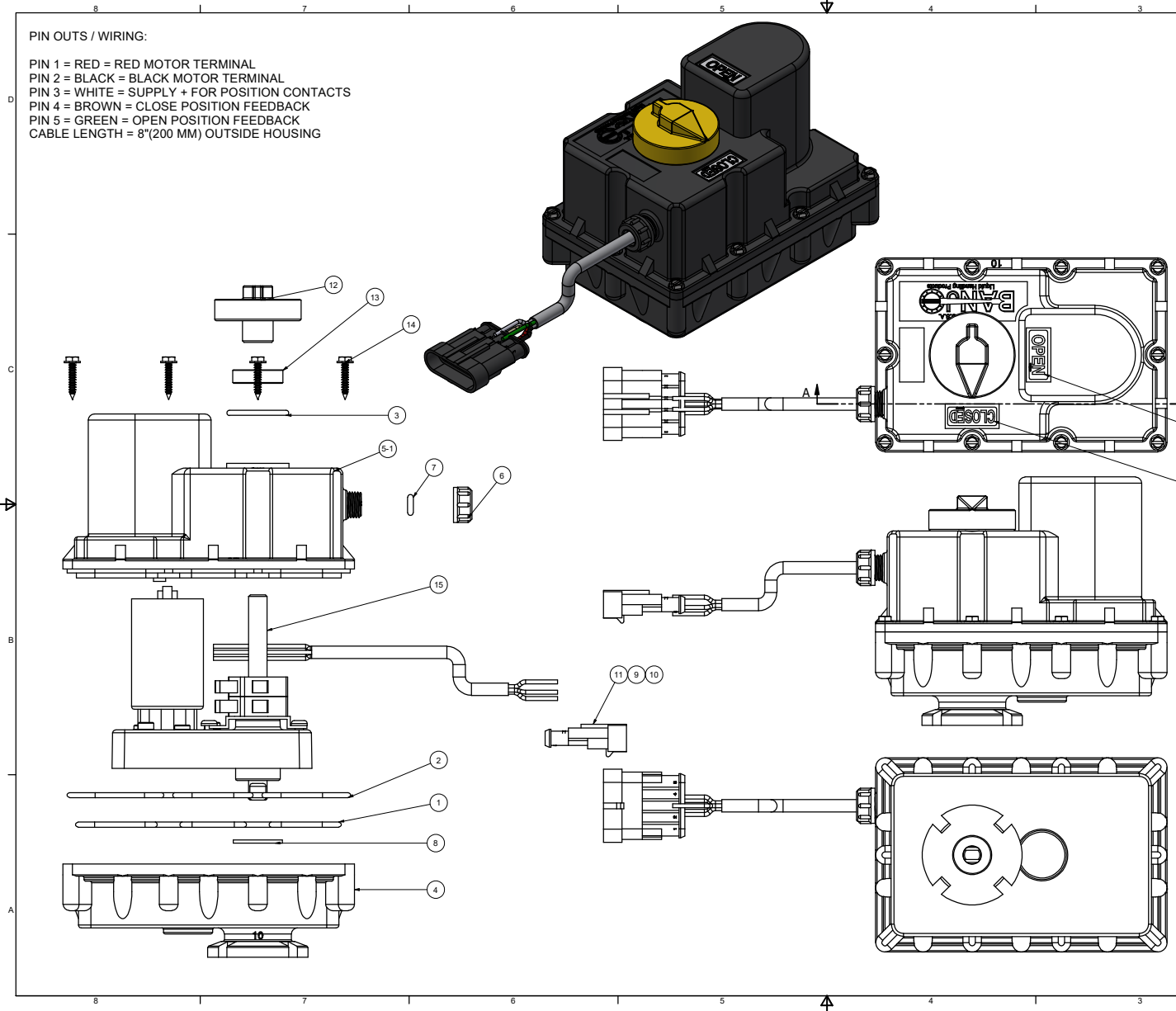
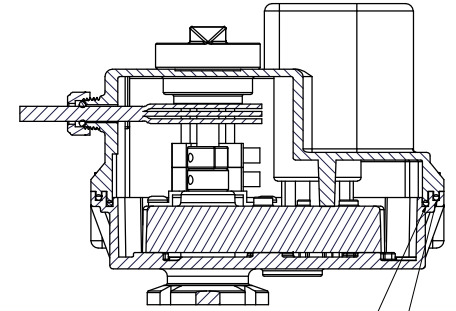


**PIN OUTS / WIRING:**

- PIN 1 = RED = RED MOTOR TERMINAL
- PIN 2 = BLACK = BLACK MOTOR TERMINAL
- PIN 3 = WHITE = SUPPLY + FOR POSITION CONTACTS
- PIN 4 = BROWN = CLOSE POSITION FEEDBACK
- PIN 5 = GREEN = OPEN POSITION FEEDBACK
- CABLE LENGTH = 8"(200 MM) OUTSIDE HOUSING



Parts List			
ITEM	QTY	PART NUMBER	DESCRIPTION
1	1	A161	2-161 O-RING, EPDM
2	1	A162	2-162 O-RING EPDM
3	1	F10E	AS568A -121 O-RING, EPDM, BLACK
4	1	MEV10101B	ELECTRIC VALVE ACTUATOR BOTTOM, SMALL MOTOR
5	1	MEV10102D	ELECTRIC VALVE ACTUATOR TOP, SMALL MOTOR, 1/4" CABLE SEAL
5-1	1	MEV10102DX	Electric Valve Actuator Top, Small Motor, 1/4" Cable Seal
5-2	1	VEL1004	VE "OPEN" Sticker
5-3	1	VEL1005	VE "CLOSED" Sticker
6	1	MVE002	HEYCO THREADED BUSHING
7	1	MVE007	3MMX5MM FKM O-RING
8	1	MVE105	VE MOTOR GASKET W/ 3/8" HOLE, EPDM
9	5	VE026	AMP MINI MIC TAB 183024-1
10	5	VE027	AMP SINGLE WIRE SEAL 281934-2
11	1	VE033	AMP SUPERSEAL 1.5 SERIES 5P CA 282107-1
12	1	VE107B	EV INDICATOR
13	1	VE109E	VE BOX SHAFT SEAL - EPDM
14	10	VE15220	#6X3/4"18-8SS HWH SMS
15	1	VE49849	3/4 SEC 5 WIRE ON/OFF MOTOR
16	1	VEI1023	ELECTRIC VALVE INDICATOR DECAL (NS)



THIS DRAWING AND ALL INFORMATION CONTAINED THEREON ARE THE EXCLUSIVE PROPERTY OF BANJO CORPORATION.  
UNLESS SPECIFICALLY NOTED, THIS DRAWING AND ITEMS SHOWN ON THIS DRAWING ARE SUBJECT TO CHANGE AT ANY TIME.

BANJO CORPORATION  
150 BANJO DRIVE, CRAWFORDSVILLE, IN 47933  
WEB SITE: WWW.BANJO.CORP.COM  
E-MAIL: BANJO.SALES@IDEXCORP.COM

DESCRIPTION:  
**EV ACTUATOR ASSEMBLY, 0.75S, 5W, 1R2BL3W4BR5G**

PART NUMBER:  
**EV3309**