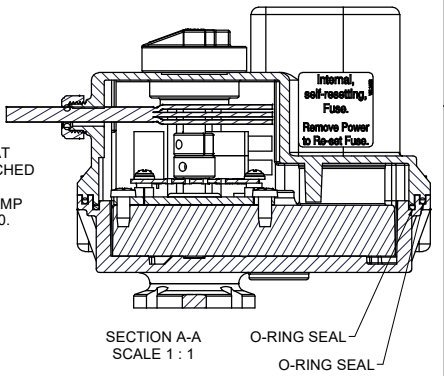


PARTS LIST			
ITEM	QTY	PART NUMBER	DESCRIPTION
1	1	A161	2-161 O-RING, EPDM
2	1	A162	2-162 O-RING EPDM
3	1	F10E	AS568A -121 O-RING, EPDM, BLACK
4	1	MEV25101B	ELECTRIC VALVE ACTUATOR BOTTOM, LARGE MOTOR
5	1	MEV25102D	ELECTRIC VALVE ACTUATOR TOP, LARGE MOTOR, 1/4" CABLE SEAL
5-1	1	MEV25102DX	Electric Valve Actuator Top, Large Motor, 1/4" Cable seal
5-3	1	VEL1005	VE "CLOSED" Sticker
6	1	MVE002	HEYCO 1/4" THREADED BUSHING
7	1	MVE007	3MMX5MM FKM O-RING
8	1	MVE107	VE MOTOR GASKET W/ 1/2" HOLE
9	1	VE107B	EV INDICATOR
10	1	VE109E	VE BOX SHAFT SEAL - EPDM
11	10	VE15220	#6X3/4"18-8SS HWH SMS
12	1	VE4987N	1 1/2 SEC. HIGH TORQUE, ON/OFF VE MOTOR NORMALLY OPEN
13	1	VEL1004	VE "OPEN" STICKER
14	1	VEL1017	EV ON/OFF STICKER
15	1	VEL1022	INTERNAL FUSE DECAL
16	1	VEL1023	EV INDICATOR DECAL

ADDED VEL1022 AT SAME TIME SWITCHED TO 5 AMP FUSE. SWITCHED TO 5 AMP FUSE ON 9/27/2010.



THIS DRAWING AND ALL INFORMATION CONTAINED THEREON ARE THE EXCLUSIVE PROPERTY OF BANJO CORPORATION.
UNLESS SPECIFICALLY NOTED, THIS DRAWING AND ITEMS SHOWN ON THIS DRAWING ARE SUBJECT TO CHANGE AT ANY TIME.

BANJO CORPORATION
150 BANJO DRIVE, CRAWFORDSVILLE, IN 47933
WEB SITE: WWW.BANJOCORP.COM
E-MAIL: BANJO.SALES@IDEXCORP.COM

DESCRIPTION
1 1/4 SEC, 3 WIRE, EV ACTUATOR ASSY, NORMALLY OPEN

PART NUMBER
EV4300N