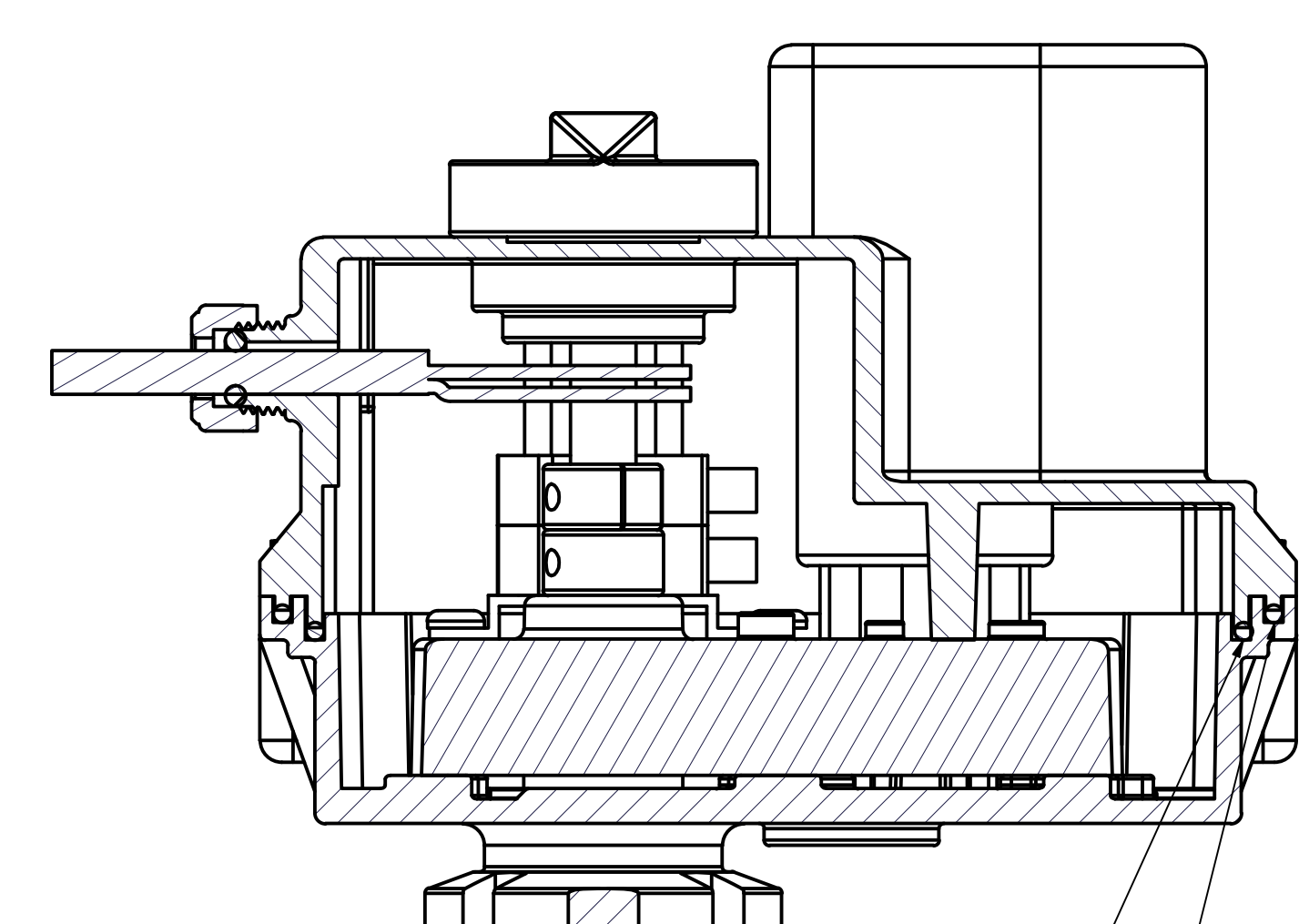


Parts List			
ITEM	QTY	PART NUMBER	DESCRIPTION
1	1	A161	2-161 O-ring, EPDM
2	1	A162	2-162 O-ring EPDM
3	1	F10E	AS568A -121 O-RING, EPDM, BLACK
4	1	MEV10101B	Electric Valve Actuator Bottom, Small Motor
5	1	MEV10102D	Electric Valve Actuator Top, Small Motor, 1/4" Cable Seal
6	1	MVE002	Heyco Threaded Bushing
7	1	MVE007	3mmx5mm FKM O-ring
8	1	MVE105	VE Motor Gasket w/ 3/8" Hole, EPDM
9	1	VE107B	EV Indicator
10	1	VE109E	VE BOX Shaft Seal - EPDM
11	10	VE15220	#6x3/4"18-8SS HWH SMS
12	1	VE4983	4 Sec, 4 Wire, Regulating Motor Assembly
13	1	VEL1008	EV On/Off Sticker



SECTION A-A  
SCALE 1 : 1  
O-RING SEAL  
O-RING SEAL

HOT STAMP "MMYY"  
MM = MONTH, YY = YEAR.



THIS DRAWING AND ALL INFORMATION CONTAINED THEREON ARE THE EXCLUSIVE PROPERTY OF BANJO CORPORATION.  
UNLESS SPECIFICALLY NOTED, THIS DRAWING AND ITEMS SHOWN ON THIS DRAWING ARE SUBJECT TO CHANGE AT ANY TIME.

BANJO CORPORATION  
150 BANJO DRIVE, CRAWFORDSVILLE, IN 47933  
WEB SITE: WWW.BANJO.CORP.COM  
E-MAIL: BANJOSALES@DEXCORP.COM  
DESCRIPTION  
4 SEC, 4 WIRE, REG EV ACTUATOR ASSY  
PART NUMBER  
EVR3300