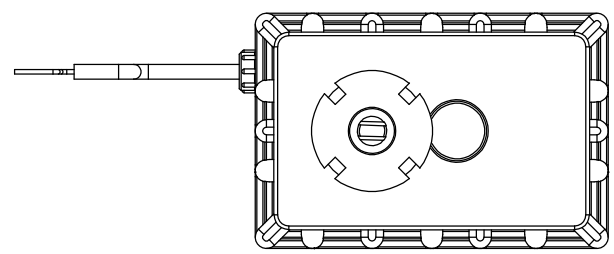
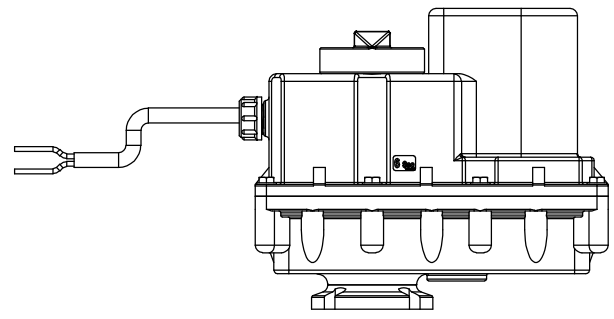
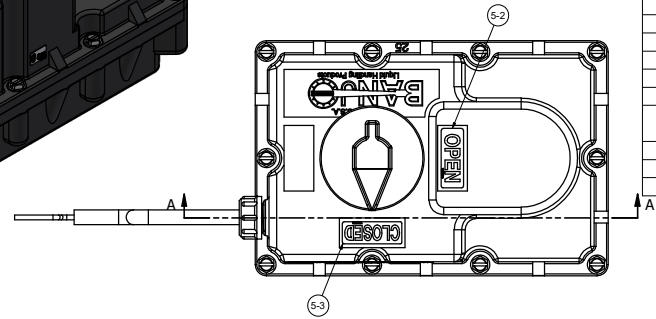
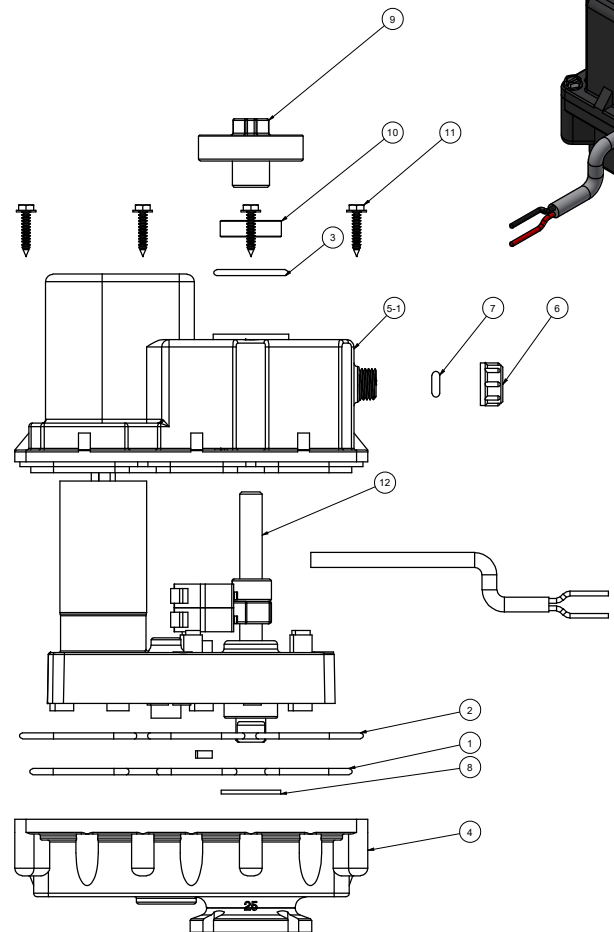
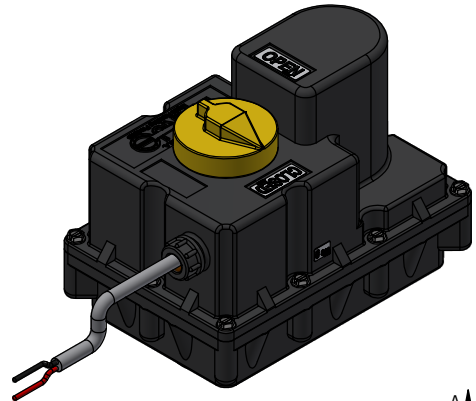
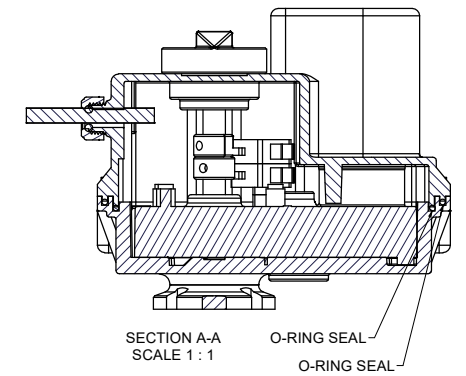


NOTE:

VALVE OPEN: +12V ON RED, -12V ON BLACK
 VALVE CLOSE: -12V ON RED, +12V ON BLACK



Parts List				
ITEM	QTY	PART NUMBER	DESCRIPTION	
1	1	A161	2-161 O-ring, EPDM	
2	1	A162	2-162 O-ring EPDM	
3	1	F10E	AS568A -121 O-RING, EPDM, BLACK	
4	1	MEV25101B	EV ACTUATOR HOUSING BOTTOM, LARGE MOTOR	
5	1	MEV25102D	EV HOUSING TOP, LG MTR, 1/4" THD	
5-1	1	MEV25102DX	Electric Valve Actuator Top, Large Motor, 1/4" Cable seal	
5-2	1	VEL1004	VE "OPEN" Sticker	
5-3	1	VEL1005	VE "CLOSED" Sticker	
6	1	MVE002	Heyco Threaded Bushing	
7	1	MVE005	AS568A -201 O-RING, FKM, BROWN	
8	1	MVE107	VE Motor Gasket w/ 1/2" Hole	
9	1	VE107B	EV Indicator	
10	1	VE109E	VE BOX Shaft Seal - EPDM	
11	10	VE15220	#6x3/4"18-8SS HWH SMS	
12	1	VE49892	6 Sec, 2 WIRE HIGH TORQUE, On/Off VE Motor	
13	1	VEL1009	VE Regulating 2 Wire Sticker (NS)	
14	1	VEL1013	VE "6 SEC" Decal	
15	1	VEL1023	EV INDICATOR DECAL (N/S)	



THIS DRAWING AND ALL INFORMATION CONTAINED THEREON ARE THE EXCLUSIVE PROPERTY OF BANJO CORPORATION.

BANJO CORPORATION
 150 BANJO DRIVE, CRAWFORDSVILLE, IN 47933
 WEB SITE: WWW.BANJOCORP.COM
 E-MAIL: BANJO.SALES@IDEXCORP.COM

UNLESS SPECIFICALLY NOTED, THIS DRAWING AND ITEMS SHOWN ON THIS DRAWING ARE SUBJECT TO CHANGE AT ANY TIME.

DESCRIPTION
6 SEC, 2W EV HIGH TORQUE ACTUATOR ASSEMBLY
 PART NUMBER
EVR4302