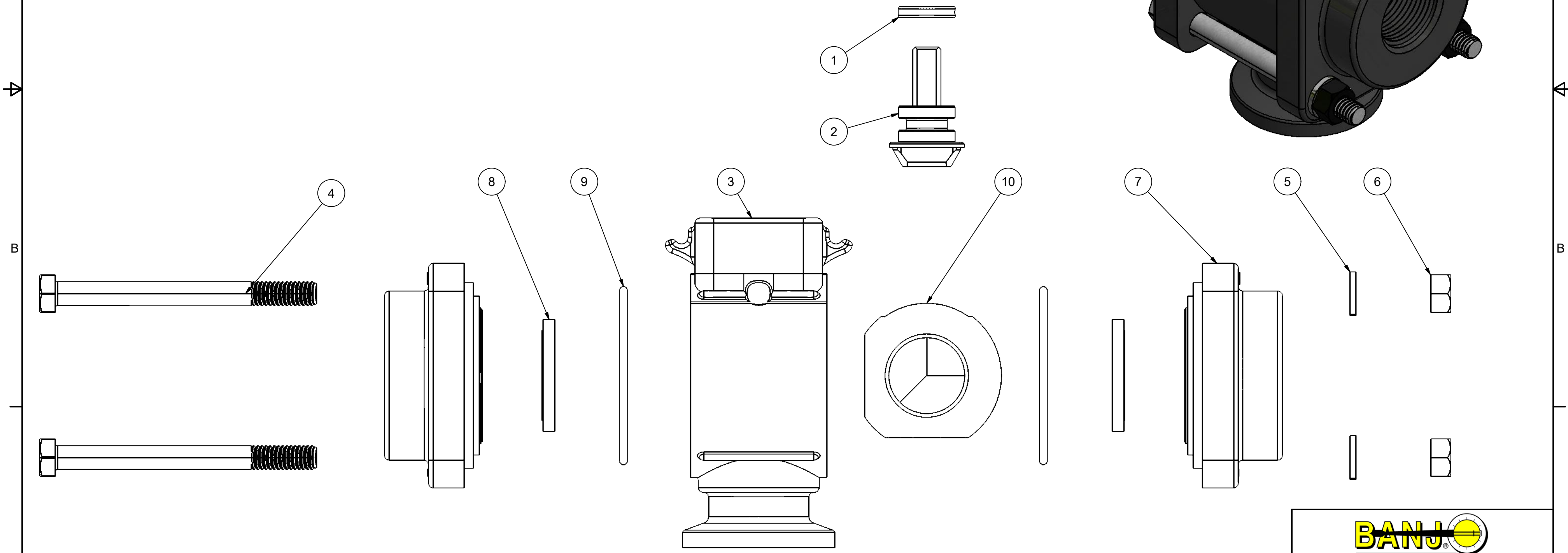
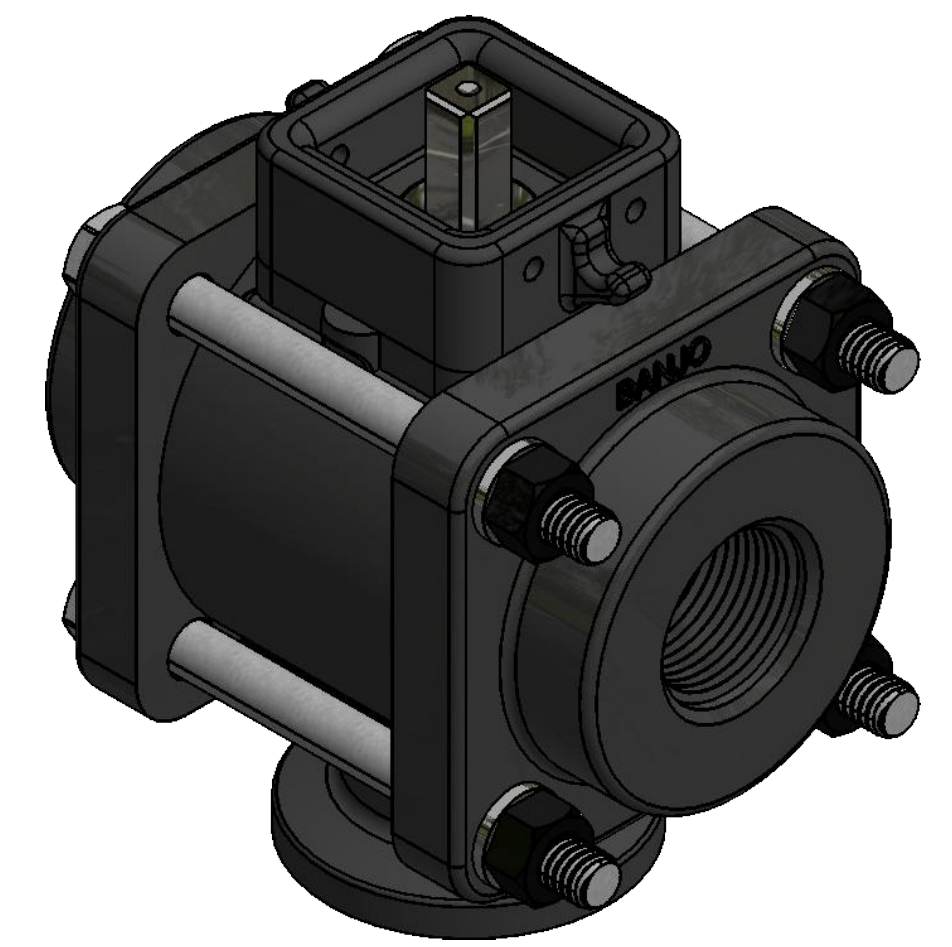


Parts List			
ITEM	QTY	PART NUMBER	DESCRIPTION
1	1	AQ206V	#206 QUAD RING, FKM
2	1	EVP20151A	EVX VALVE SS STEM 1-2"SP BOLTED
3	1	MEVX10354AB	1" FP BL MANIFOLD STYLE EVX BODY
4	4	V10117	5/16 - 18 X 3 1/2" HHCS
5	4	V10118	5/16" LOCKWASHER
6	4	V10119	5/16" HEX NUT
7	2	VE07357A	3/4" EV ENDPLATE, MACHINED
8	2	VE10258A	1" VE Seat TFM
9	2	VE10264	#139 O-RING, FKM
10	1	VE10355	1" FP VE 3-Way SS Ball



Assembly specs:  
 Body Bolt Tightening Torque: 75 in-lb.  
 Max Stem Turning Torque: 50 in-lb.

THIS DRAWING AND ALL INFORMATION CONTAINED THEREON ARE THE EXCLUSIVE PROPERTY OF BANJO CORPORATION.  
 UNLESS SPECIFICALLY NOTED, THIS DRAWING AND ITEMS SHOWN ON THIS DRAWING ARE SUBJECT TO CHANGE AT ANY TIME.

**BANJO CORPORATION**  
 150 BANJO DRIVE, CRAWFORDSVILLE, IN 47933  
 WEB SITE: WWW.BANJOCORP.COM  
 E-MAIL: BANJOSALES@IDEXCORP.COM

DESCRIPTION  
 EVX 3/4" NPT BL BOLTED VALVE ONLY

PART NUMBER  
 EVX075BLX