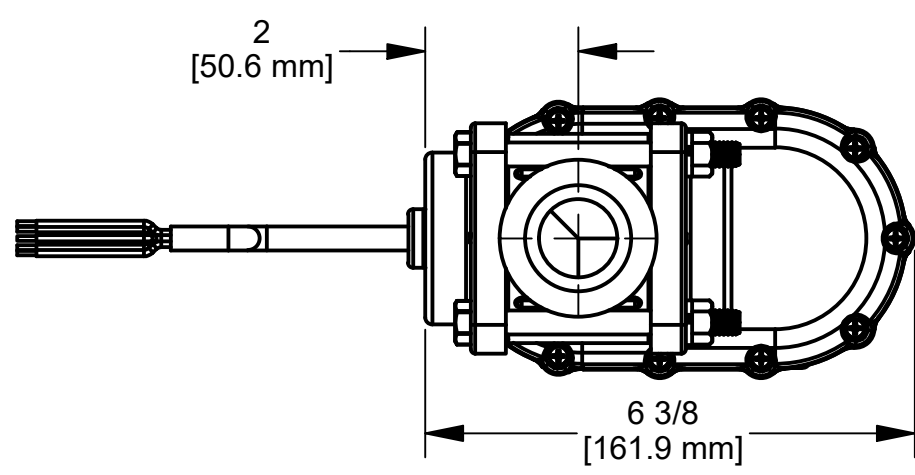
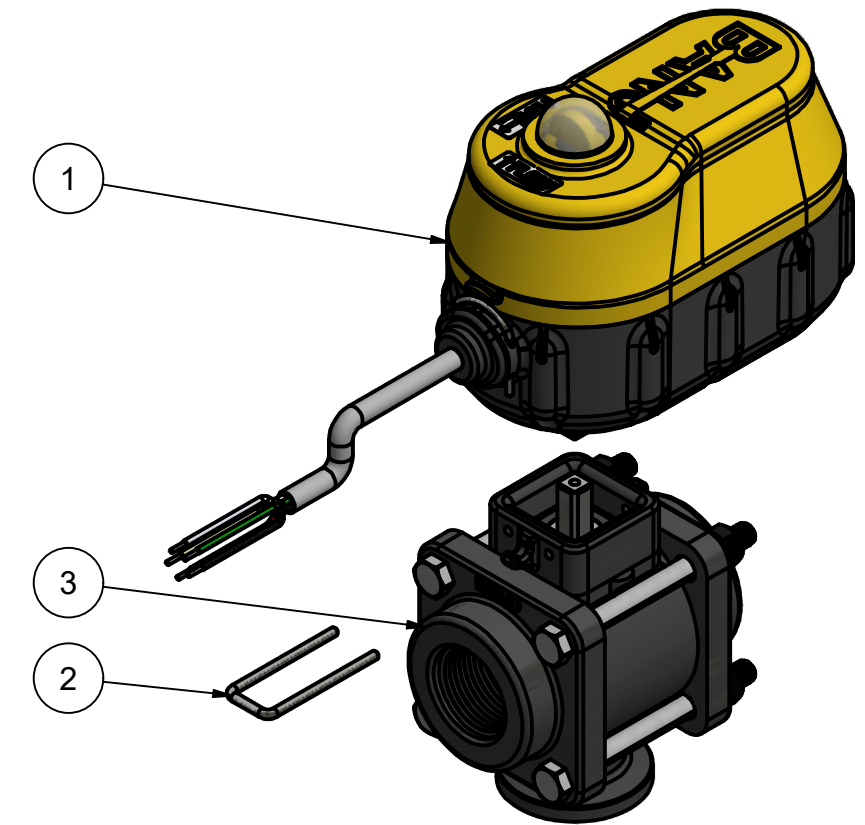
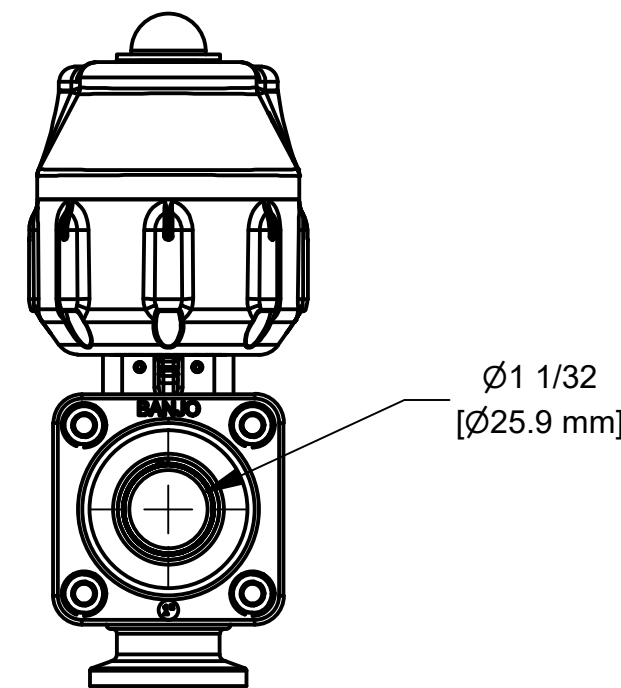
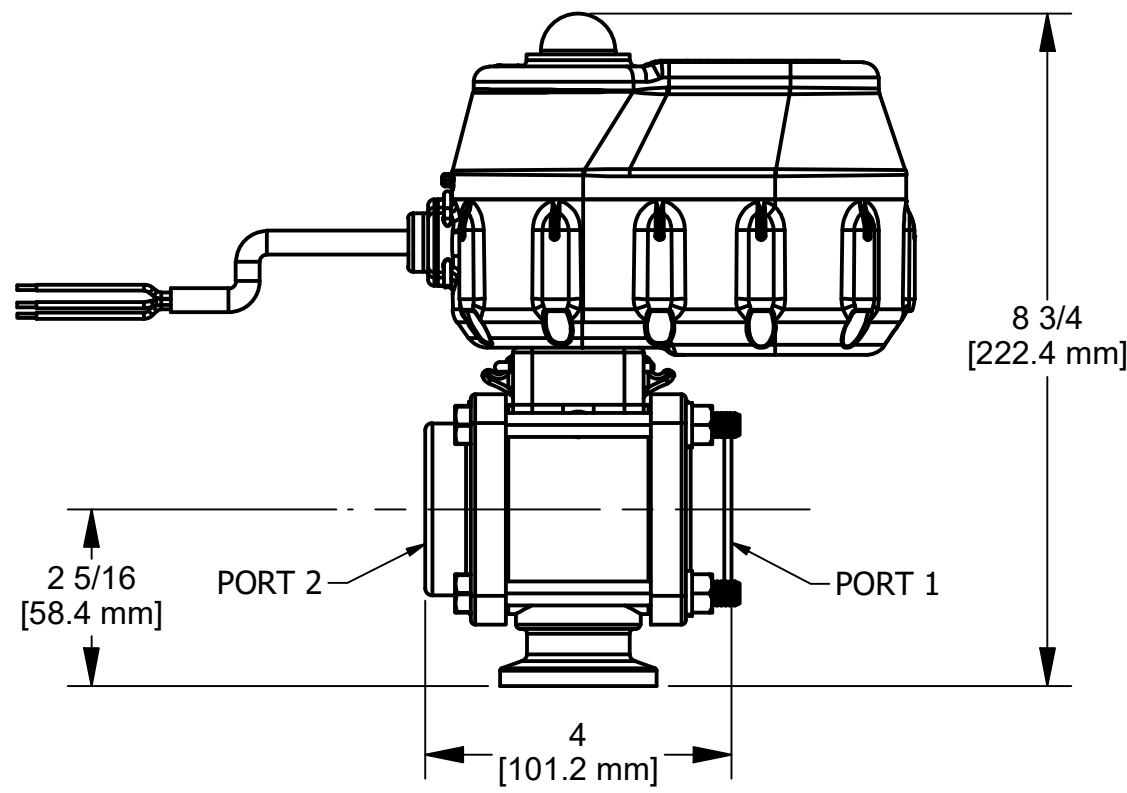


**WIRING:**  
 RED = +24VDC  
 BLACK = GND  
 WHITE = +12VDC (OPEN @ PORT 1), 0VDC (OPEN @ PORT 2)  
 GREEN = +24VDC FEEDBACK (OPEN)  
 BROWN = +24VDC FEEDBACK (CLOSED)

WIRE LENGTH: 18" ± 1" FROM HOUSING

PARTS LIST			
ITEM	QTY	PART NUMBER	DESCRIPTION
1	1	EP22A10523	EVX ACT 0.75S WWC 5W 24V OP/CL-VFY
2	1	EVP20001	EV U-PIN
3	1	EVX100BLX	EVX 1" NPT BL BOLTED VALVE ONLY



THIS DRAWING AND ALL INFORMATION CONTAINED THEREON ARE THE EXCLUSIVE PROPERTY OF BANJO CORPORATION.  
  
 UNLESS SPECIFICALLY NOTED, THIS DRAWING AND ITEMS SHOWN ON THIS DRAWING ARE SUBJECT TO CHANGE AT ANY TIME.

  
**BANJO CORPORATION**  
 150 BANJO DRIVE, CRAWFORDSVILLE, IN 47933  
 WEB SITE: WWW.BANJOCORP.COM  
 E-MAIL: BANJOSALES@IDEXCORP.COM

DESCRIPTION  
 EVX 1"NPT BL 0.75S WWC 5W 24V  
 OPEN/CLOSE VERIFY

PART NUMBER  
 EVX100BL24F3