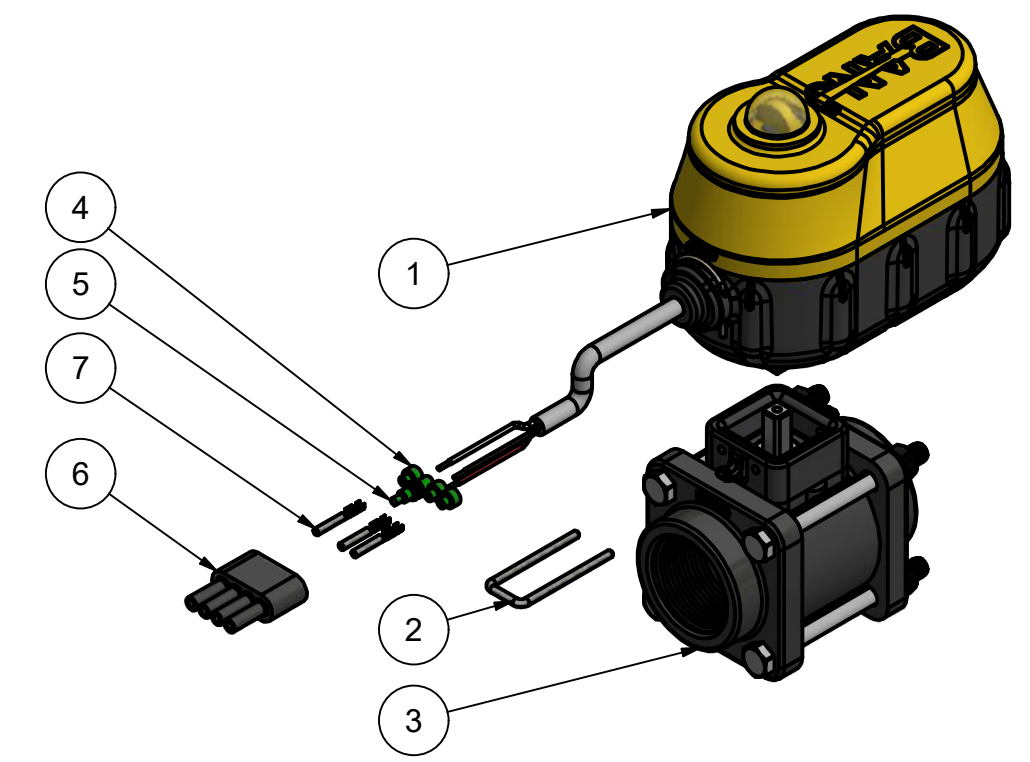


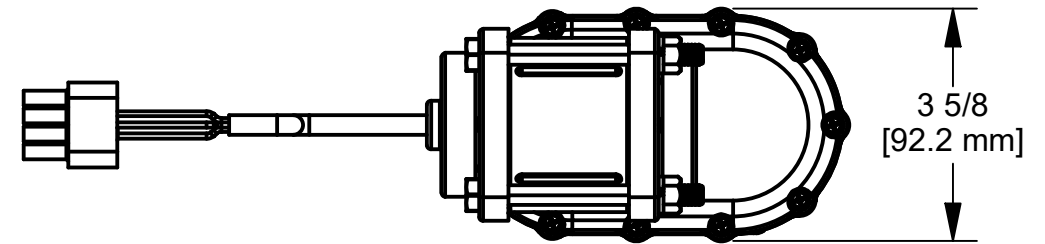
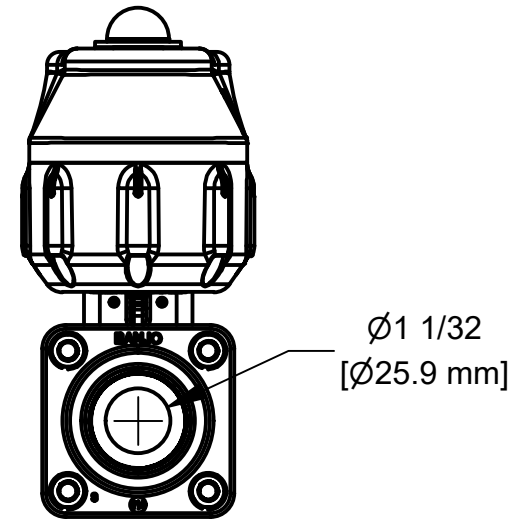
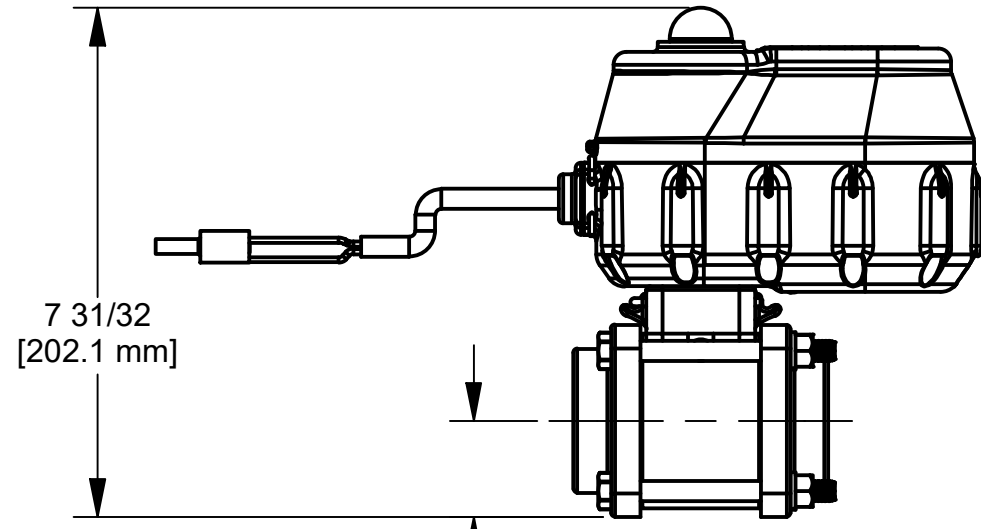
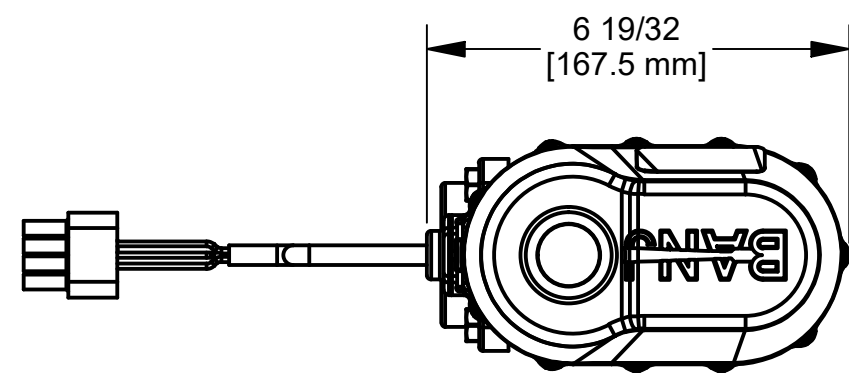
PARTS LIST			
ITEM	QTY	PART NUMBER	DESCRIPTION
1	1	EP21A10310	EVX ACT 0.75S WWC 3W
2	1	EVP20001	EV U-PIN
3	1	EVX121X	EVX 1 1/4" NPT 2 WAY BOLTED VALVE ONLY
4	3	VE001	CABLE SEAL
5	1	VE005	CAVITY PLUG
6	1	VE006	4 TOWER MALE TOWER
7	3	VE010	FEMALE TERMINAL

*TO PURCHASE ACTUATOR ONLY WITH CONNECTOR:
PART NUMBER IS: **EP21A10310C8**



WIRING:
 PIN A: BLACK = GND
 PIN B: PLUG
 PIN C: WHITE = +12VDC (OPEN), 0VDC (CLOSE)
 PIN D: RED = +12VDC

WIRE LENGTH: 18" ± 1"



THIS DRAWING AND ALL INFORMATION CONTAINED THEREON ARE THE EXCLUSIVE PROPERTY OF BANJO CORPORATION.

UNLESS SPECIFICALLY NOTED, THIS DRAWING AND ITEMS SHOWN ON THIS DRAWING ARE SUBJECT TO CHANGE AT ANY TIME.

BANJO CORPORATION

BANJO CORPORATION
 150 BANJO DRIVE, CRAWFORDSVILLE, IN 47933
 WEB SITE: WWW.BANJOCORP.COM
 E-MAIL: BANJOSALES@IDEXCORP.COM

DESCRIPTION
 EVX 1.25"SP NPT 0.75S WWC ABBPCWDR

PART NUMBER
 EVX121B