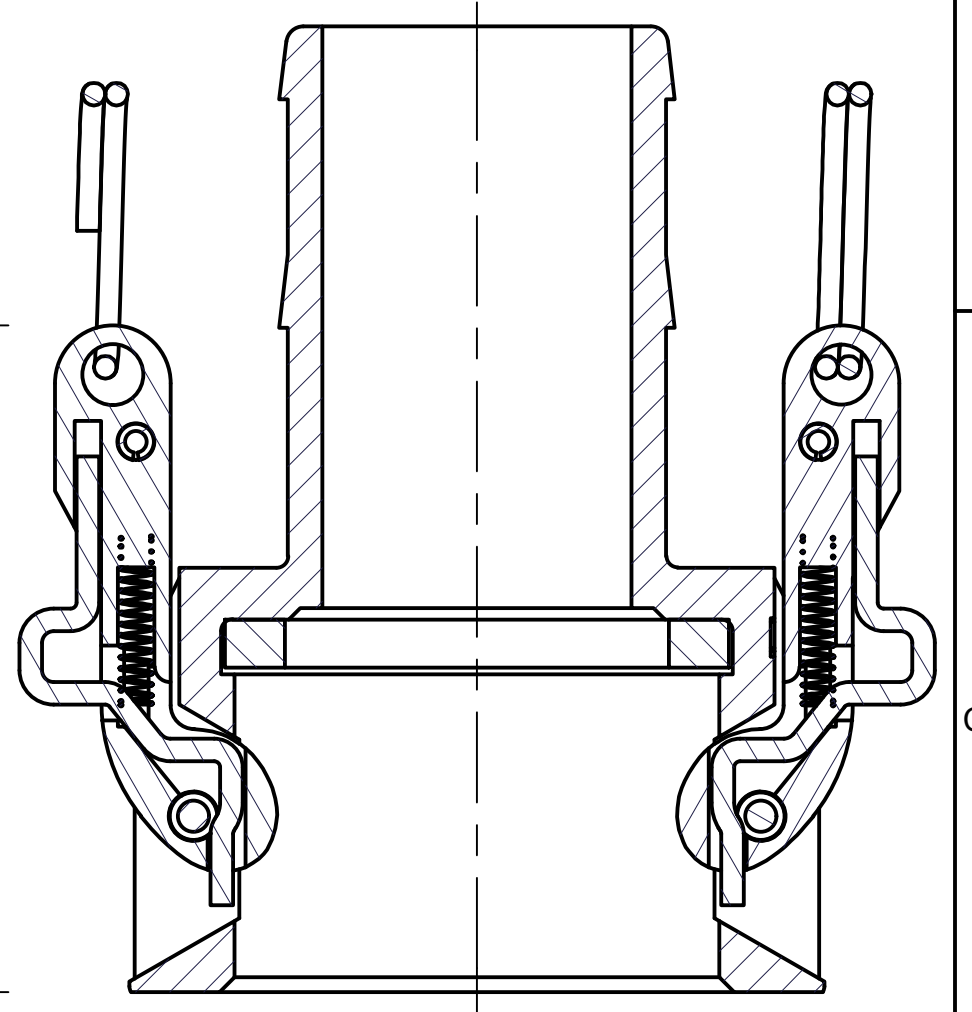
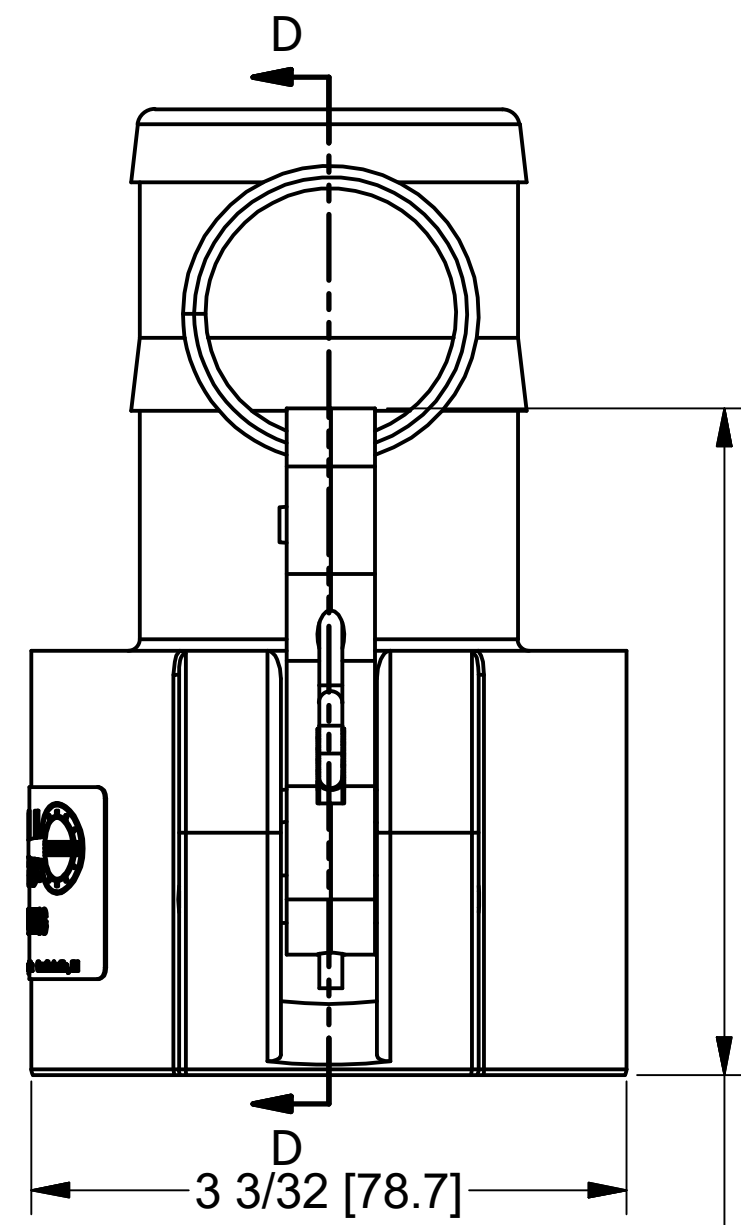
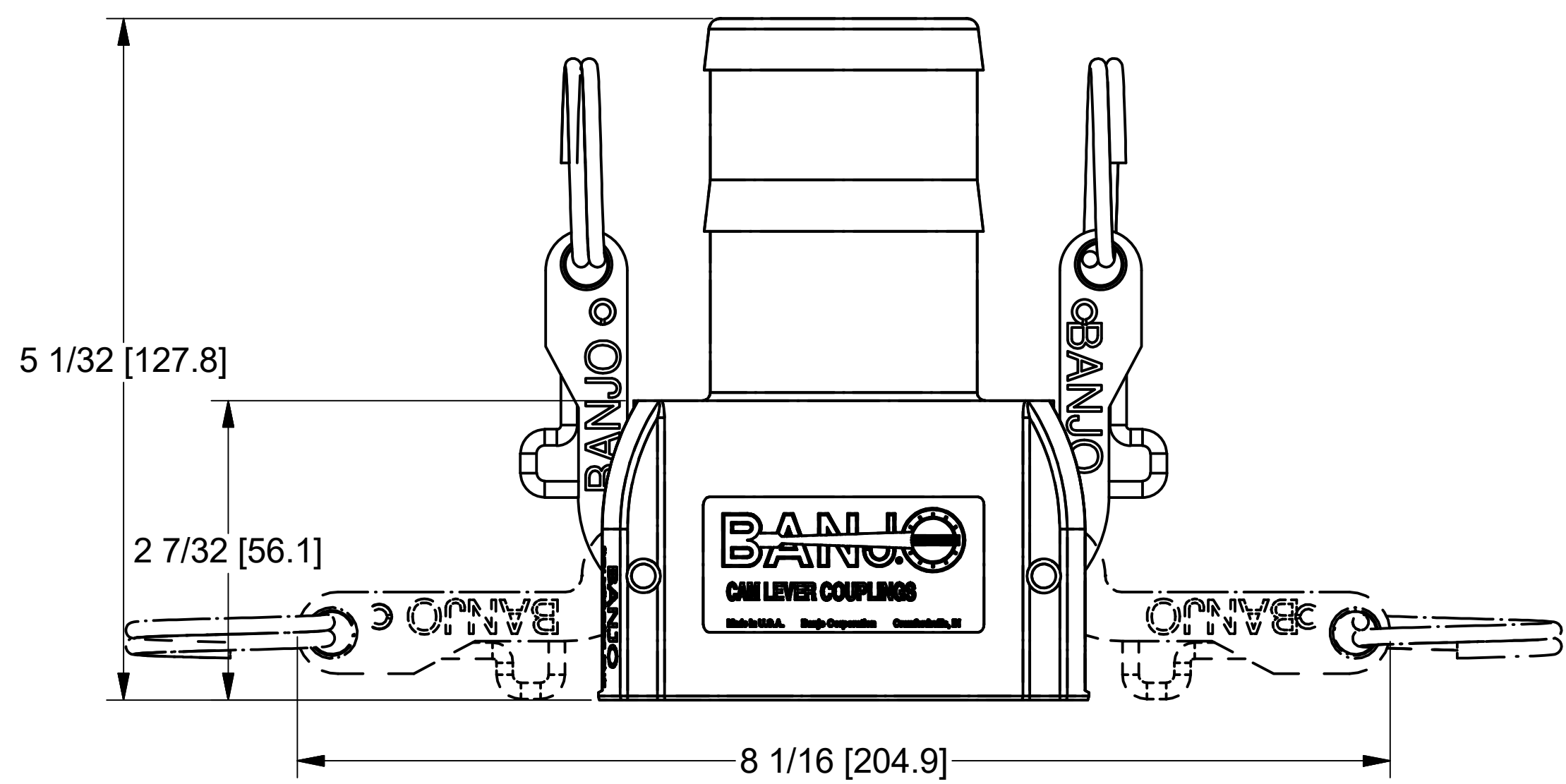
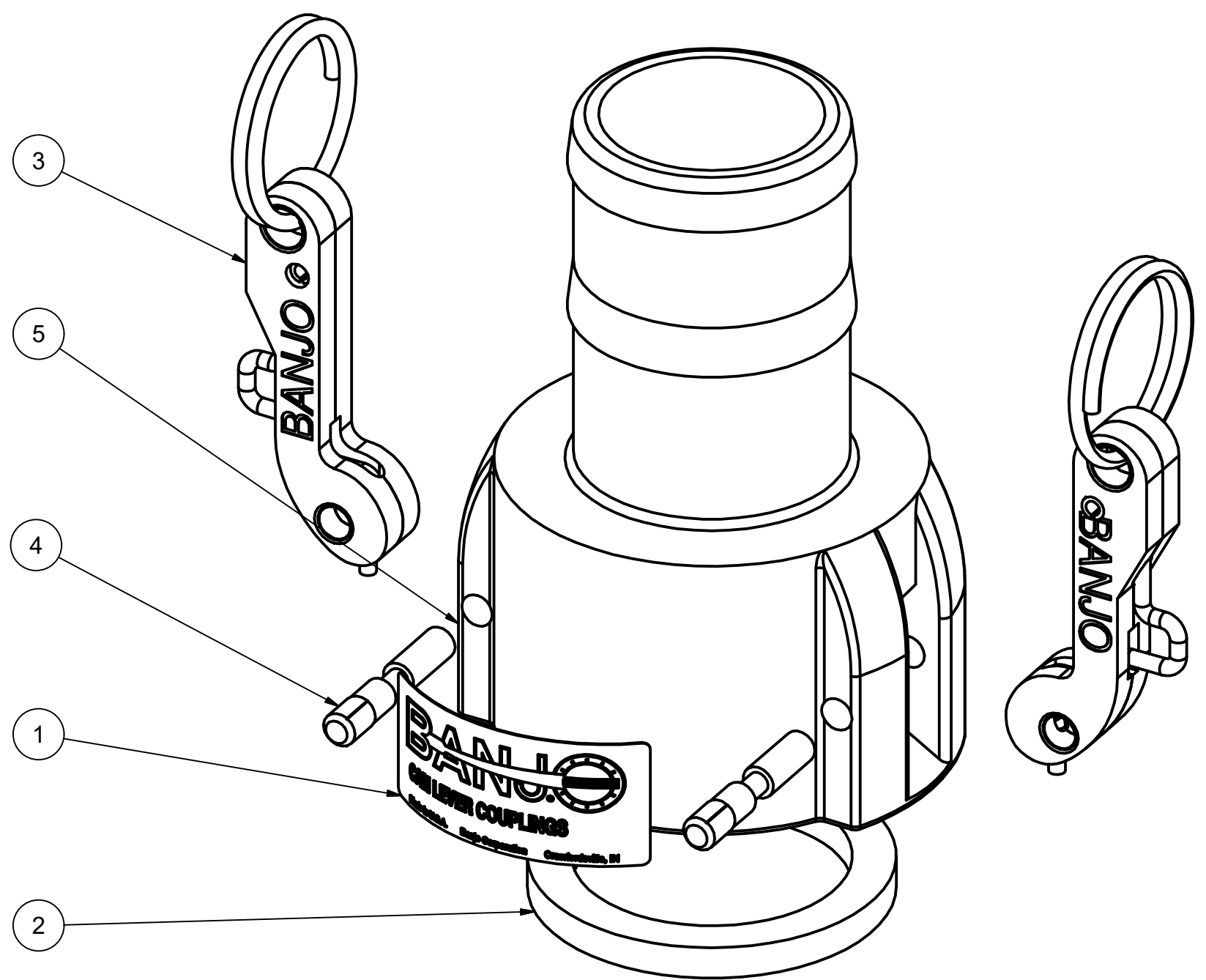


Parts List			
ITEM	QTY	PART NUMBER	DESCRIPTION
1	1	150(200)D	CAM LEVER COUPLING DECAL
2	1	200G	2" Coupling Gasket
3	2	200KL	2" Locking Cam Arm
4	2	200PKL	CAM ARM PIN
5	1	200XMC	2" FML CPLG X 2" HOSEBARB



SECTION D-D  
SCALE 1 : 1

3 15/32 [88.2]



**BANJO CORPORATION**  
 150 BANJO DRIVE, CRAWFORDSVILLE, IN 47933  
 WEB SITE: WWW.BANJOCORP.COM  
 E-MAIL: SALES1@BANJOCORP.COM

THIS DRAWING AND ALL INFORMATION CONTAINED THEREON ARE THE EXCLUSIVE PROPERTY OF BANJO CORPORATION.

UNLESS SPECIFICALLY NOTED, THIS DRAWING AND ITEMS SHOWN ON THIS DRAWING ARE SUBJECT TO CHANGE AT ANY TIME.

DESCRIPTION  
**2" Female Coupler X 2" HB W/ Locking Cam Arms**

PART NUMBER  
**L200C**