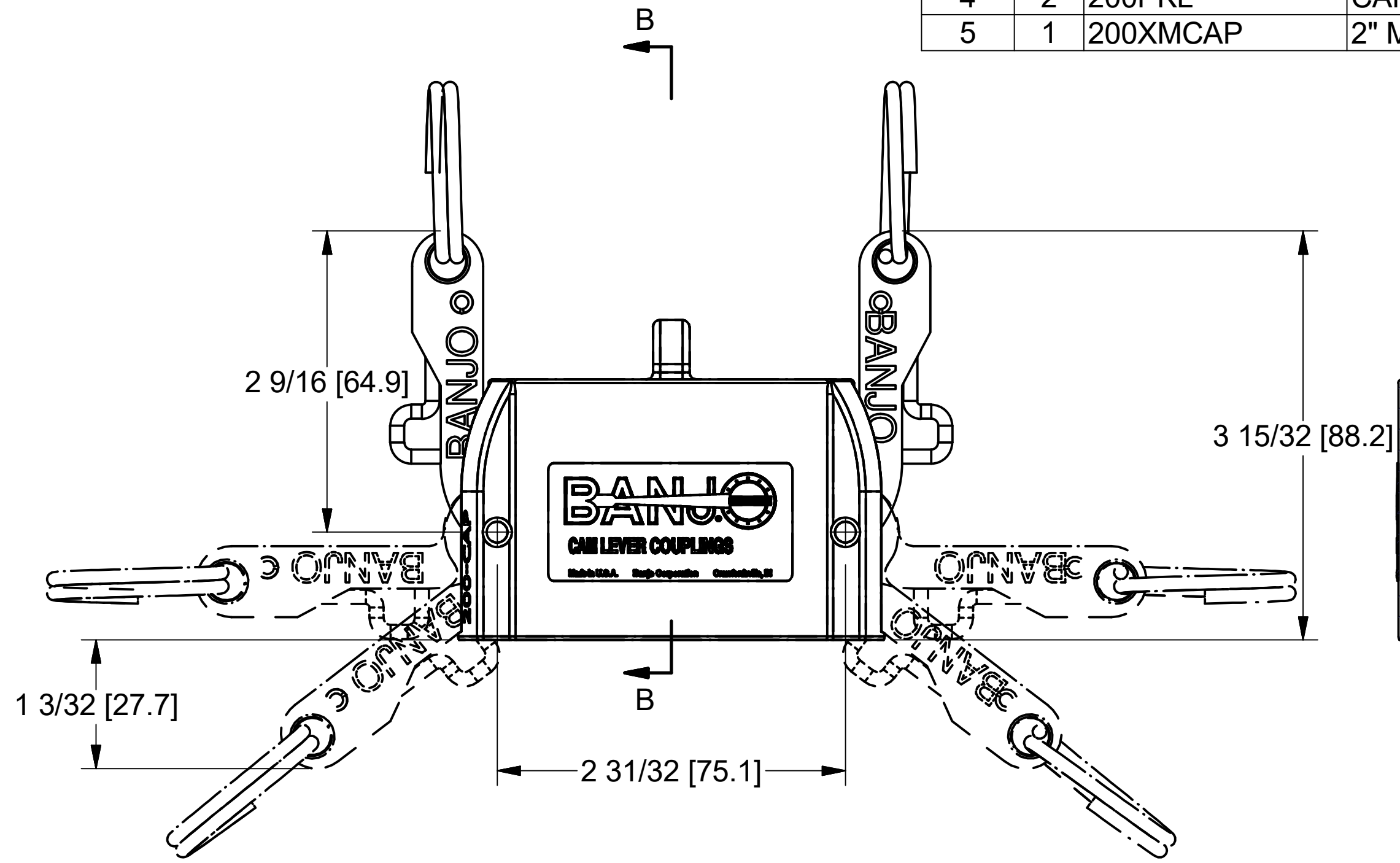
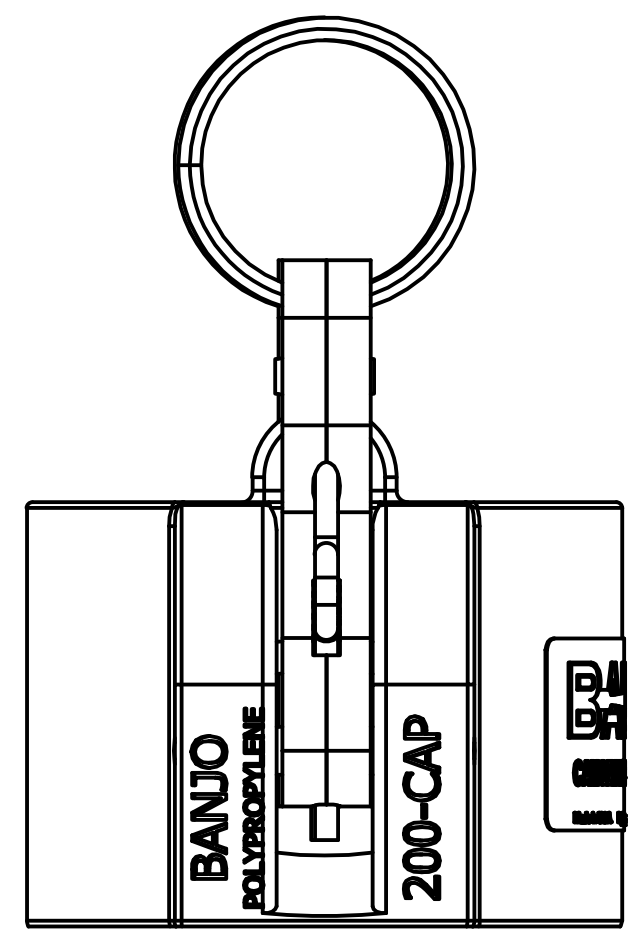
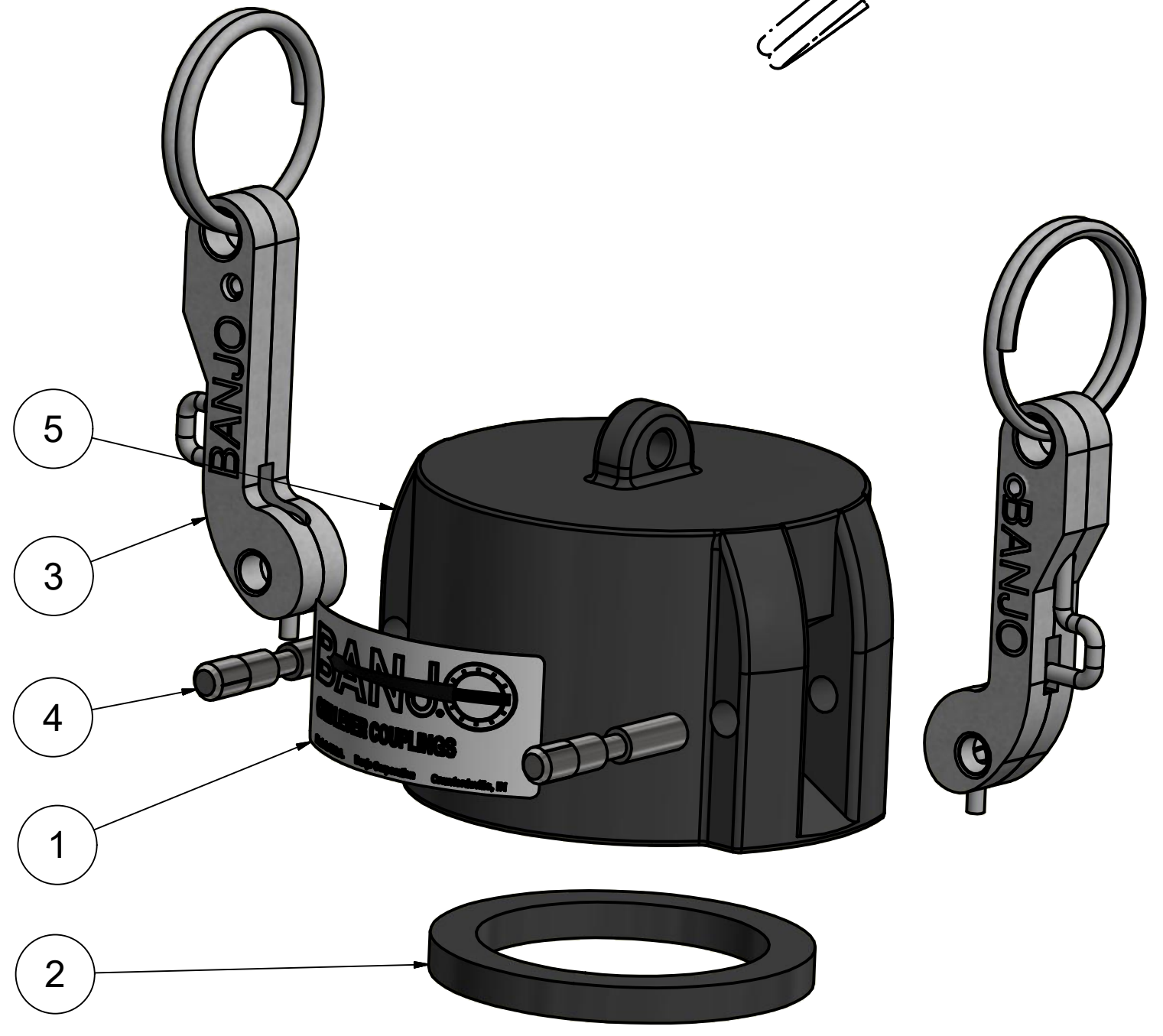


Parts List			
ITEM	QTY	PART NUMBER	DESCRIPTION
1	1	150(200)D	CAM LEVER COUPLING DECAL
2	1	200G	2" Coupling Gasket
3	2	200KL	2" Locking Cam Arm
4	2	200PKL	CAM ARM PIN
5	1	200XMCAP	2" MACHINED CAP



NOTE:
OPEN ARM DISTANCE: 8"



THIS DRAWING AND ALL INFORMATION CONTAINED THEREON ARE THE EXCLUSIVE PROPERTY OF BANJO CORPORATION.

UNLESS SPECIFICALLY NOTED, THIS DRAWING AND ITEMS SHOWN ON THIS DRAWING ARE SUBJECT TO CHANGE AT ANY TIME.



BANJO CORPORATION
150 BANJO DRIVE, CRAWFORDSVILLE, IN 47933
WEB SITE: WWW.BANJOCORP.COM
E-MAIL: SALES1@BANJOCORP.COM

DESCRIPTION
2" Cap W/ Locking Cam Arms

PART NUMBER
L200CAP