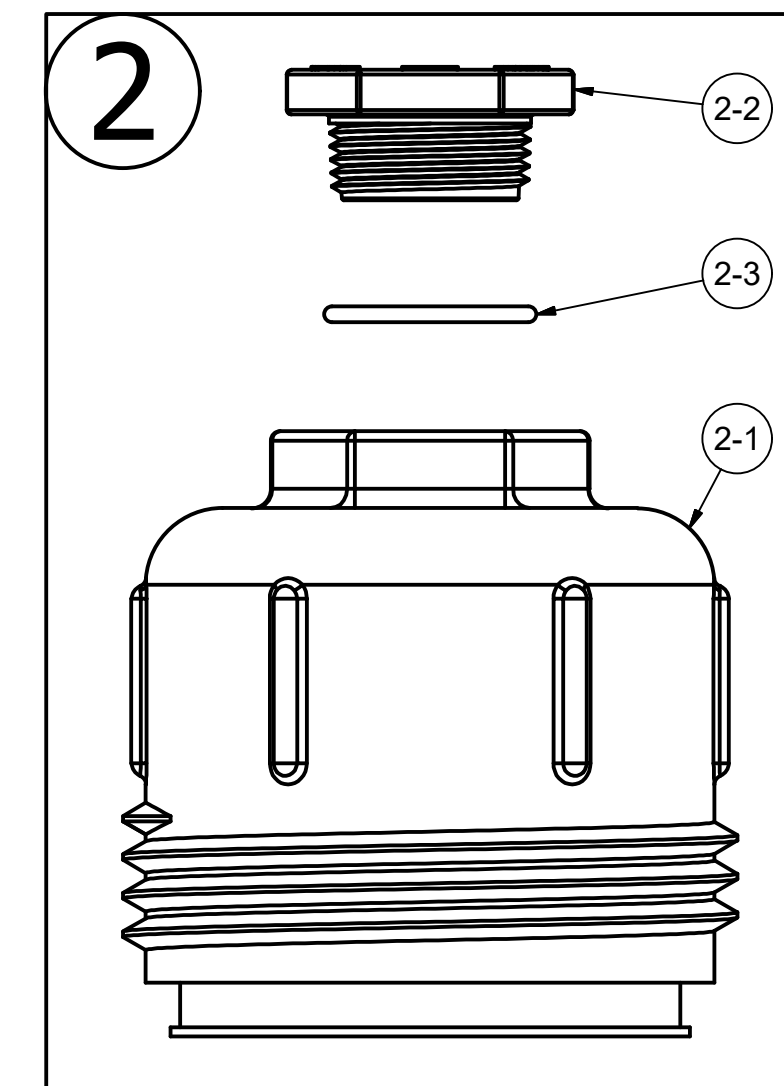
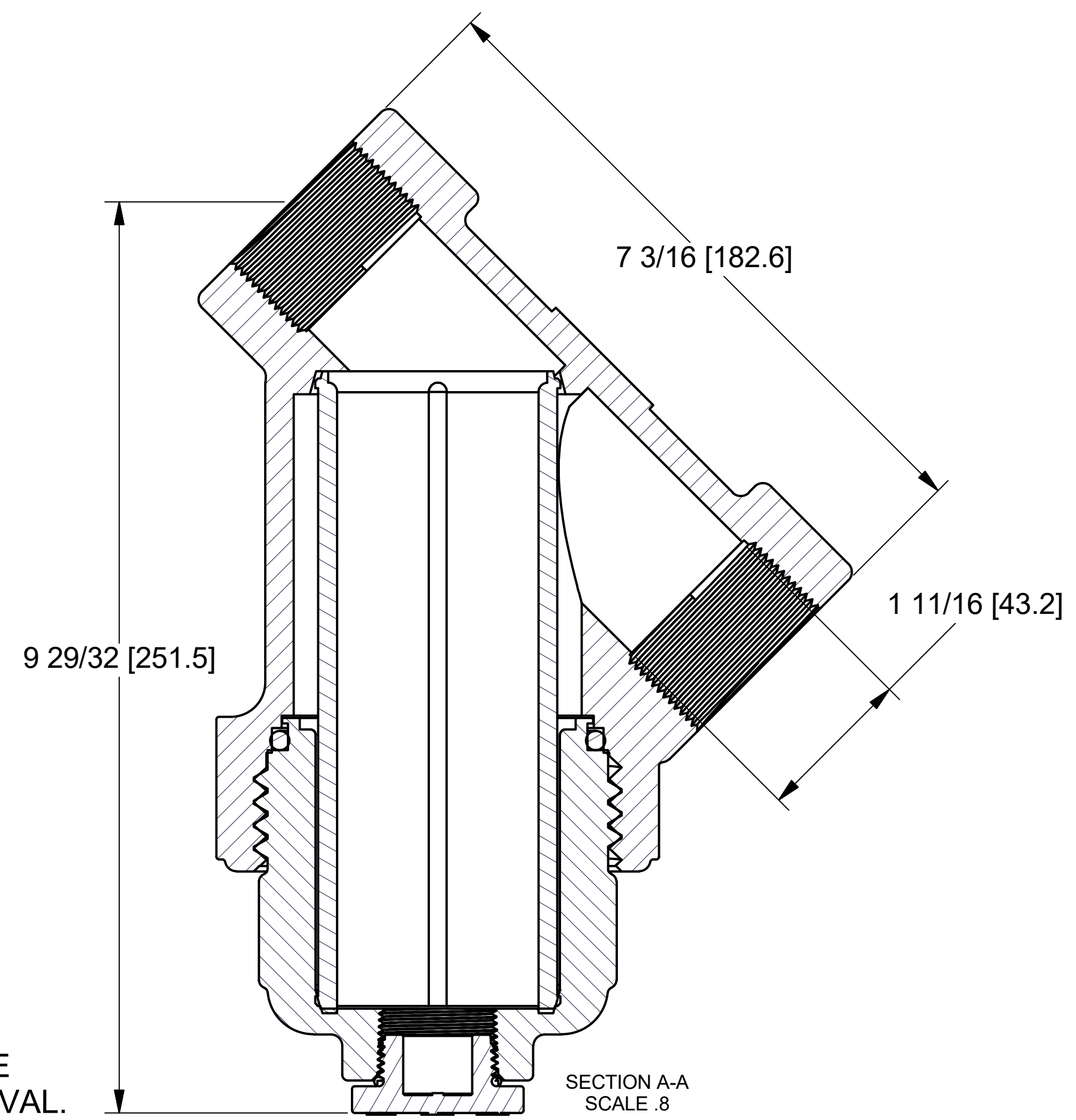
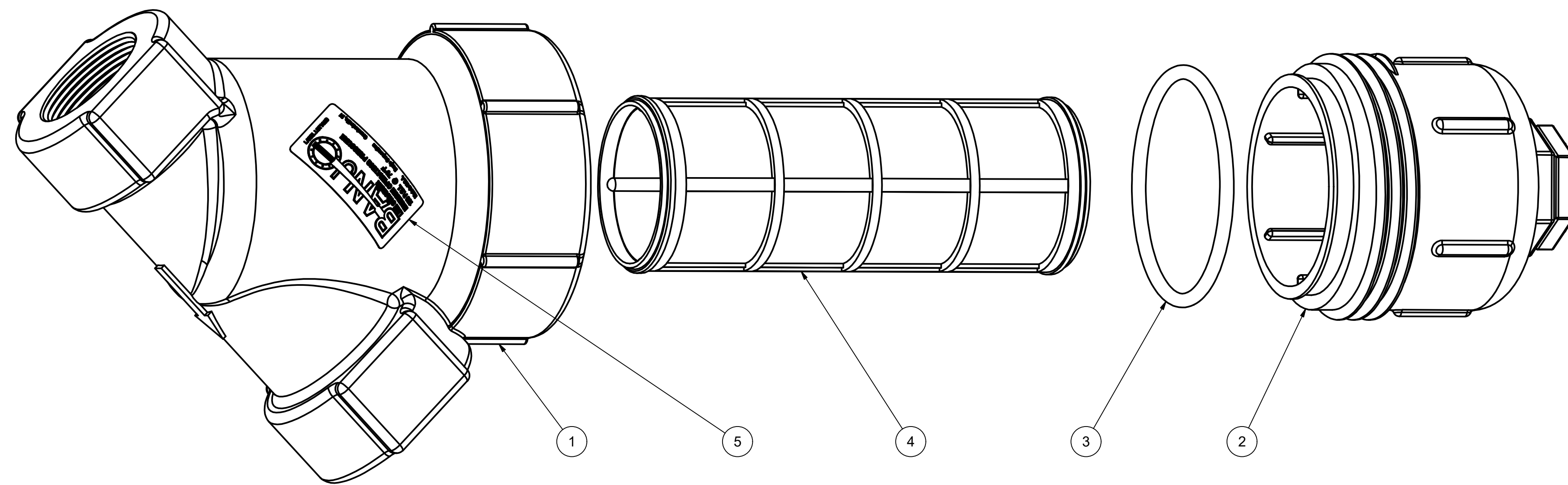
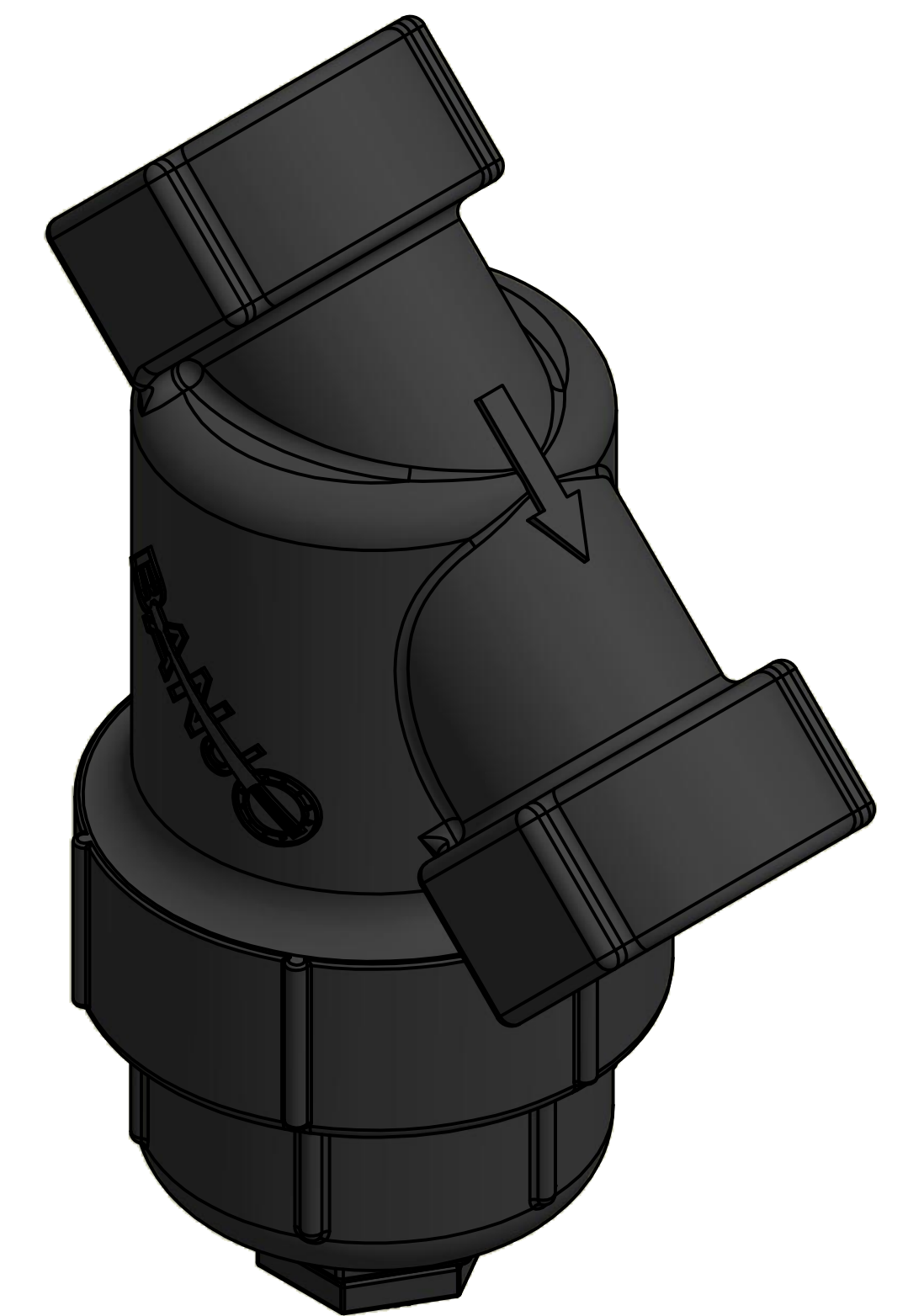


*NOTE:
7" ADDITIONAL CLEARANCE
REQ'D FOR SCREEN REMOVAL.



Parts List			
ITEM	QTY	PART NUMBER	DESCRIPTION
1	1	LS150-B	1 1/2" LINE STRAINER BODY
2	1	LS150-C	LS CAP ASSY
2-1	1	LS150XC	1 1/2" & 2" LS CAP
2-2	1	LSQ200-PL	LINE STRAINER PLUG
2-3	1	LSQ200-R	2-123 EPDM O-Ring
3	1	LS150-G	#339 O-RING
4	1	LS206	2" LS SCREEN - 6 MESH
5	1	LST100-D	Decal for LST150



THIS DRAWING AND ALL INFORMATION CONTAINED THEREON ARE THE EXCLUSIVE PROPERTY OF BANJO CORPORATION.

UNLESS SPECIFICALLY NOTED, THIS DRAWING AND ITEMS SHOWN ON THIS DRAWING ARE SUBJECT TO CHANGE AT ANY TIME.

BANJO CORPORATION
150 BANJO DRIVE, CRAWFORDSVILLE, IN 47933
WEB SITE: WWW.BANJO.CORP.COM
E-MAIL: BANJOSALES@IDEXCORP.COM

DESCRIPTION
1 1/2" LINE STRAINERW/ #6 MESH

PART NUMBER
LS150-06