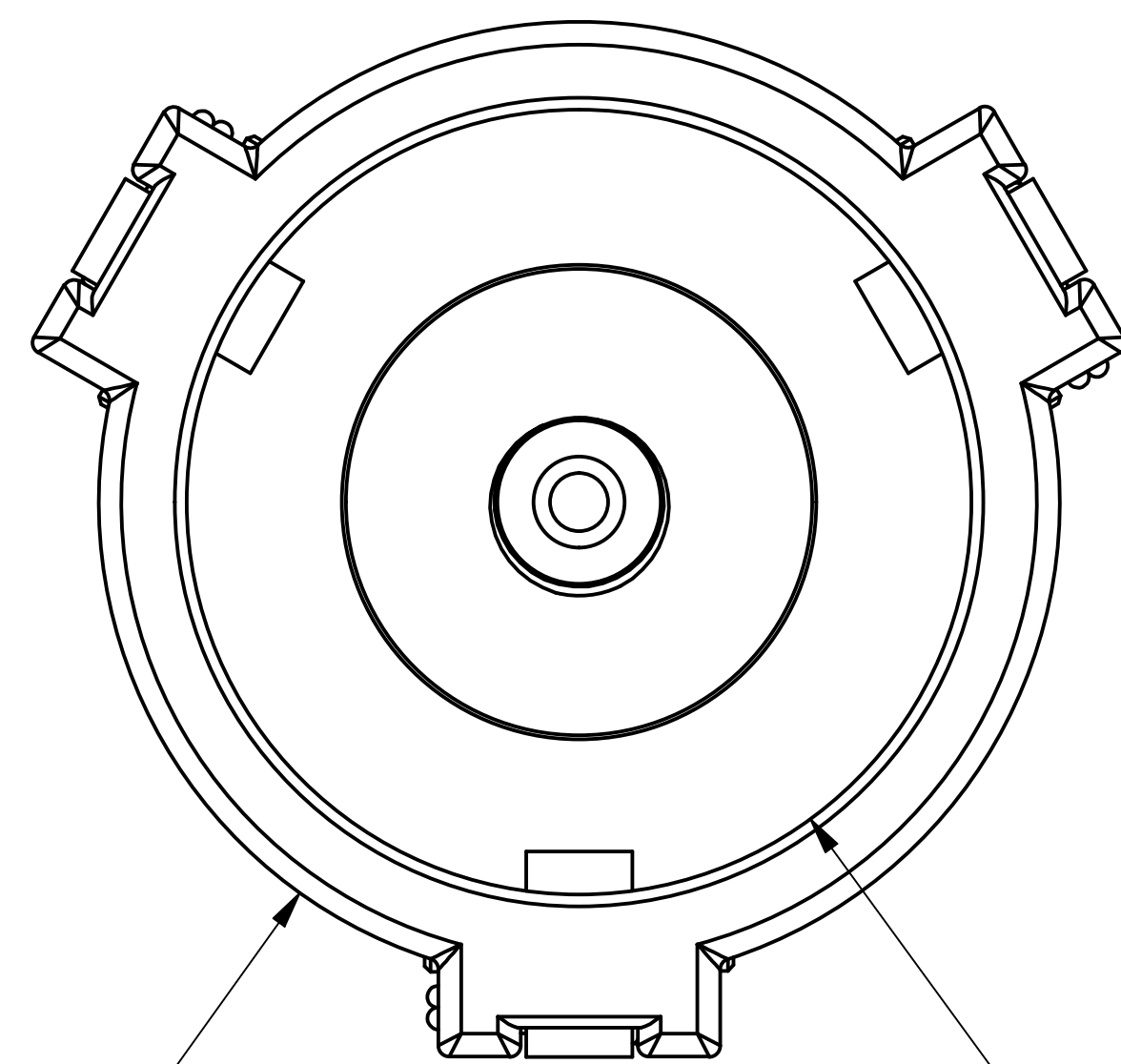
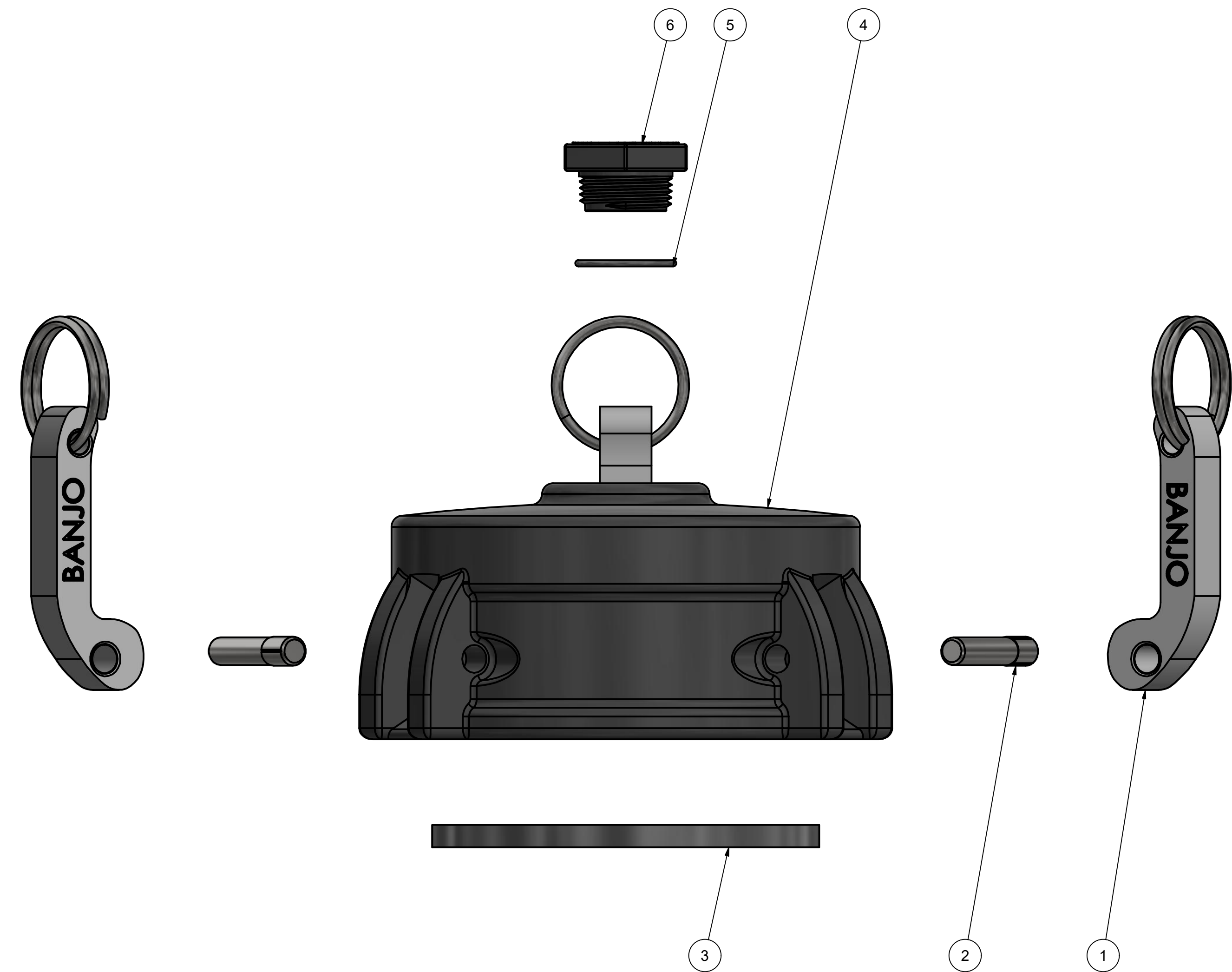
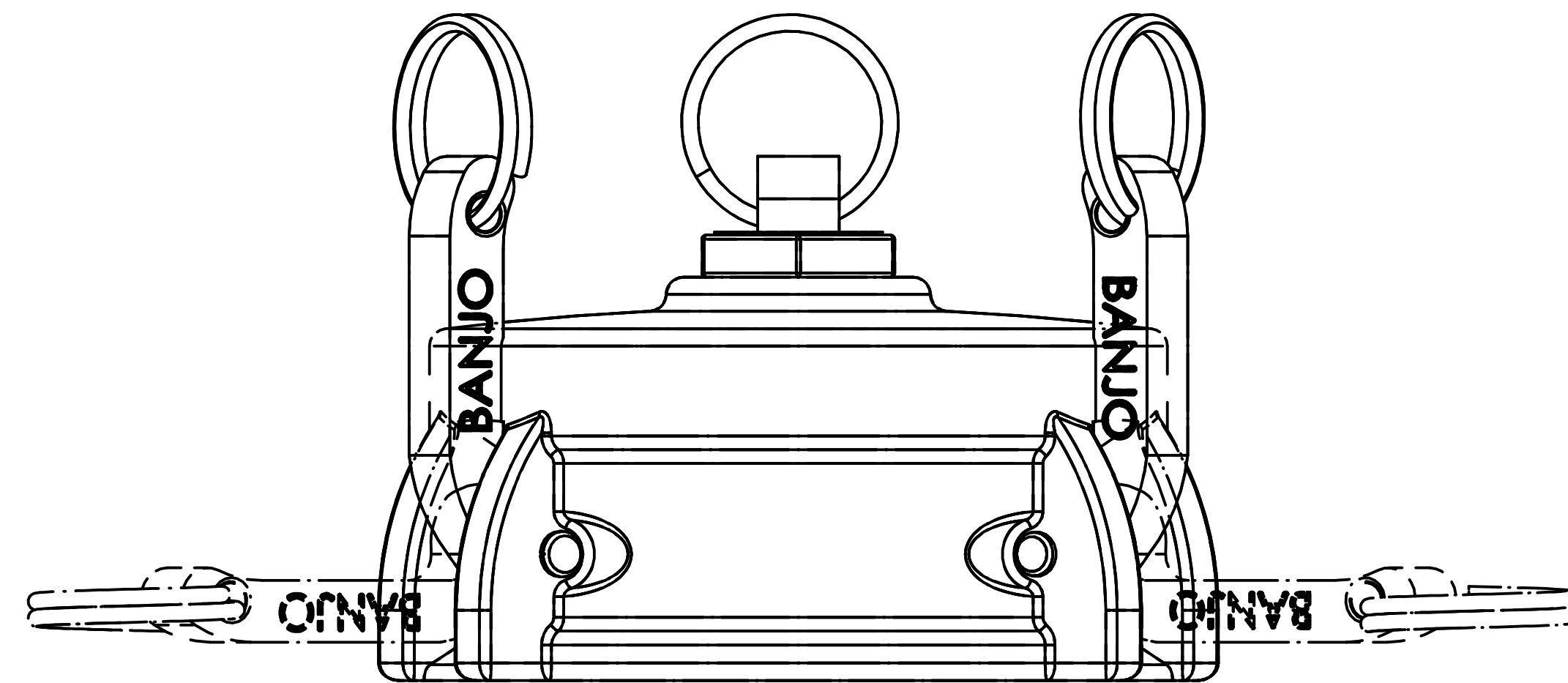


PARTS LIST			
ITEM	QTY	PART NUMBER	DESCRIPTION
1	3	300K	CAM ARM
2	3	300P	CAM ARM PIN
3	1	LSQ200-G	LSQ CAP GASKET
4	1	LSQ200-XC	LSQ LINE STRAINER CAP
5	1	LSQ200R1	AS568A -022 O-RING, EPDM, BLACK
6	1	PLUG075S	3/4" SHORT PIPE PLUG



Ø5 1/4  
[Ø133.4 mm]

Ø4 9/32  
[Ø108.8 mm]



THIS DRAWING AND ALL INFORMATION CONTAINED THEREON ARE THE EXCLUSIVE PROPERTY OF BANJO CORPORATION.

UNLESS SPECIFICALLY NOTED, THIS DRAWING AND ITEMS SHOWN ON THIS DRAWING ARE SUBJECT TO CHANGE AT ANY TIME.

BANJO CORPORATION  
150 BANJO DRIVE, CRAWFORDSVILLE, IN 47933  
WEB SITE: WWW.BANJO.CORP.COM  
E-MAIL: BANJOSALES@IDEXCORP.COM

DESCRIPTION  
**2" QUICK CPLG LINE STRAINER CAP**

PART NUMBER  
**LSQ200-C**