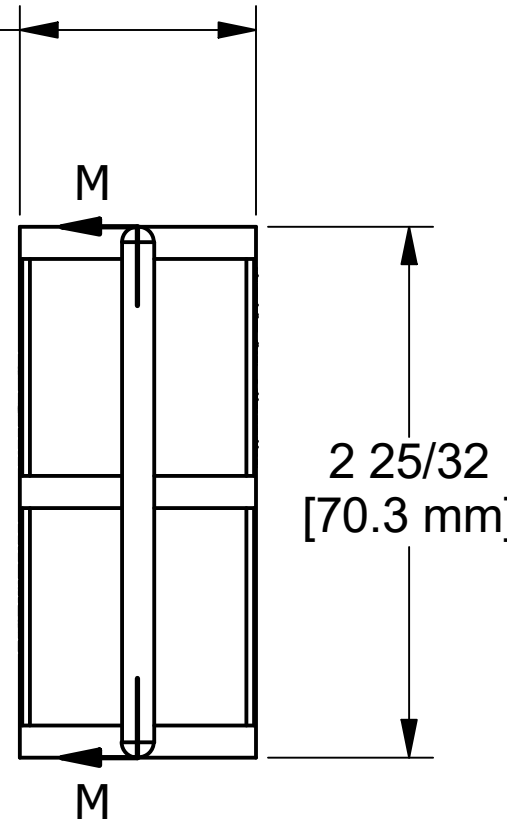
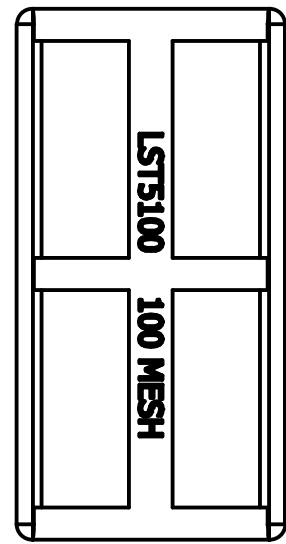
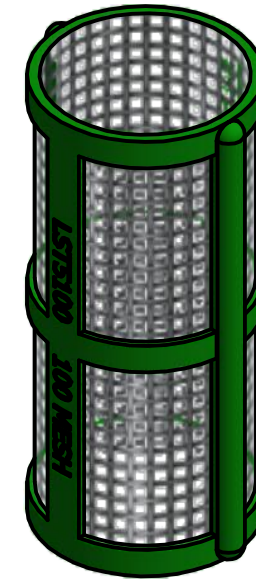
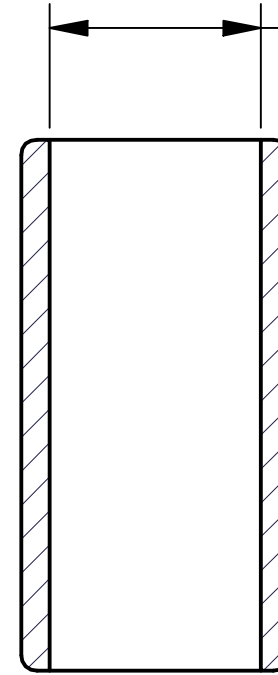


1 7/32  
[31.2 mm]



1 3/32  
[28.0 mm]



NOTE:

MATL: POLY RIBBED W/ 316SS SCREEN

PART NO.	MICRON	WIRE Ø	OPENING	RIB COLOR
LST530	595	0.012	0.021	FLAME RED ( RAL #3000)
LST550	297	0.009	0.011	GENTIAN BLUE ( RAL #5010)
LST580	177	0.0055	0.007	ZINC YELLOW( RAL #1018)
LST5100	149	0.004	0.005	TRAFFIC GREEN( RAL #6024)

THIS DRAWING AND ALL INFORMATION CONTAINED THEREON ARE THE EXCLUSIVE PROPERTY OF BANJO CORPORATION.

UNLESS SPECIFICALLY NOTED, THIS DRAWING AND ITEMS SHOWN ON THIS DRAWING ARE SUBJECT TO CHANGE AT ANY TIME.



**BANJO CORPORATION**  
150 BANJO DRIVE, CRAWFORDSVILLE, IN 47933  
WEB SITE: WWW.BANJOCORP.COM  
E-MAIL: BANJOSALES@IDEXCORP.COM

DESCRIPTION  
1/2" LST SCREEN - 100 MESH

PART NUMBER  
LST5100